

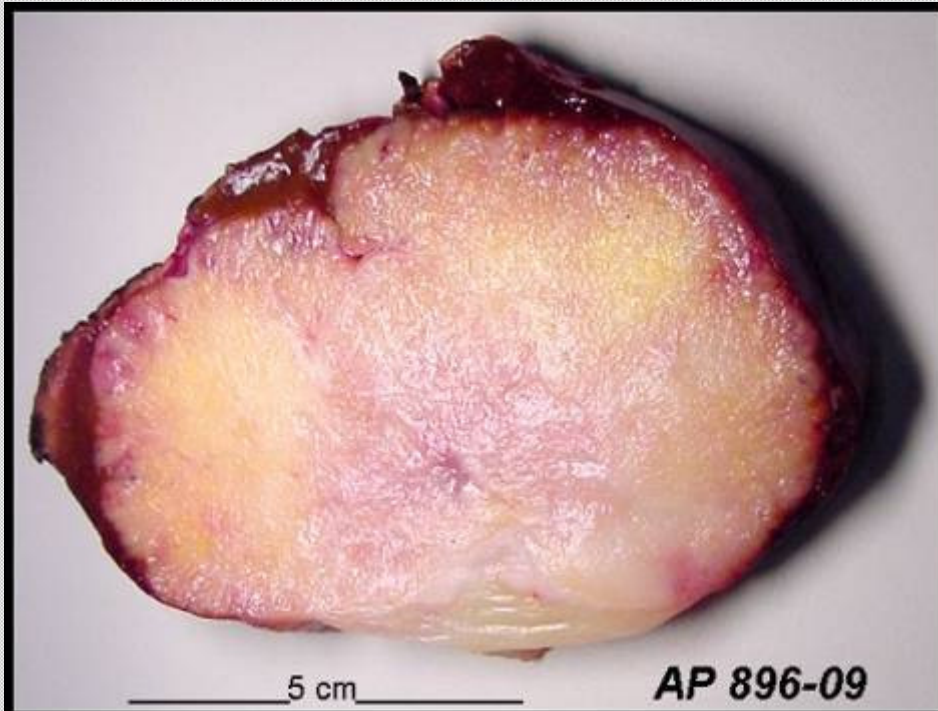
CASO DO MÊS

**SOCIEDADE BRASILEIRA
DE PATOLOGIA**

Celso Rubens Vieira e Silva

Dados Clínicos

- Tumor de fígado
- Mulher
- 45 anos



AP 896-09

10 X 9 X 6,5 cm

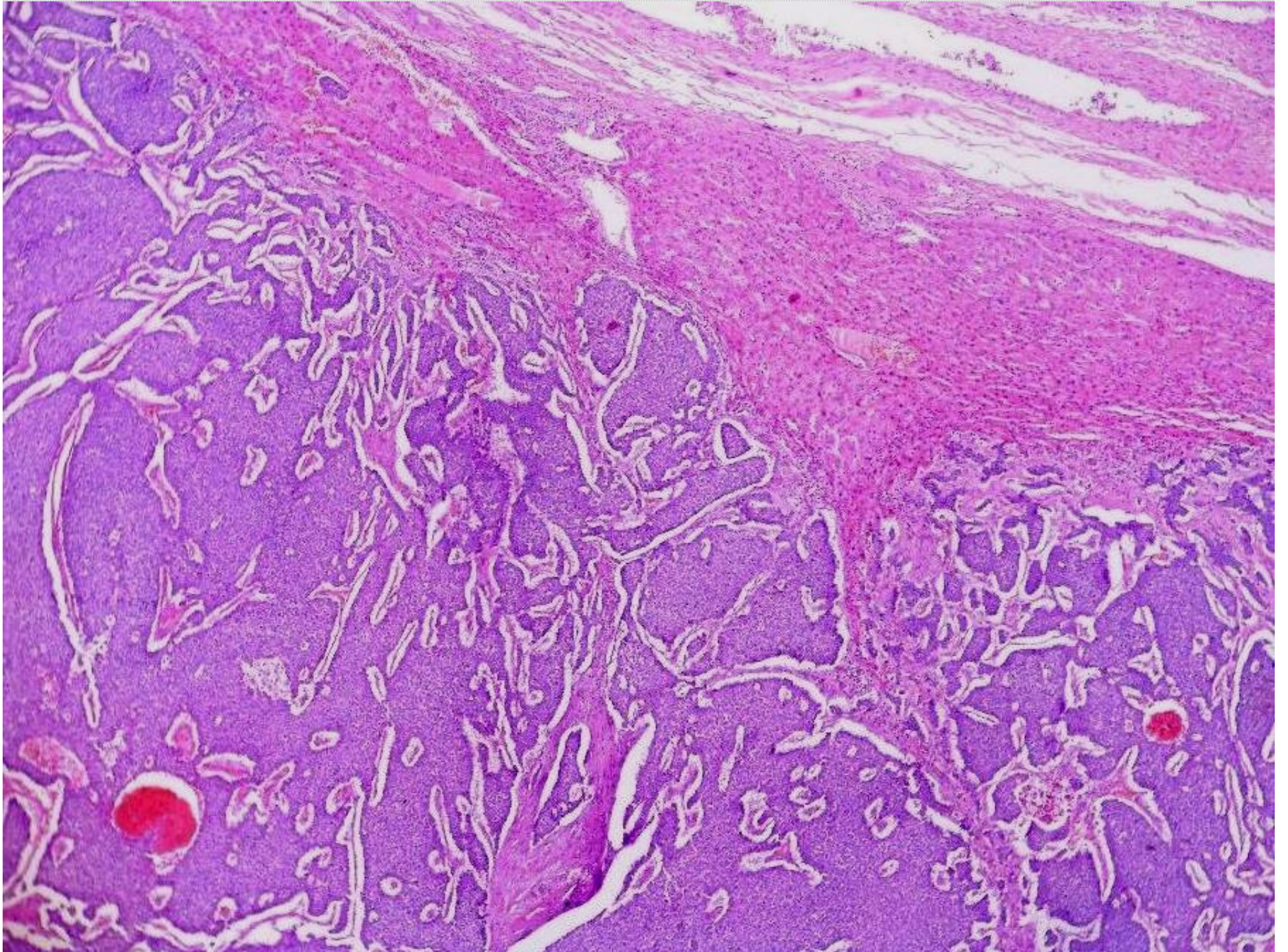
+ 17 linfonodos

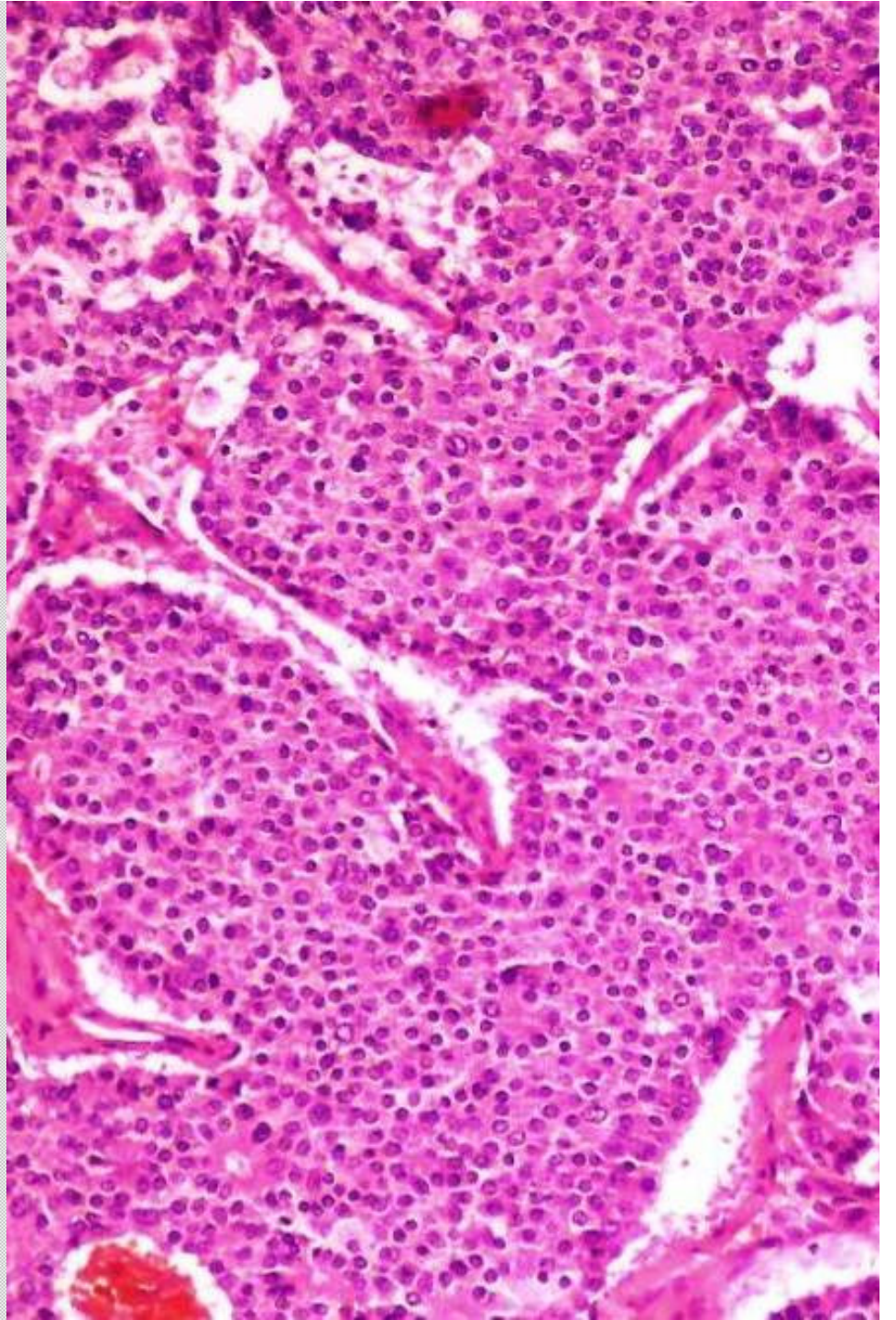
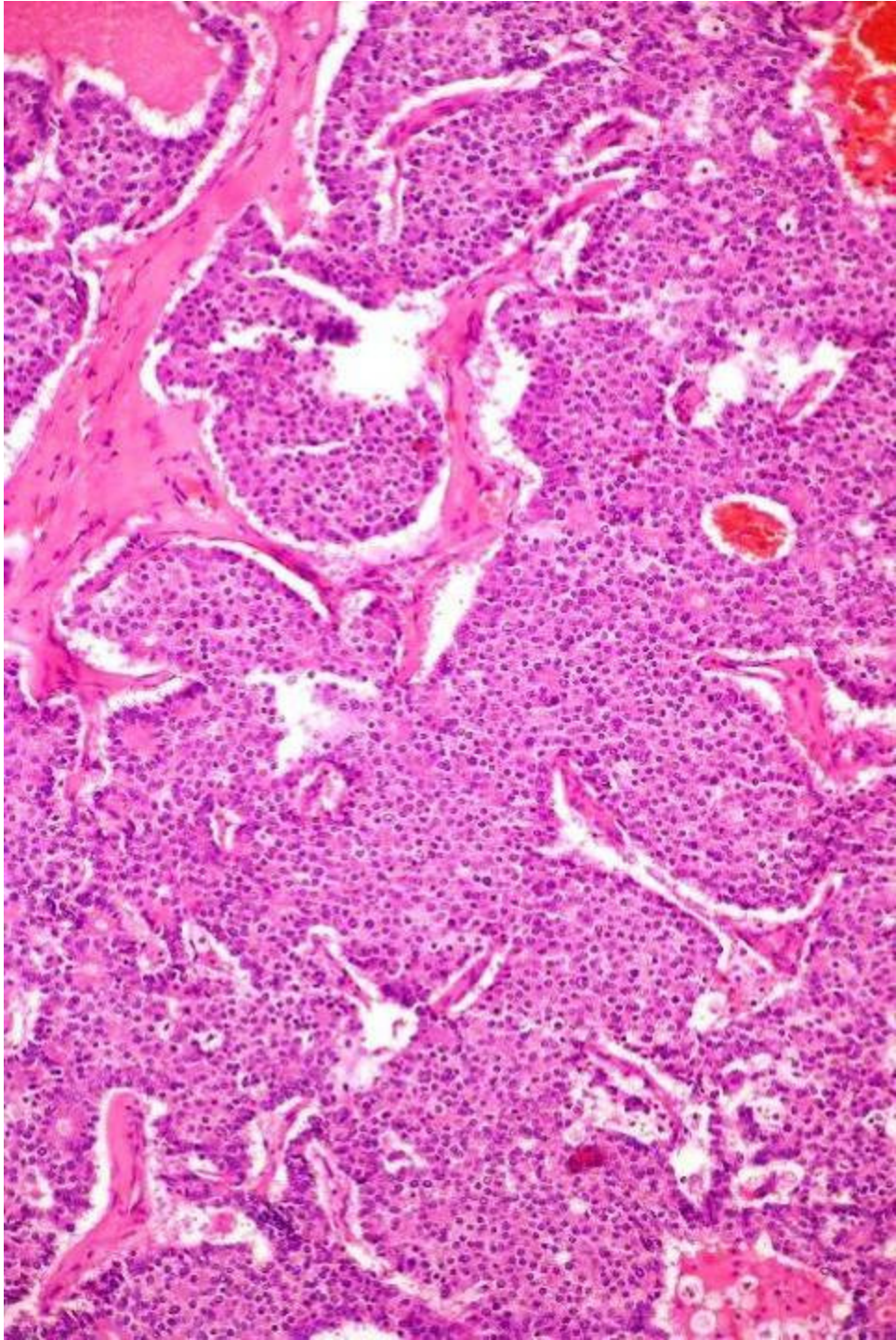


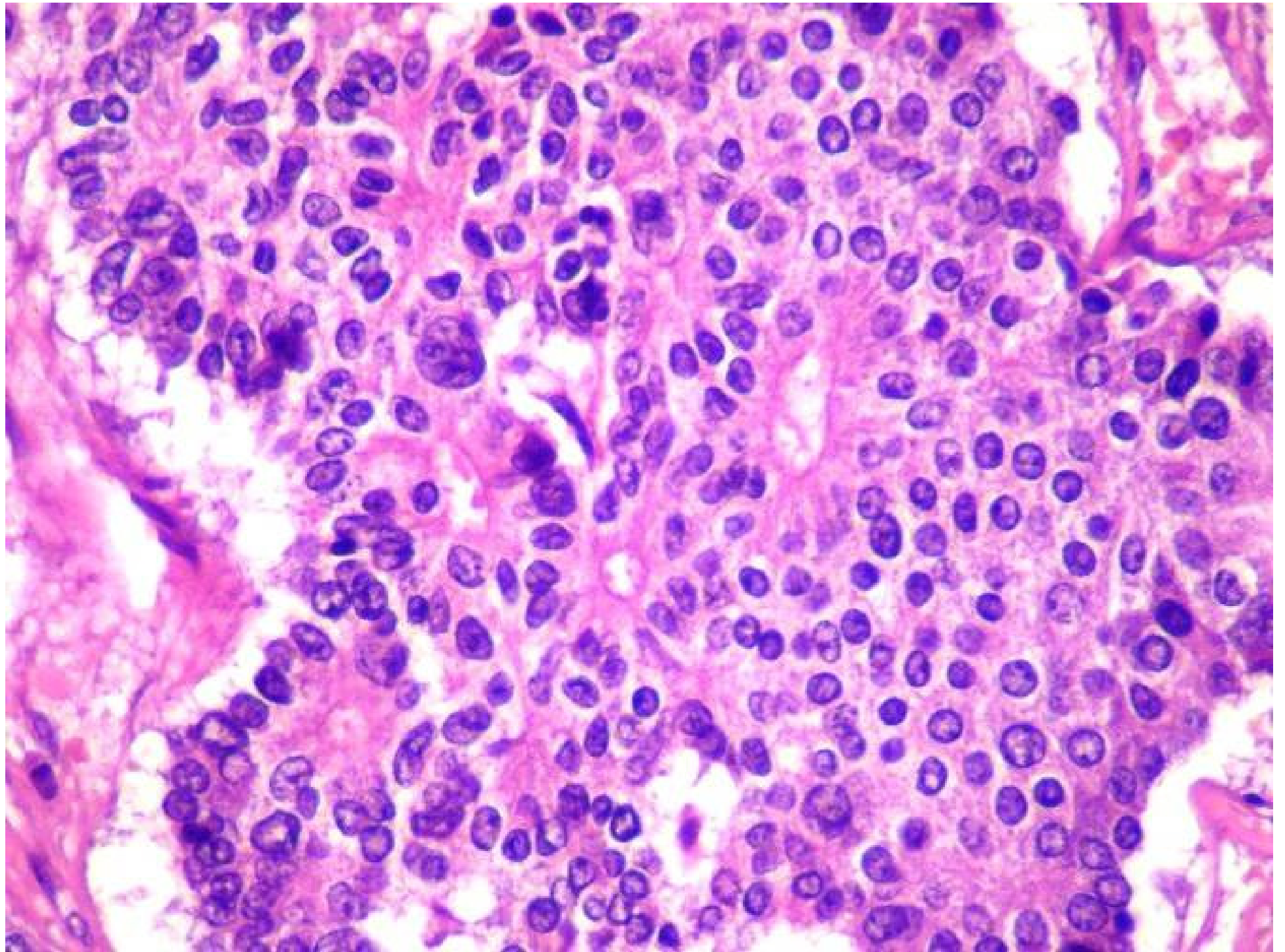
820 g

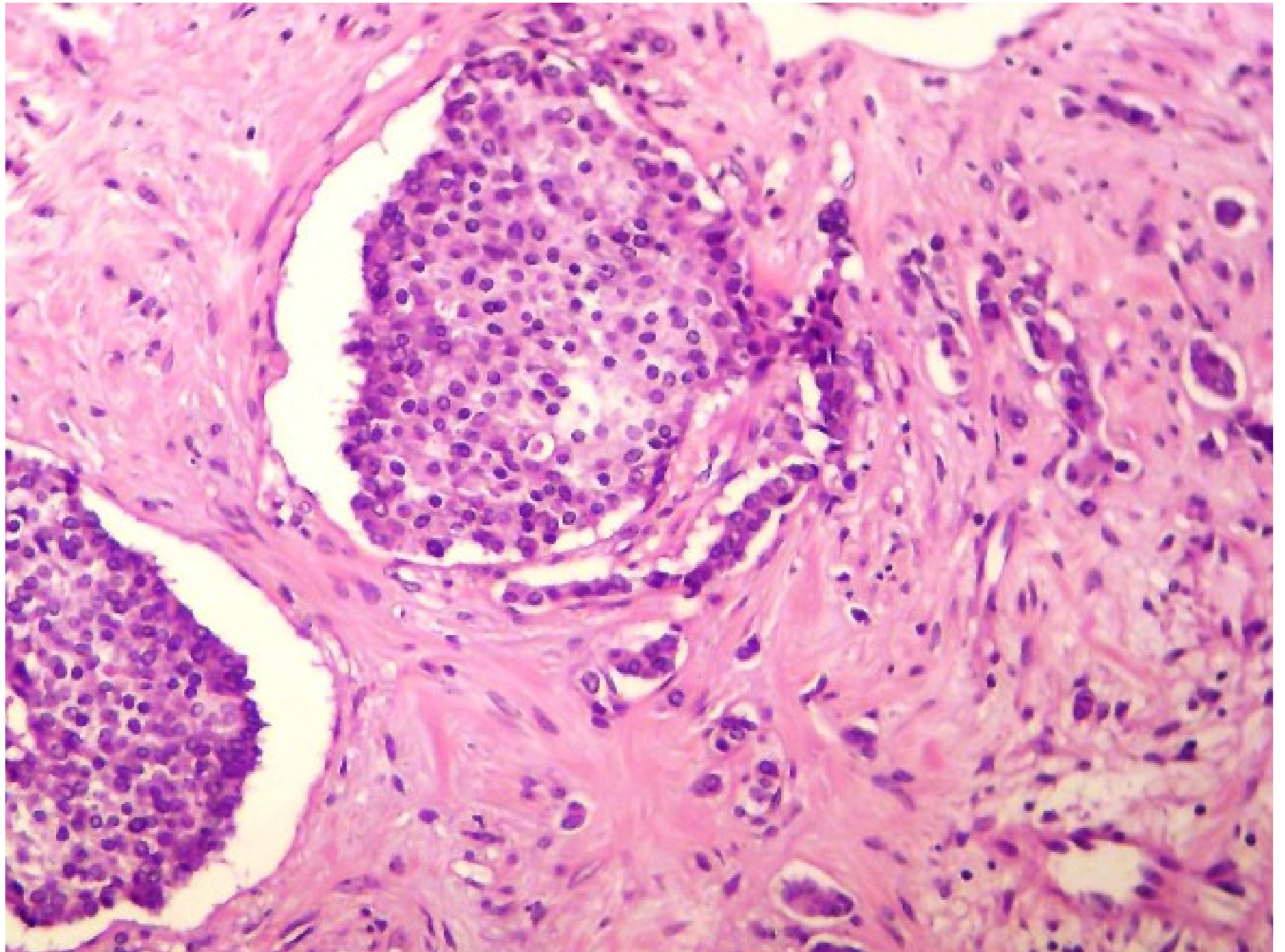
18 X 14 x 8 cm

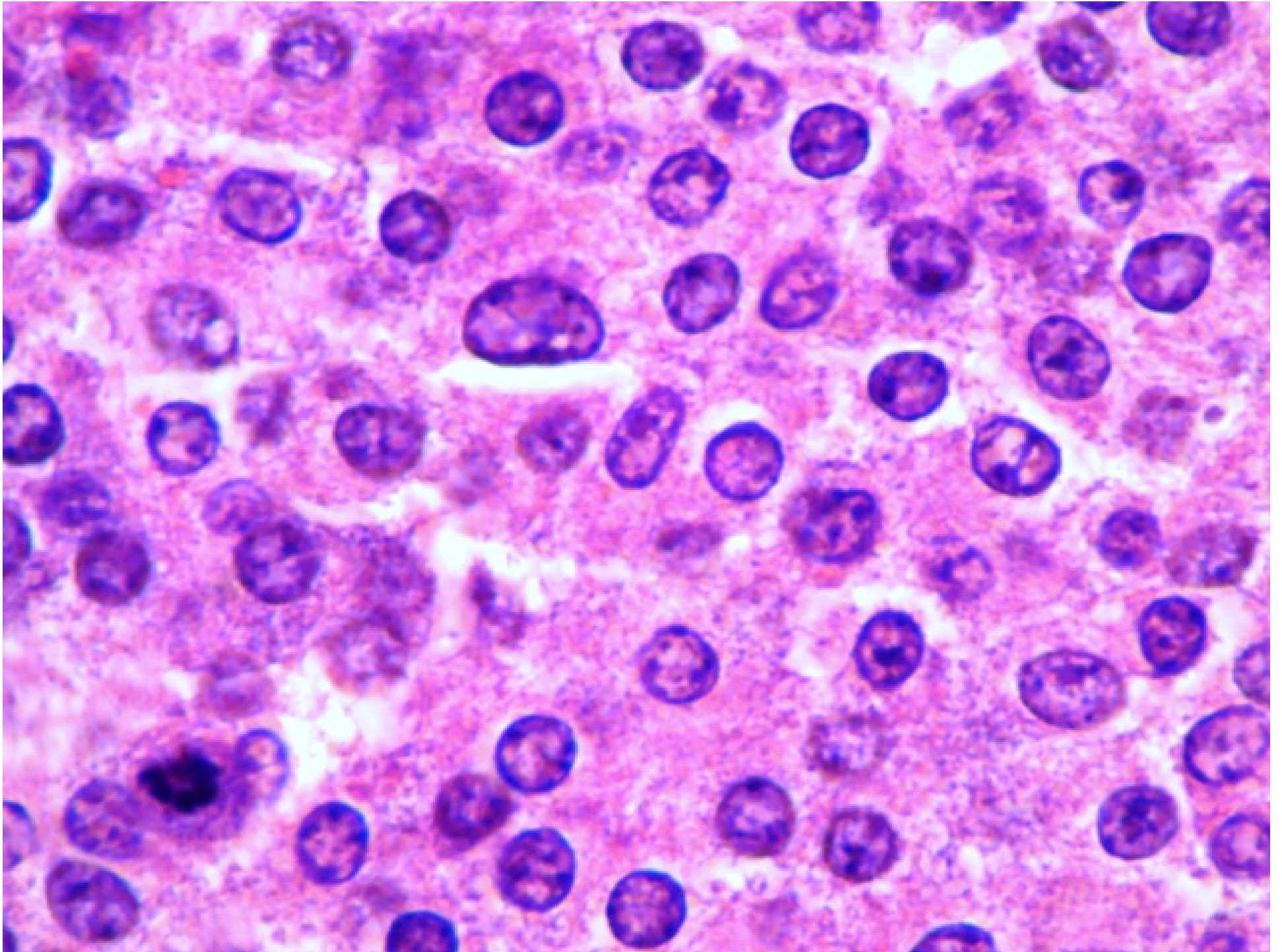


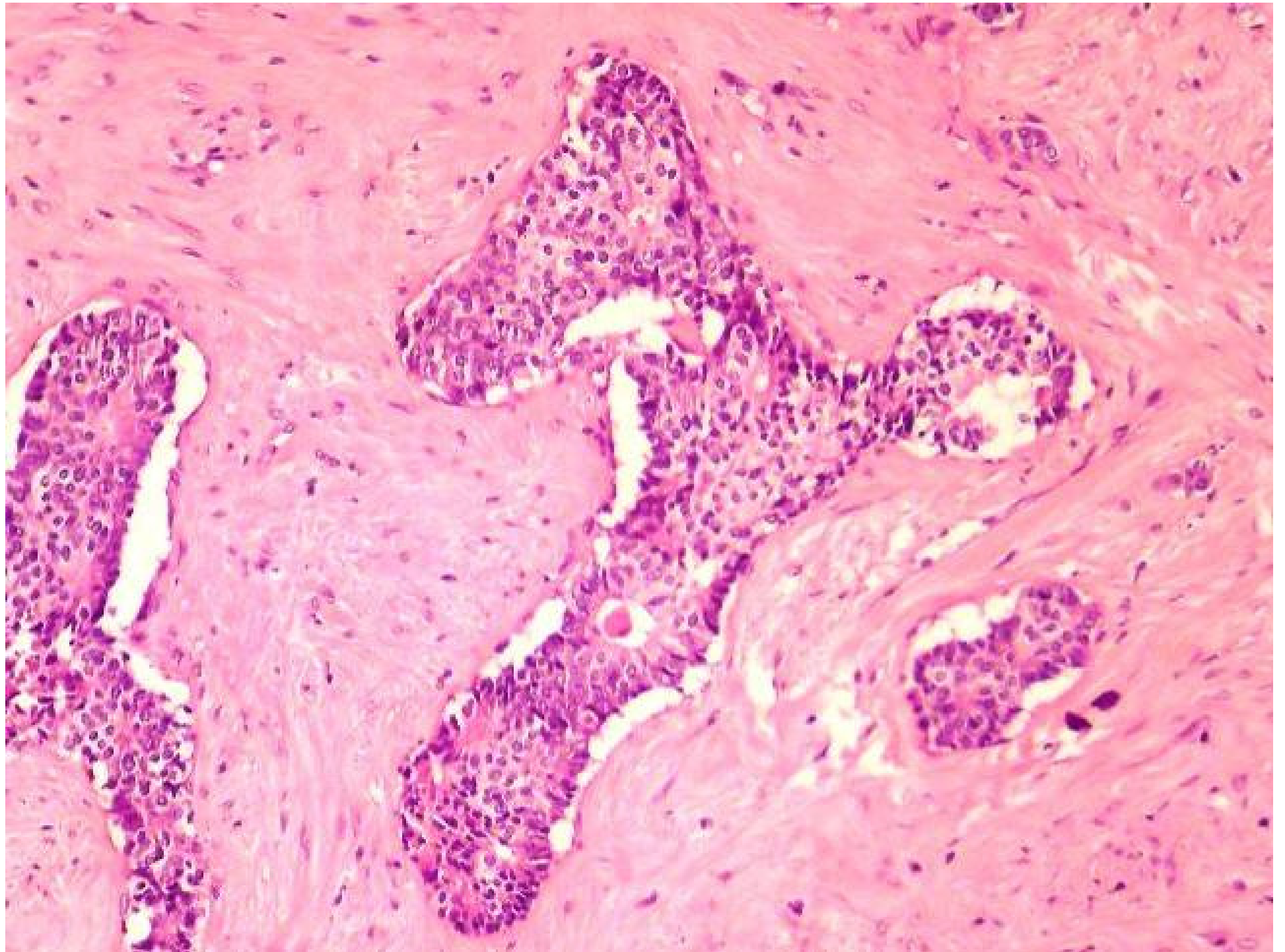


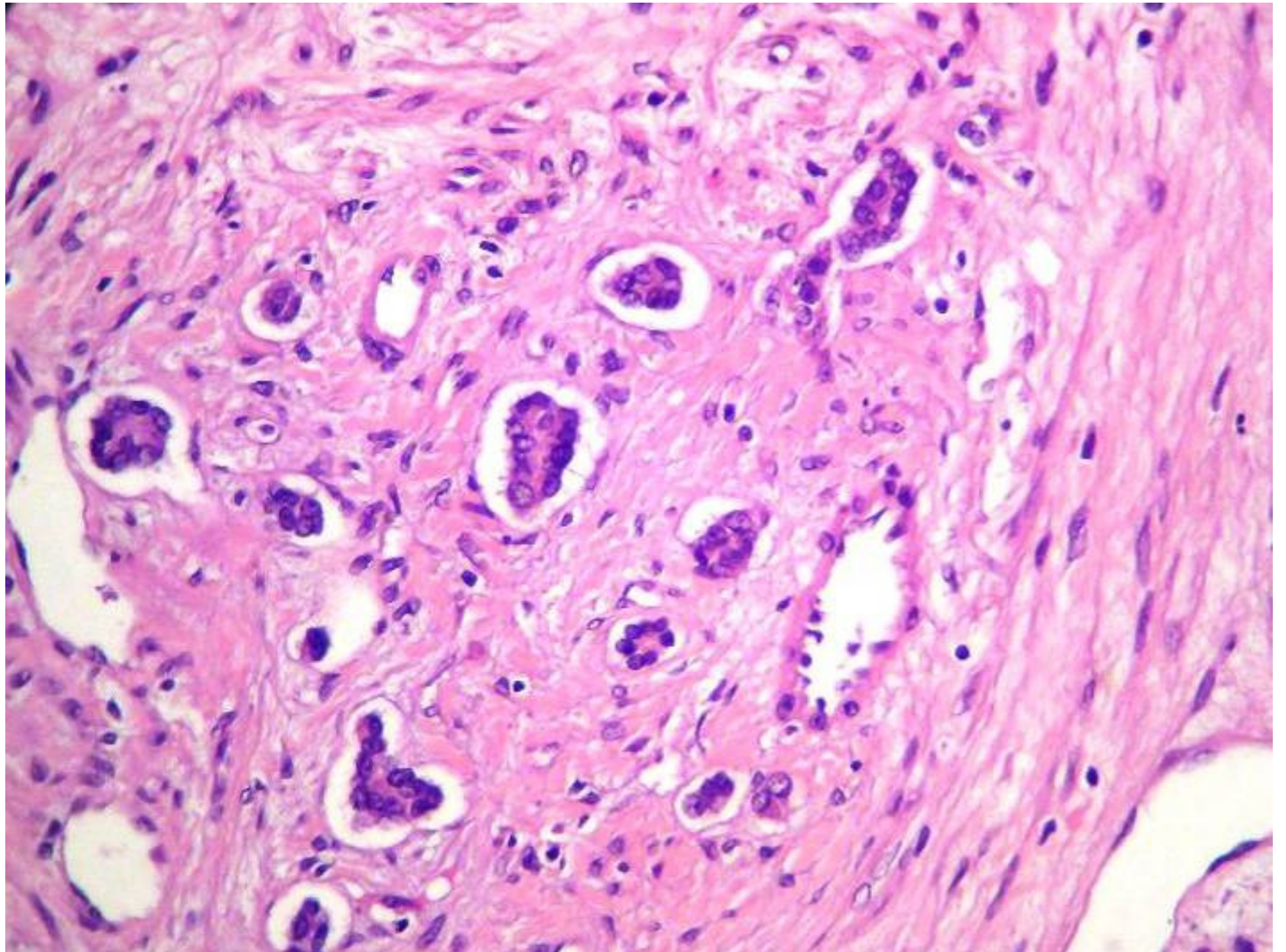


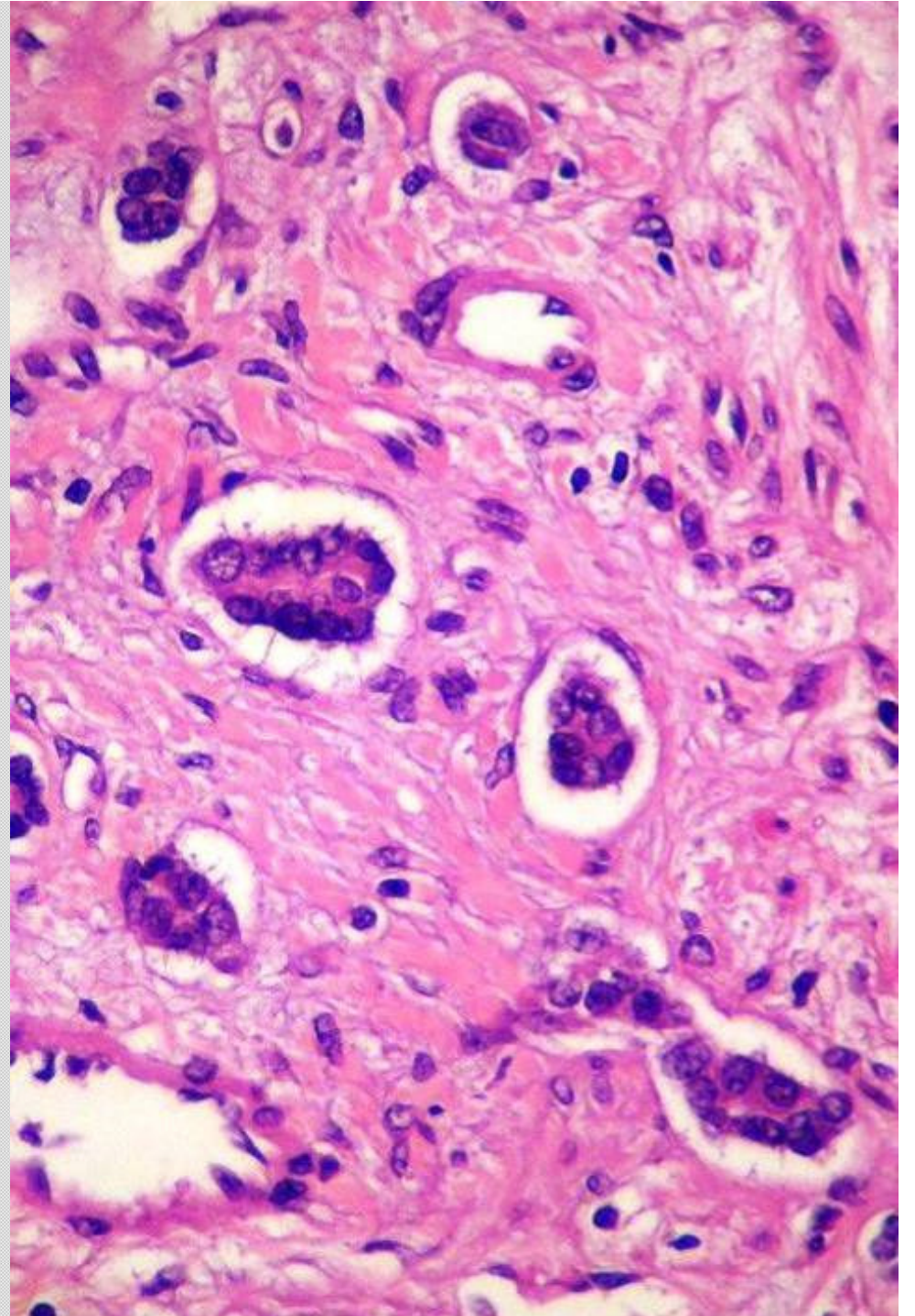
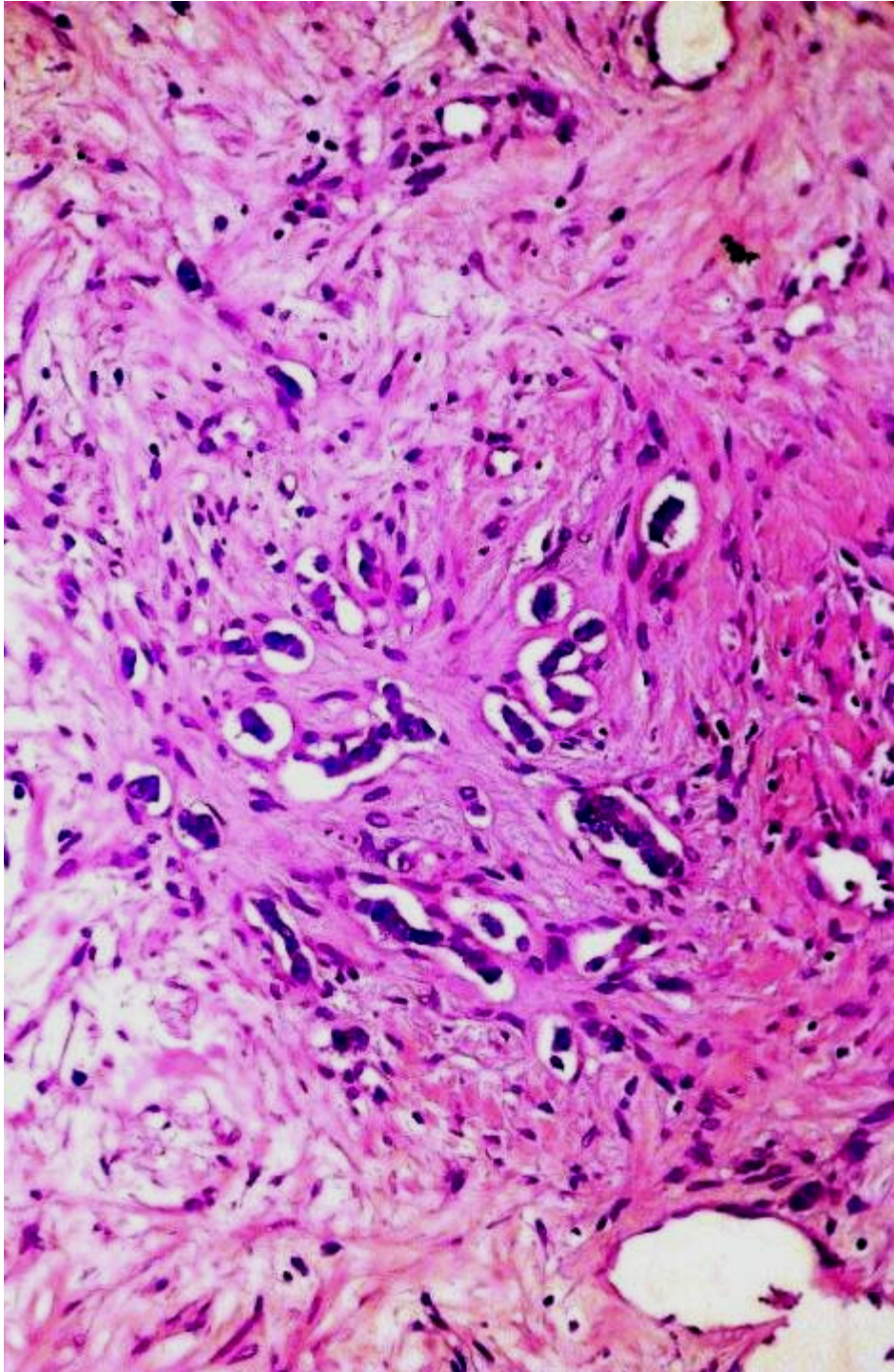


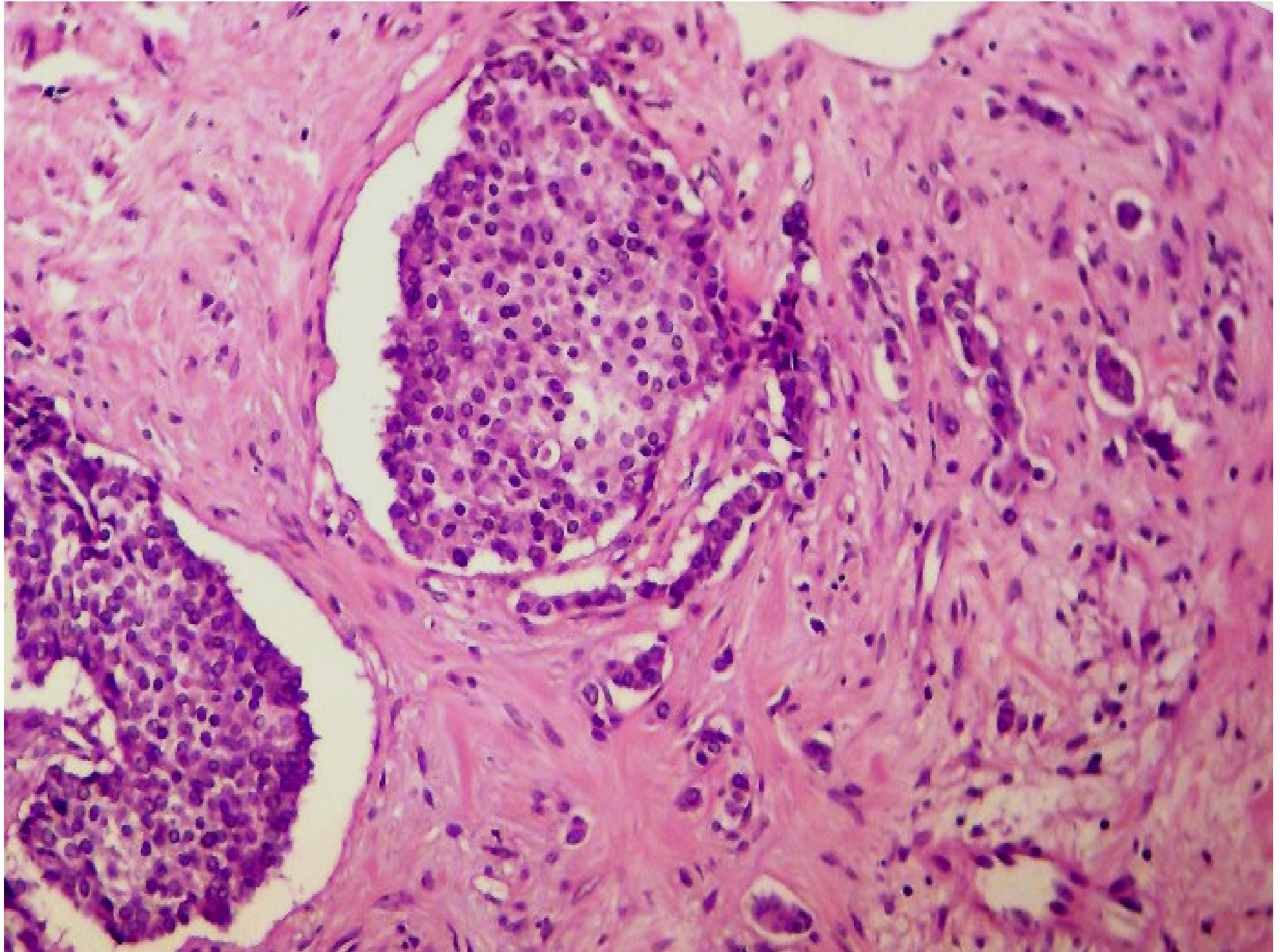


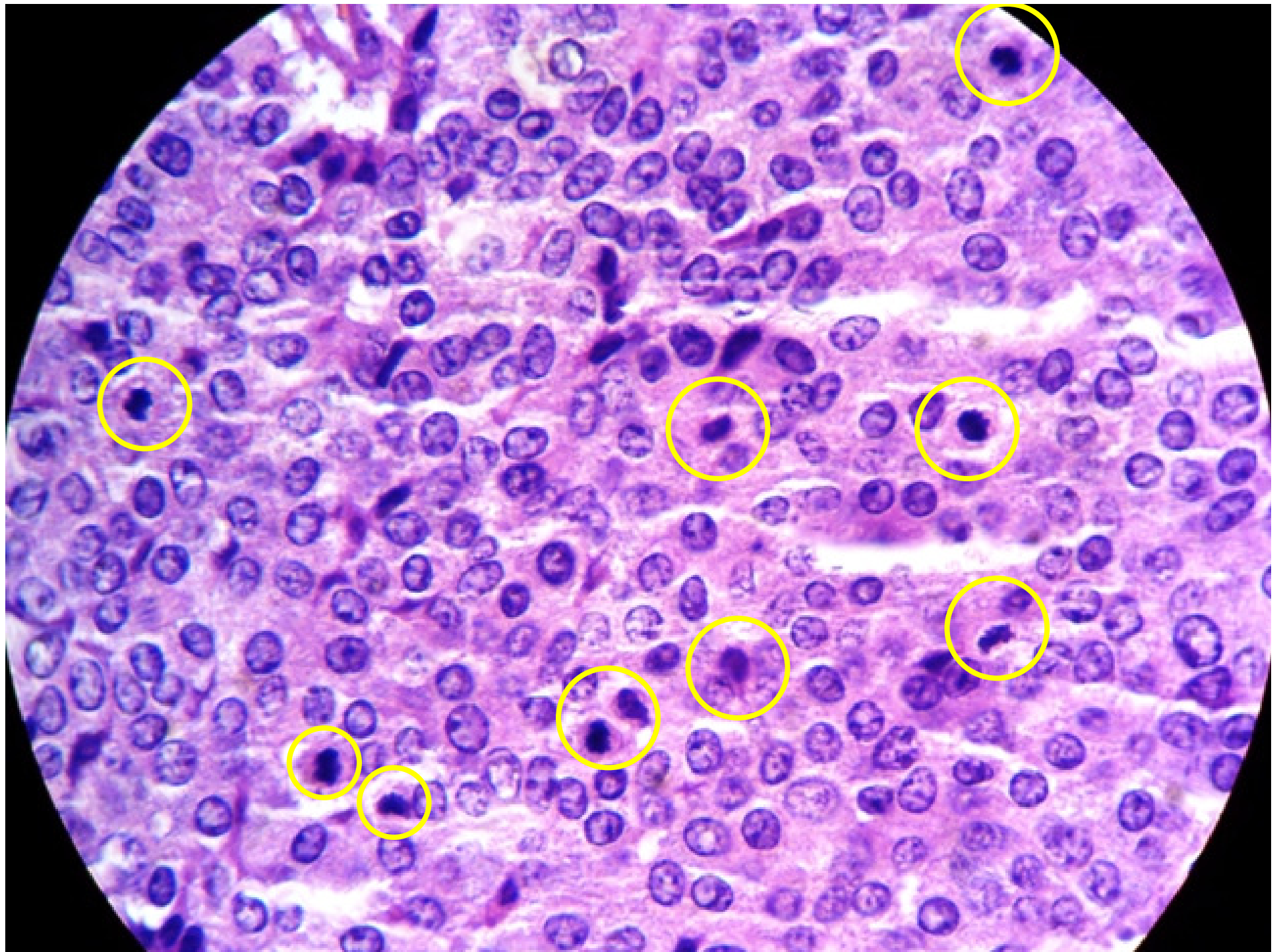


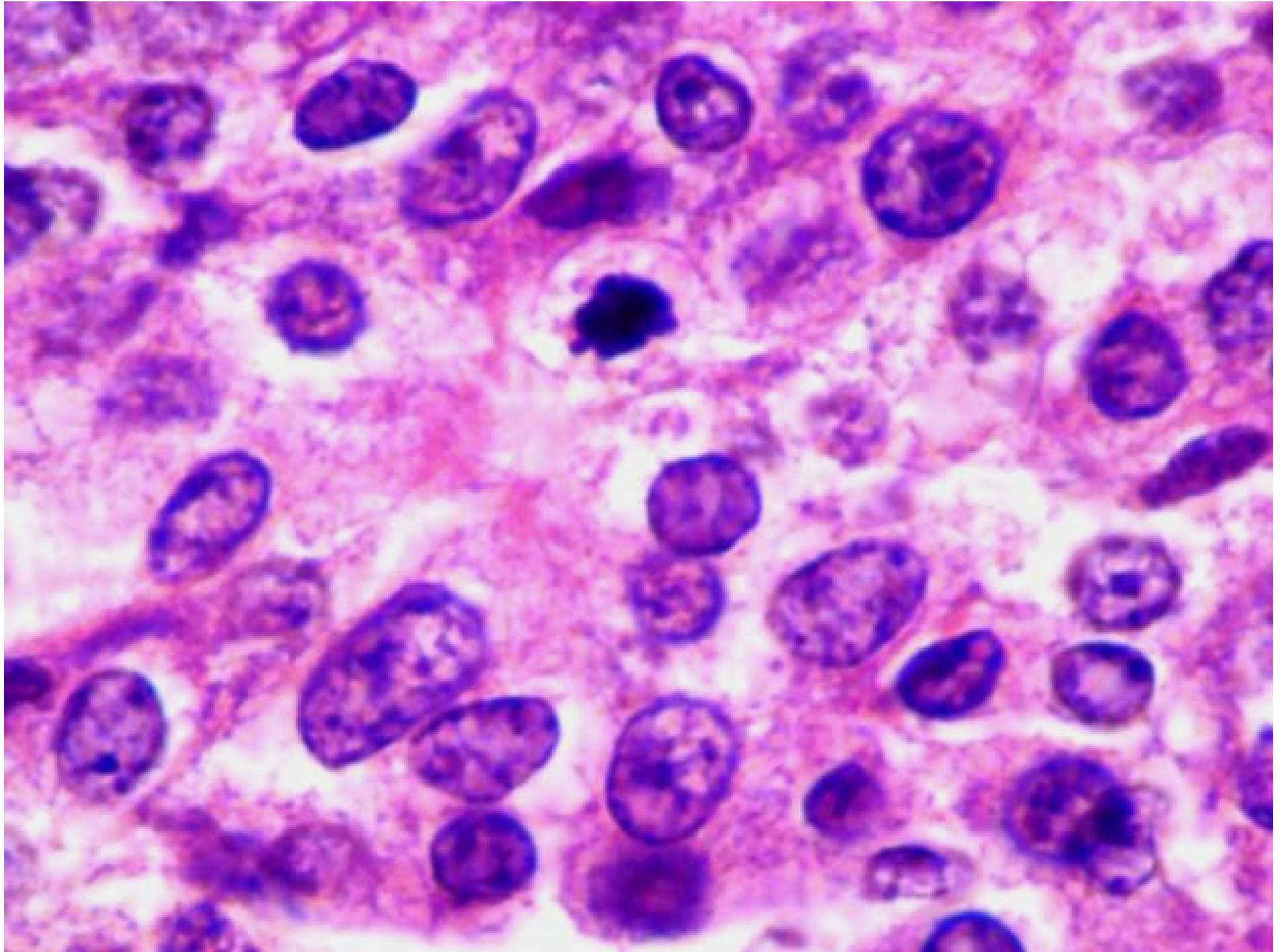


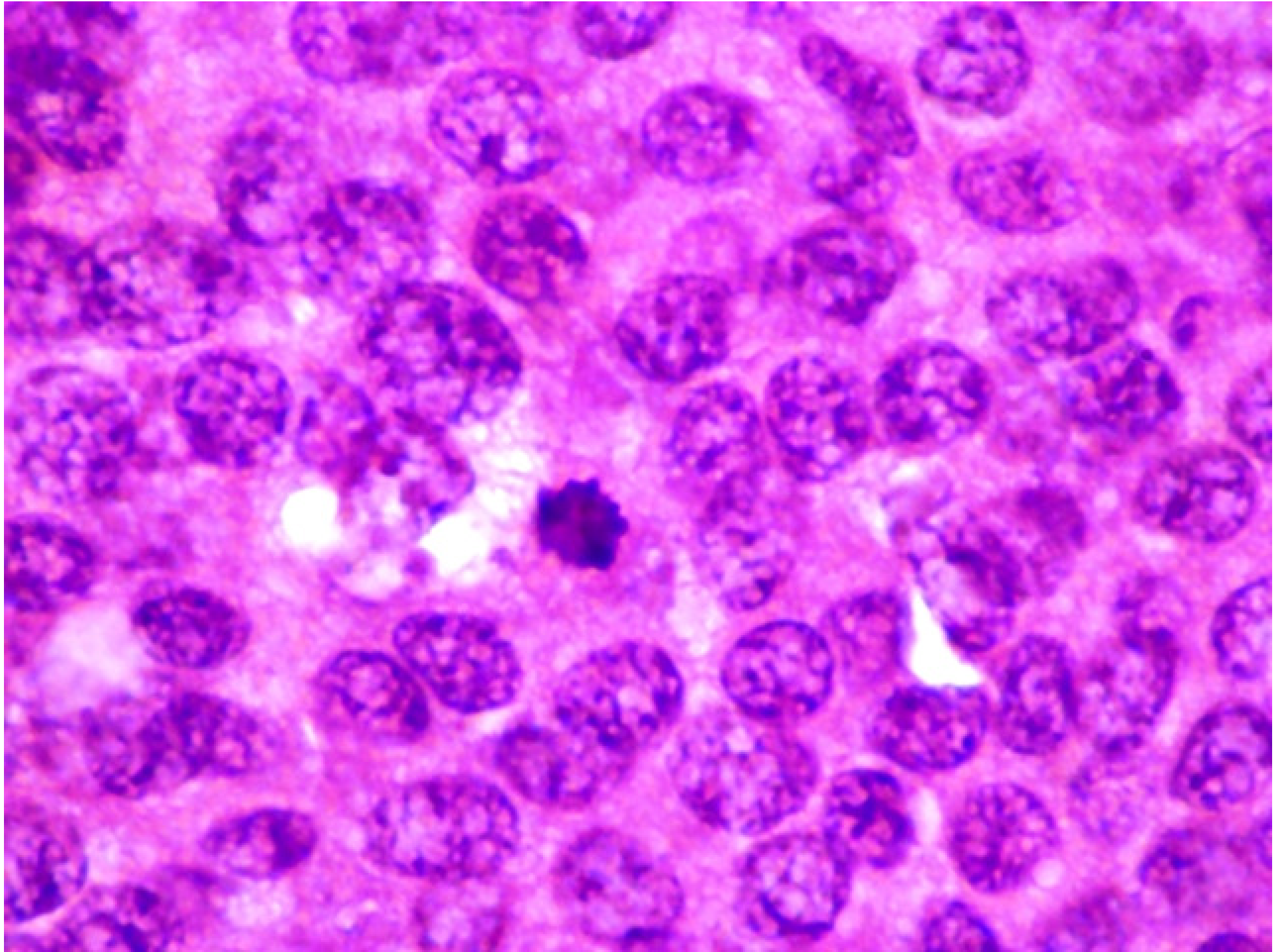


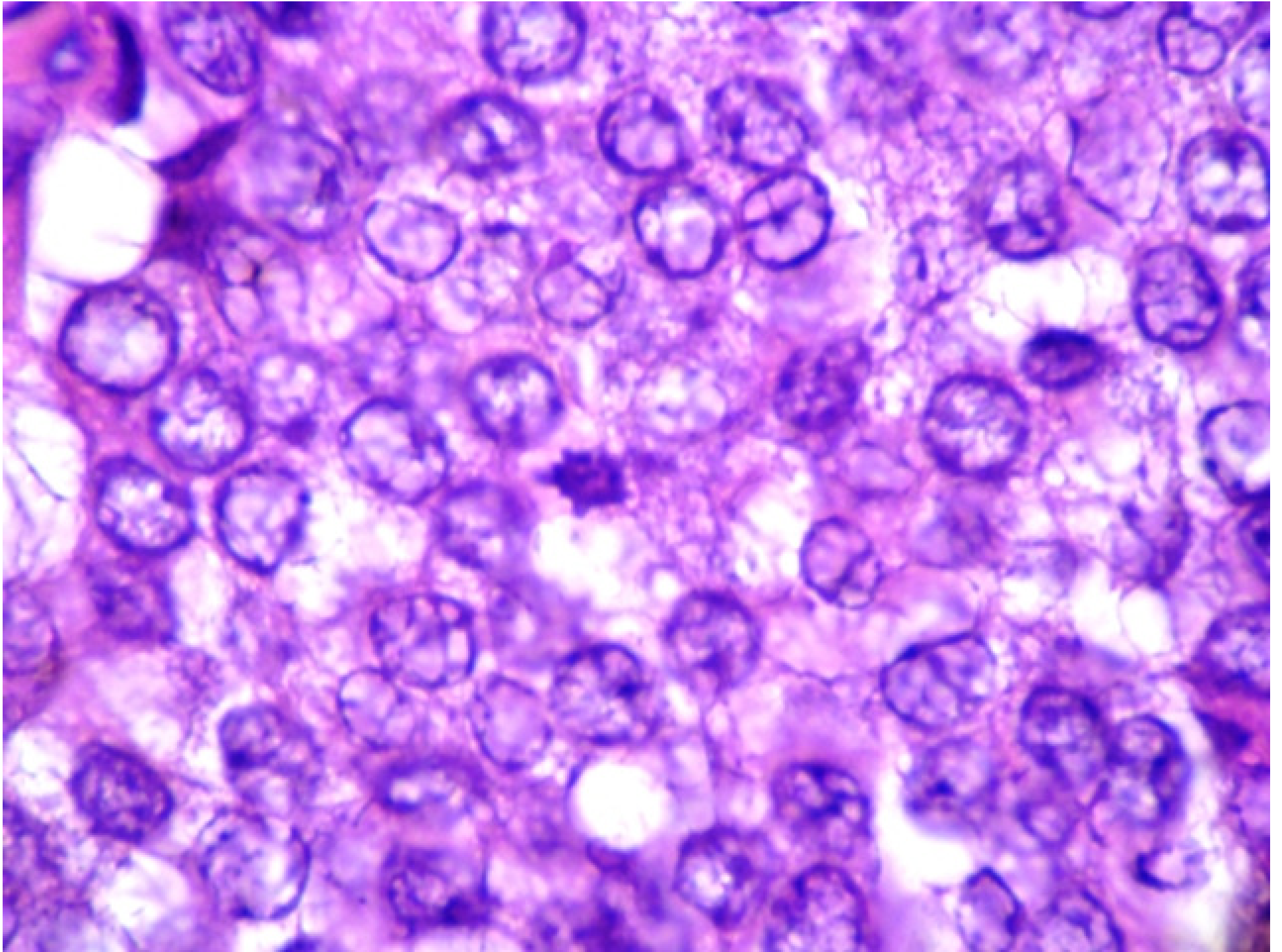




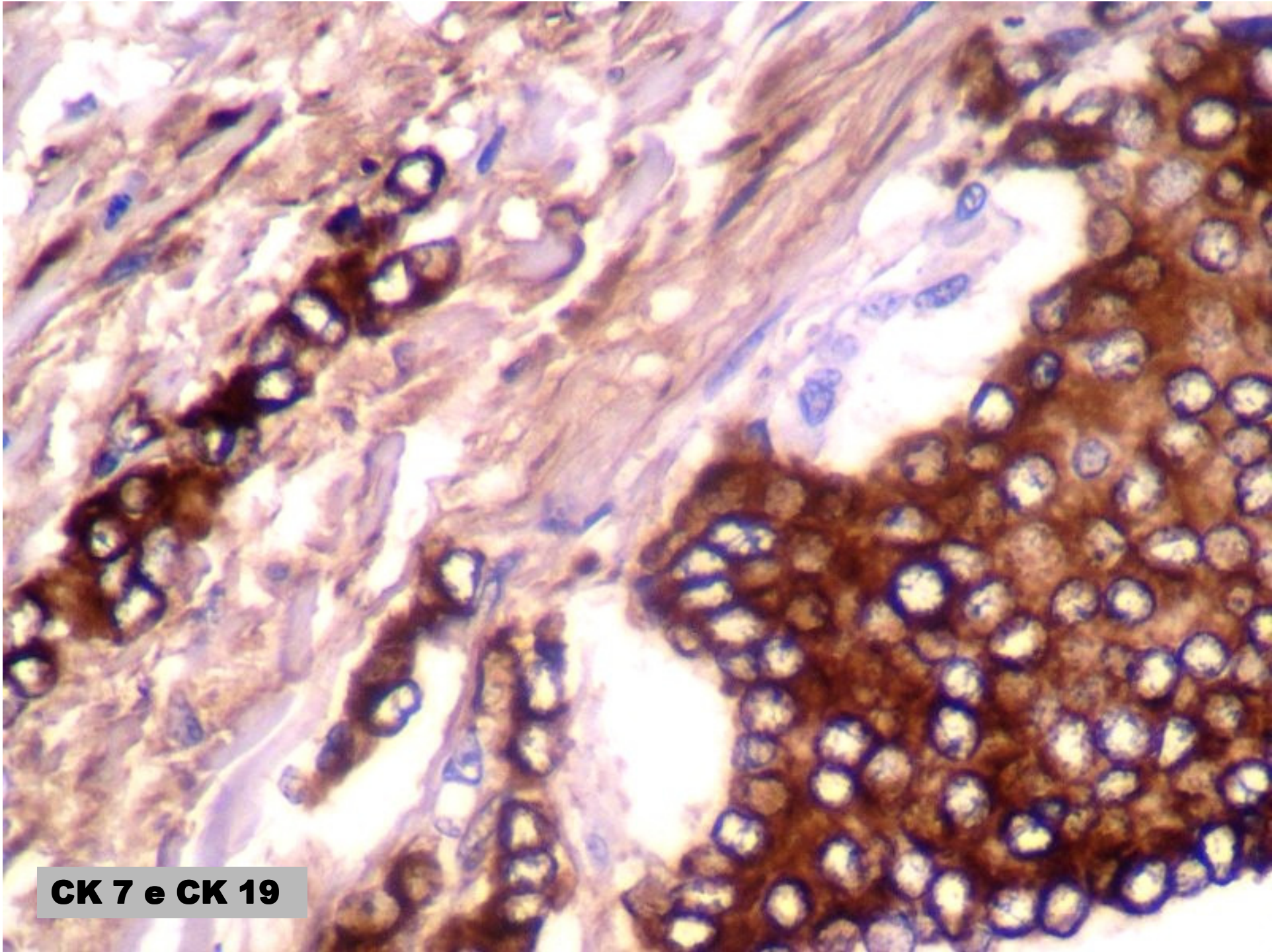




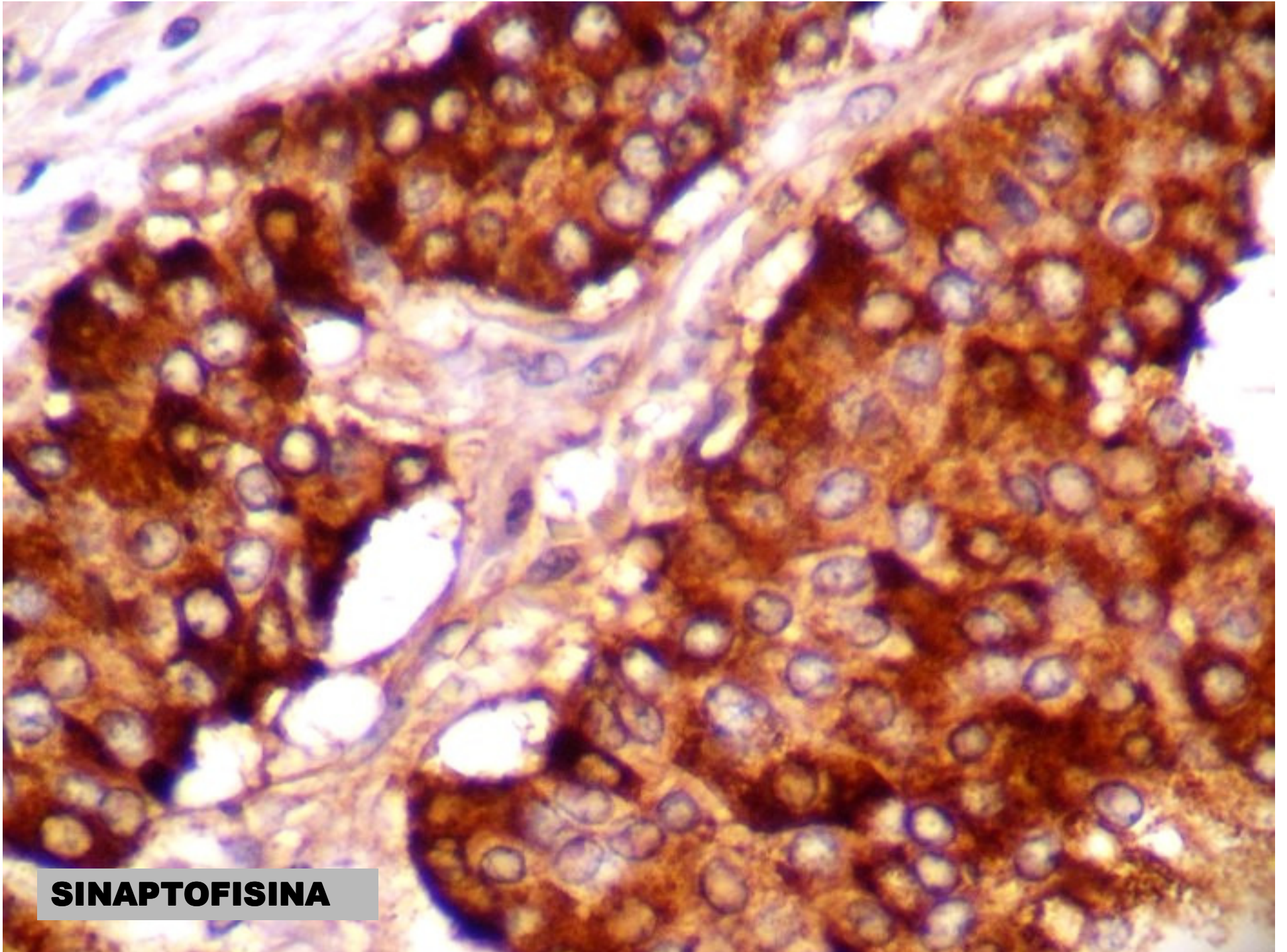




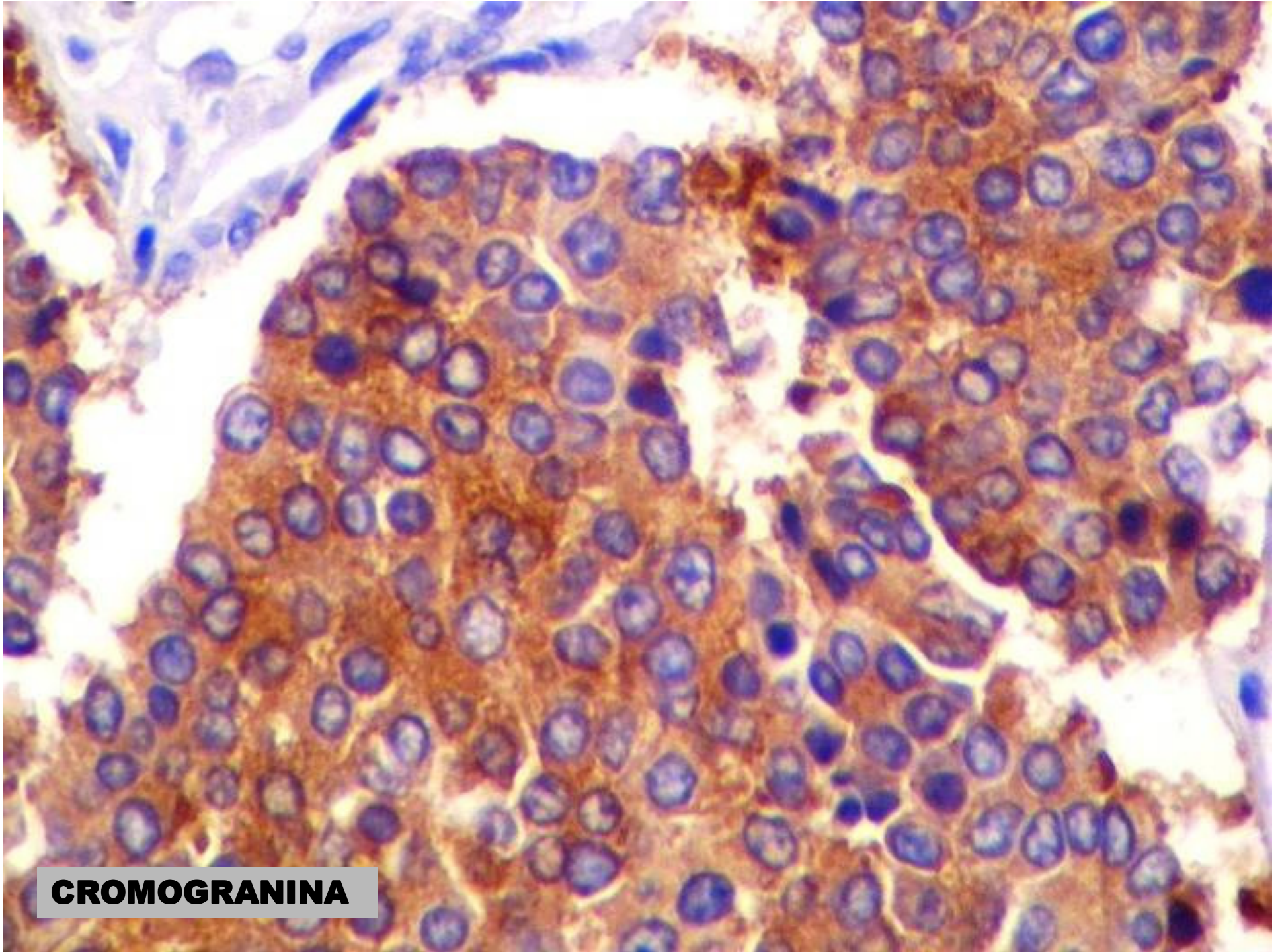
IMUNOISTOQUÍMICA



CK 7 e CK 19



SINAPTOFISINA



CROMOGRANINA

CASO DO MÊS

A Sociedade Brasileira de Patologia agradece a sua participação.

