

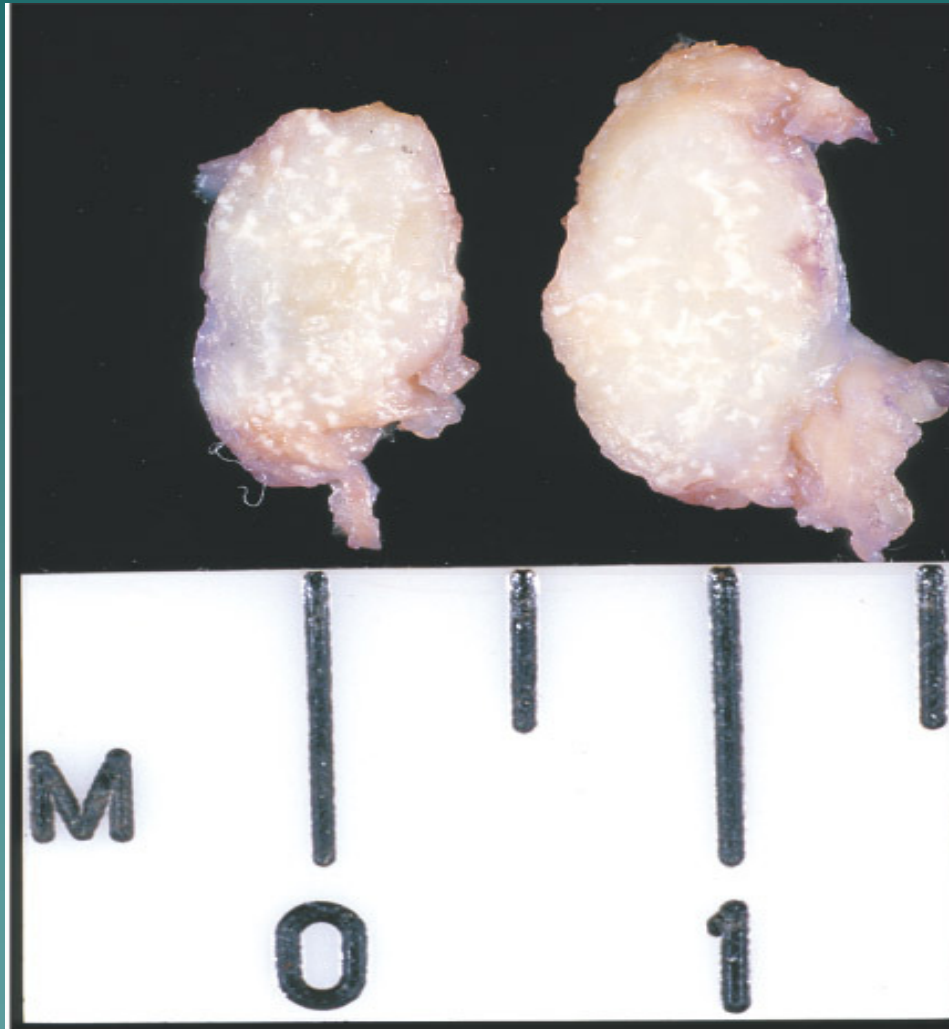
Caso do Mês

**Rodrigo Neves Ferreira
Allan Kardec de Castro Neto
HSRC-VITÓRIA-ES**

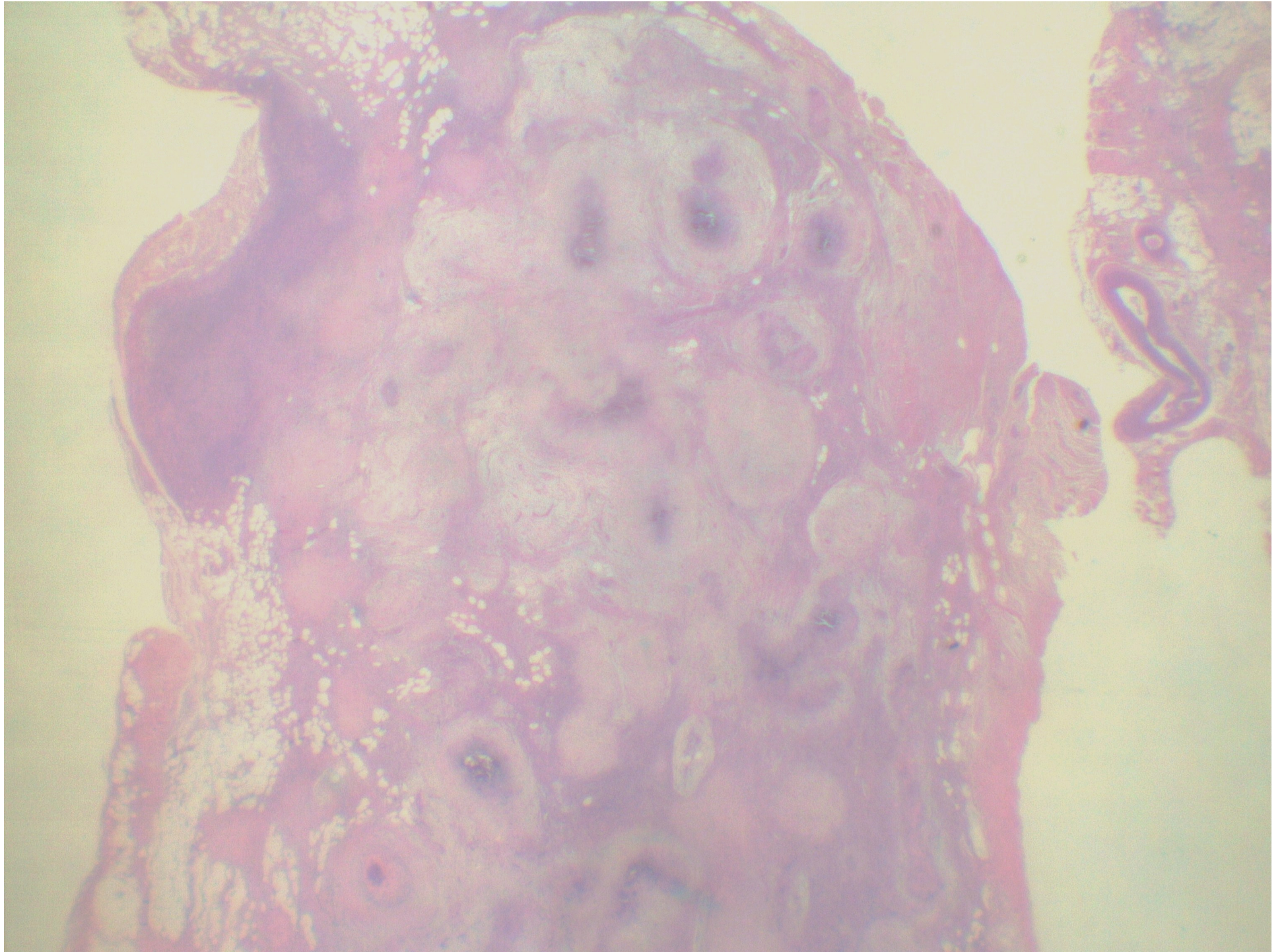
Dados clínicos

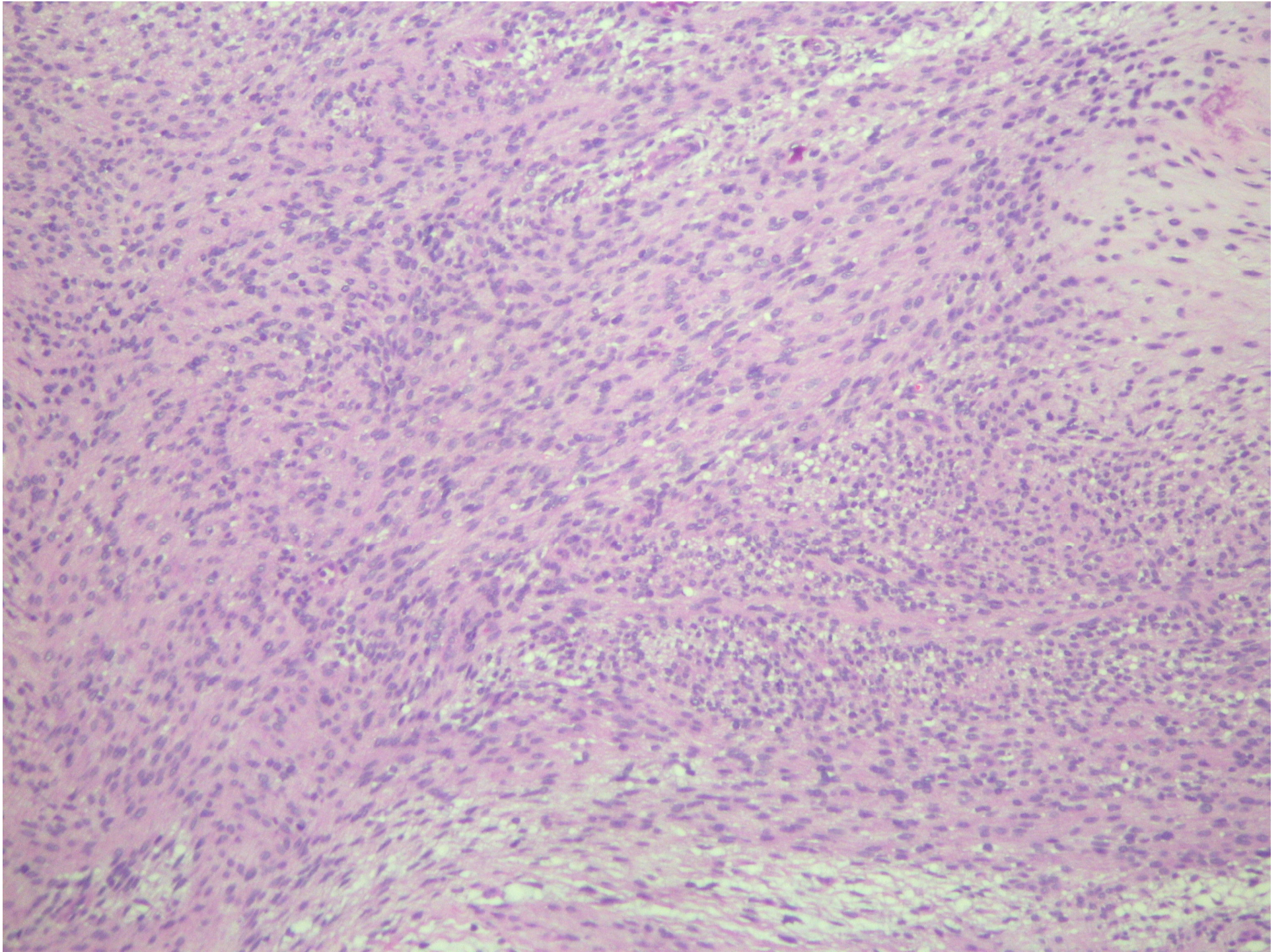
- ◆ Feminino, 9 anos, tumor aderido em extensor ulnar do carpo
- ◆ Dorso de mão esquerda

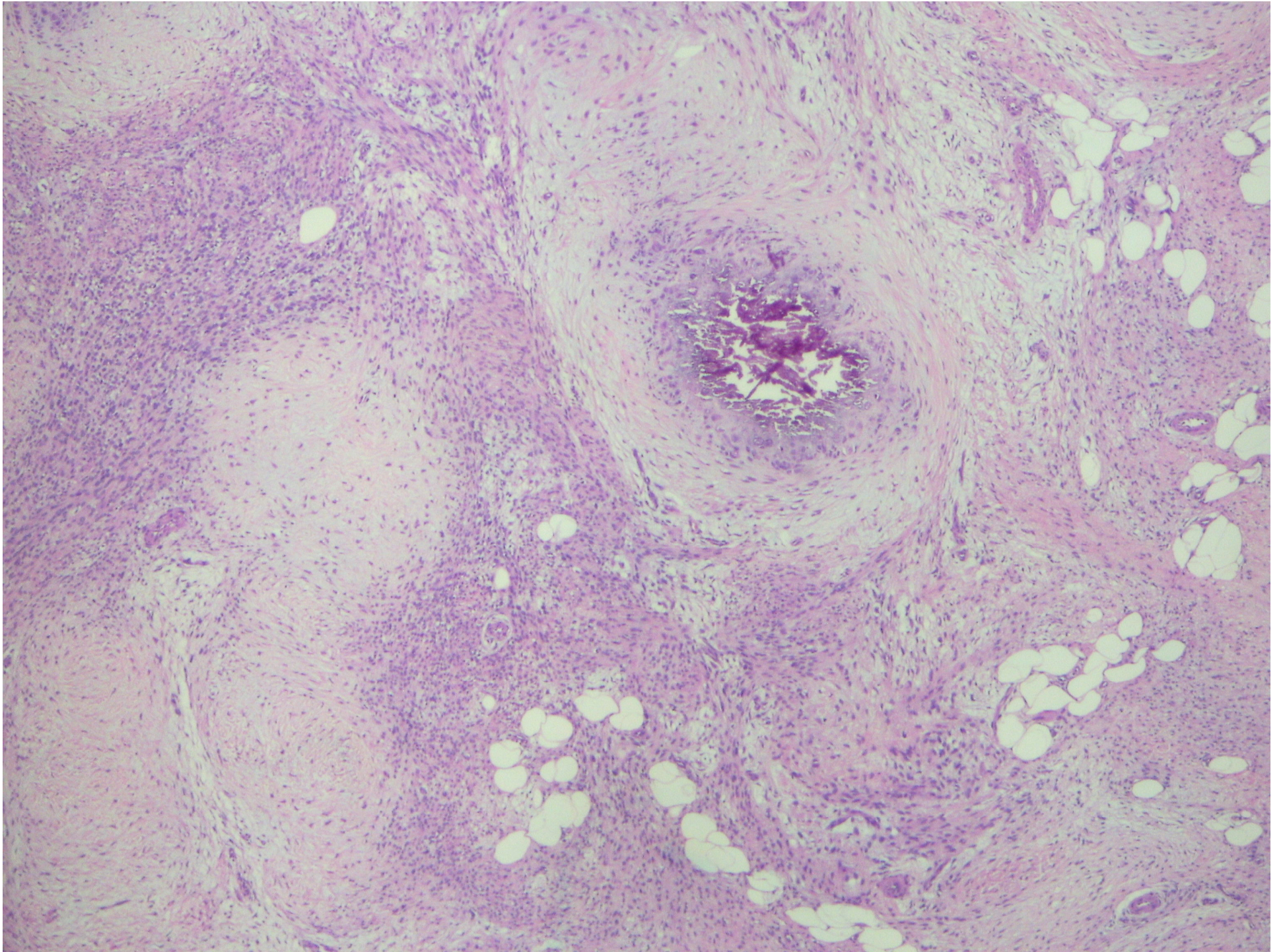
Macroscopica

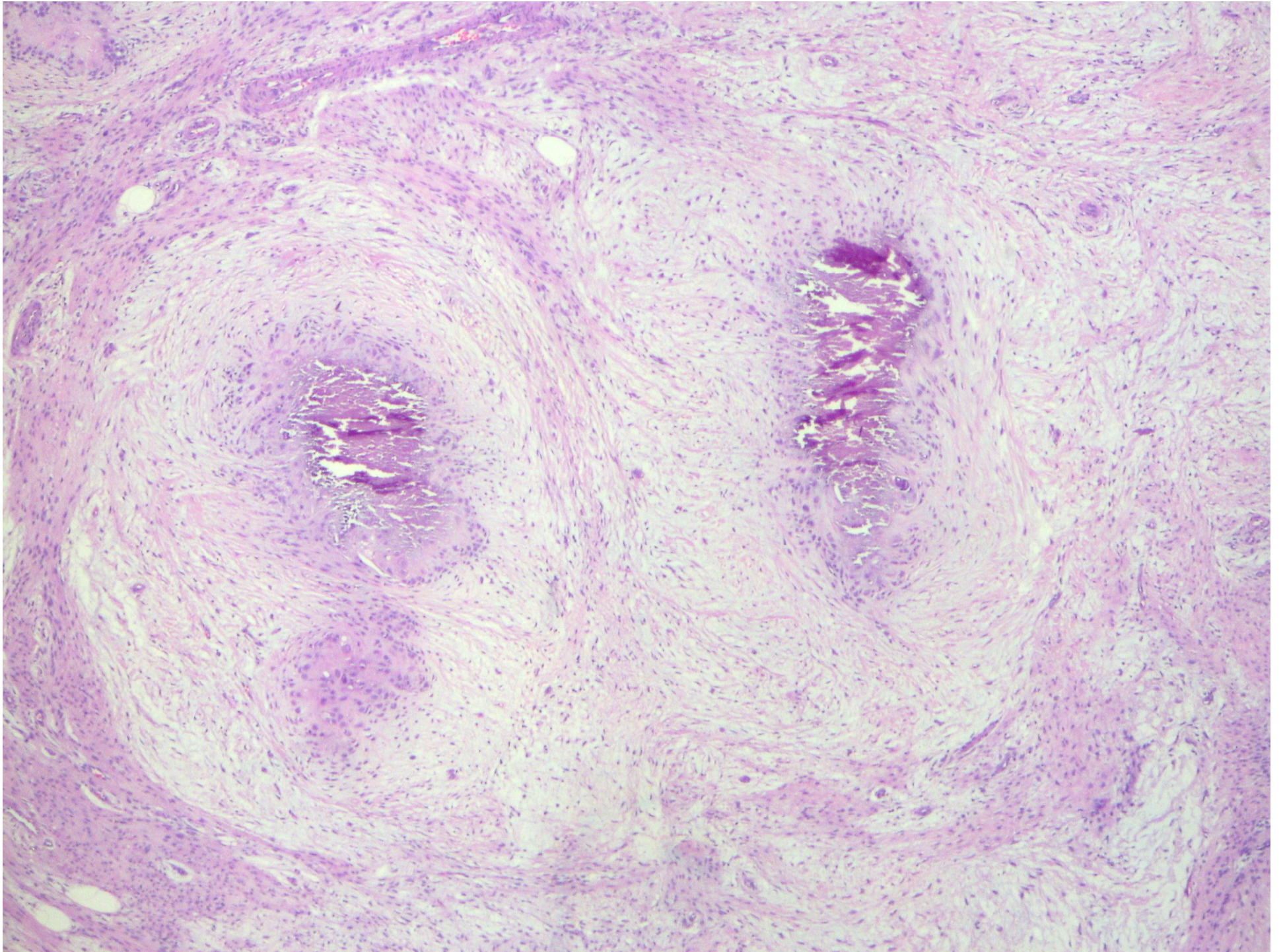


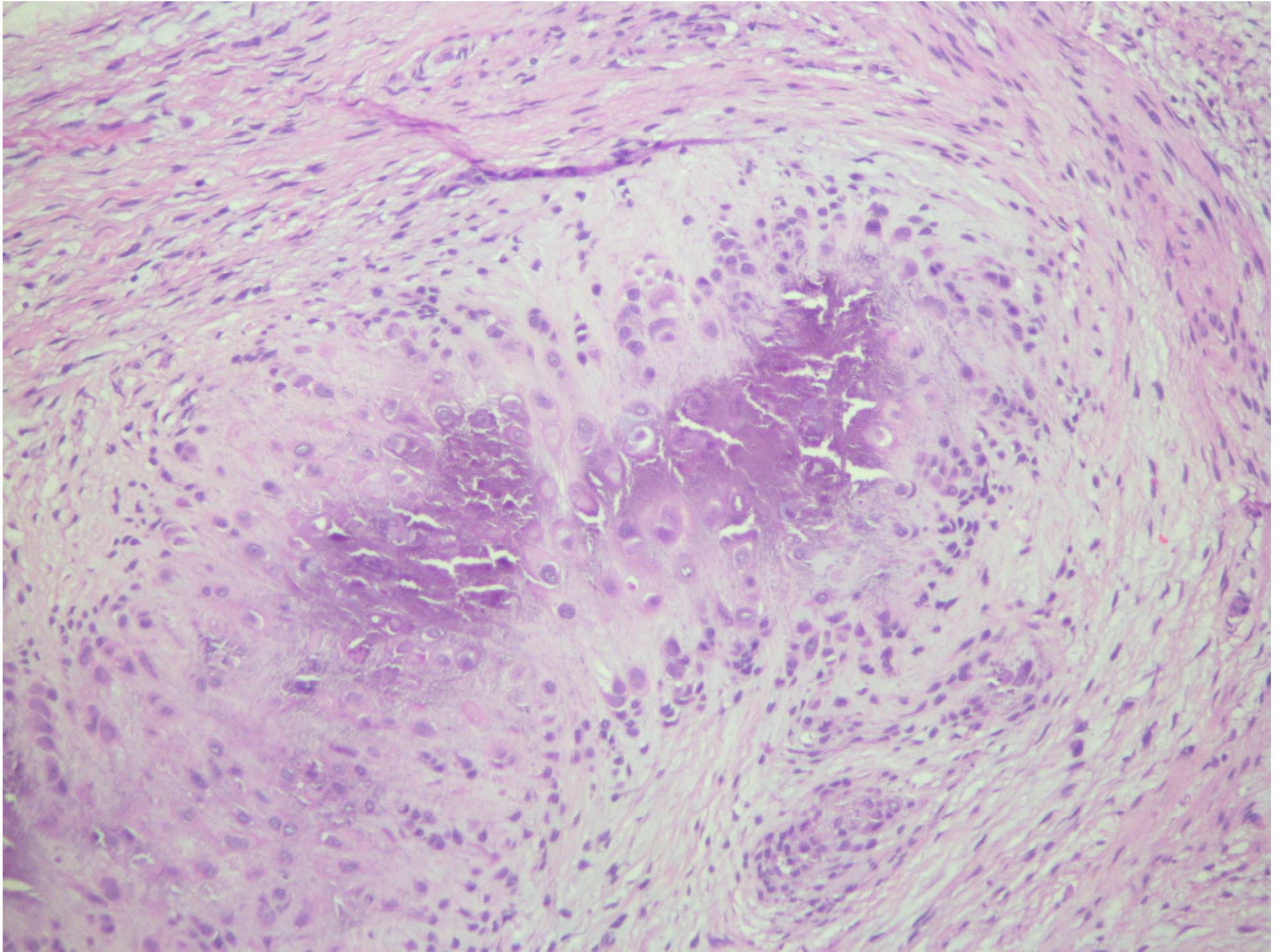
008 Weiss and Goldblum. *Enzinger and Weiss's Soft Tissue T*

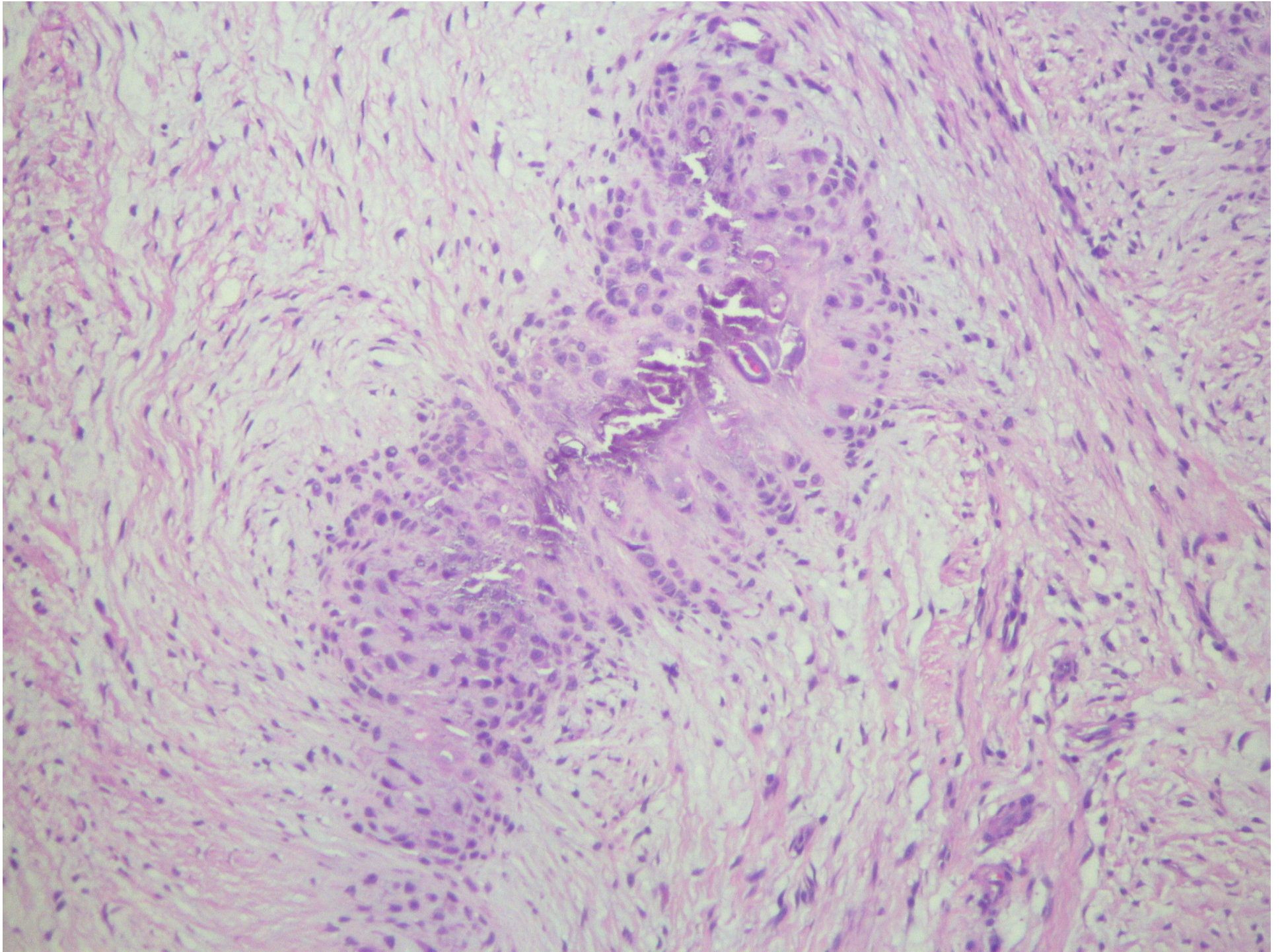


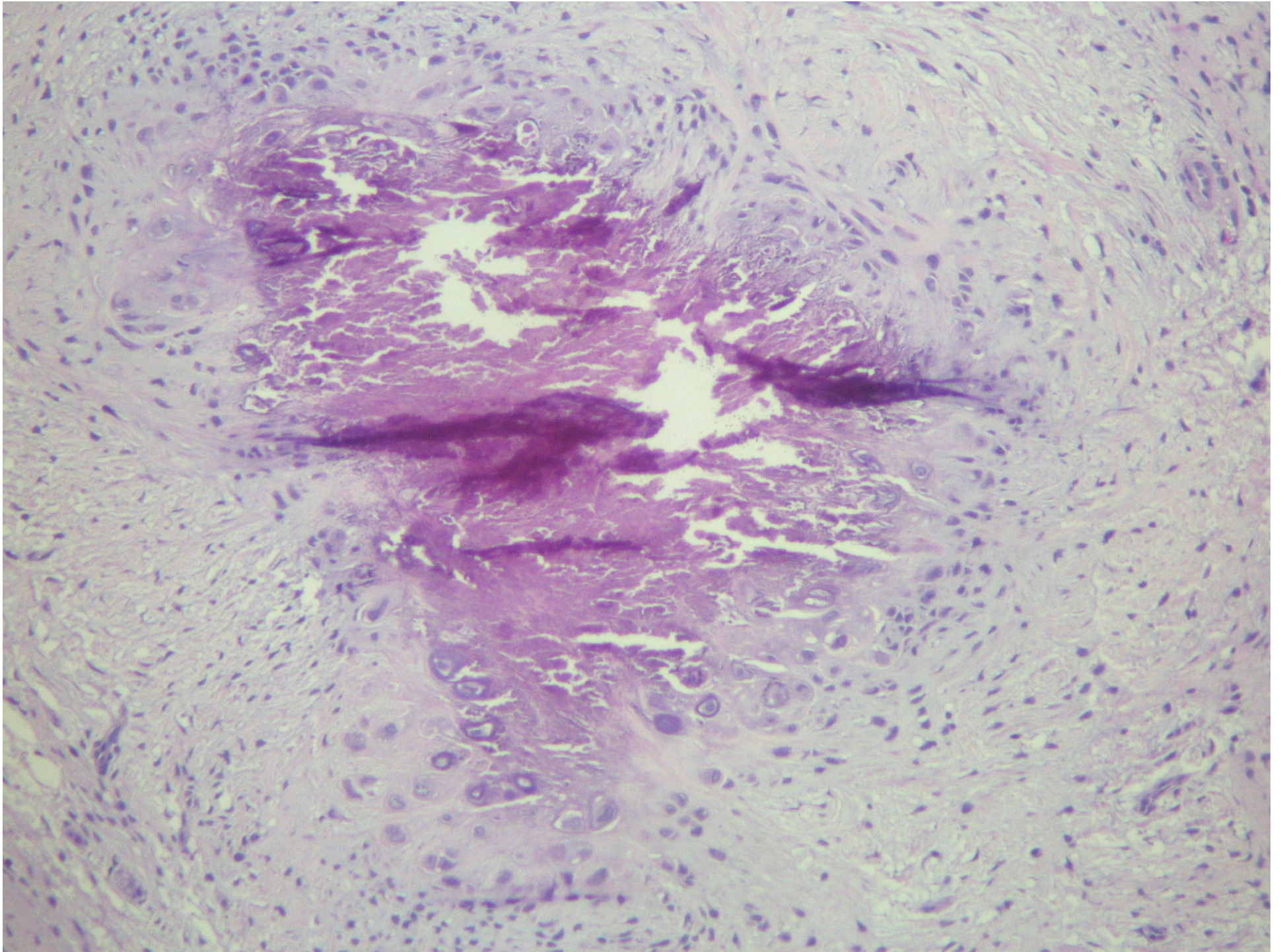


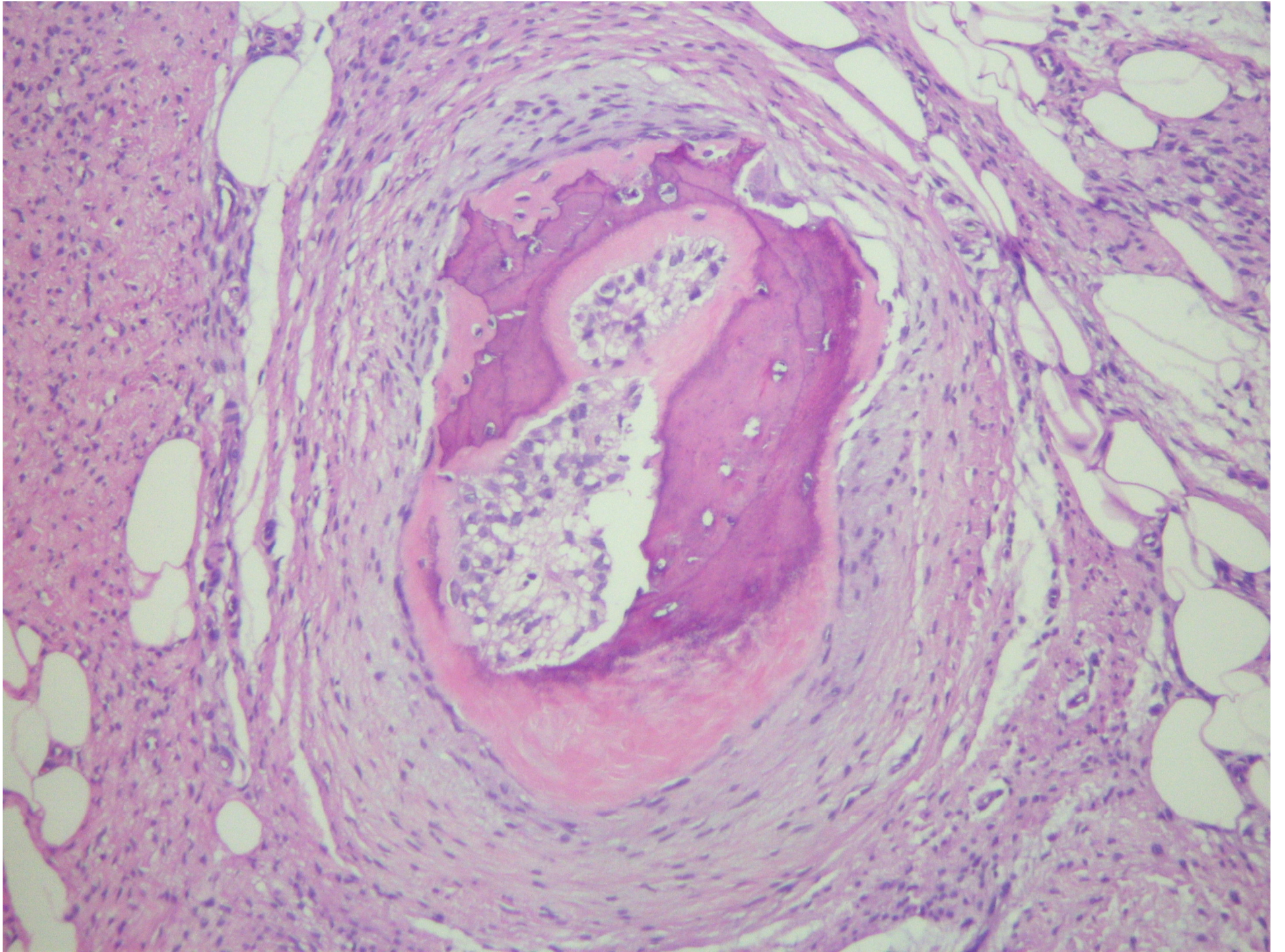


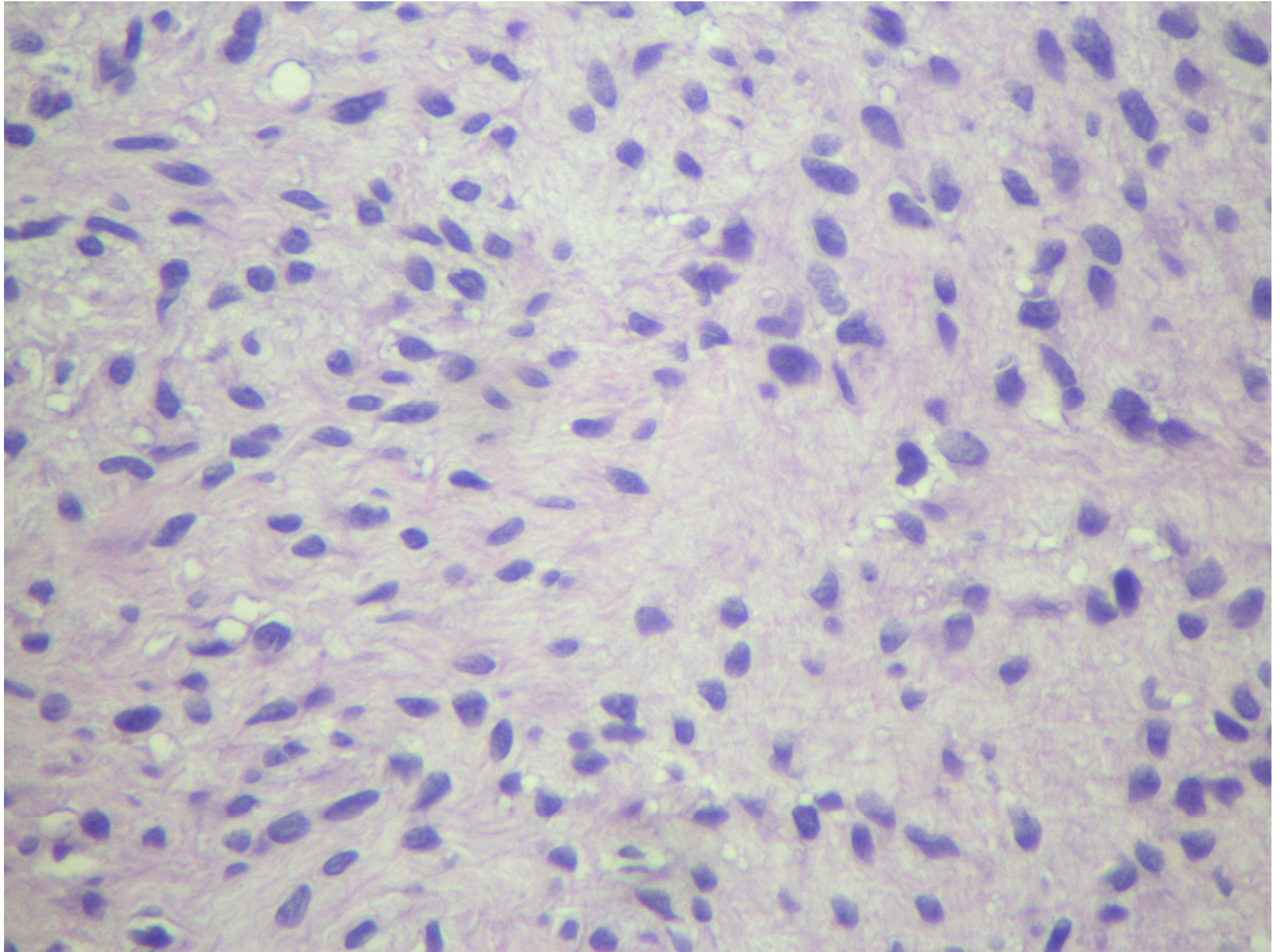


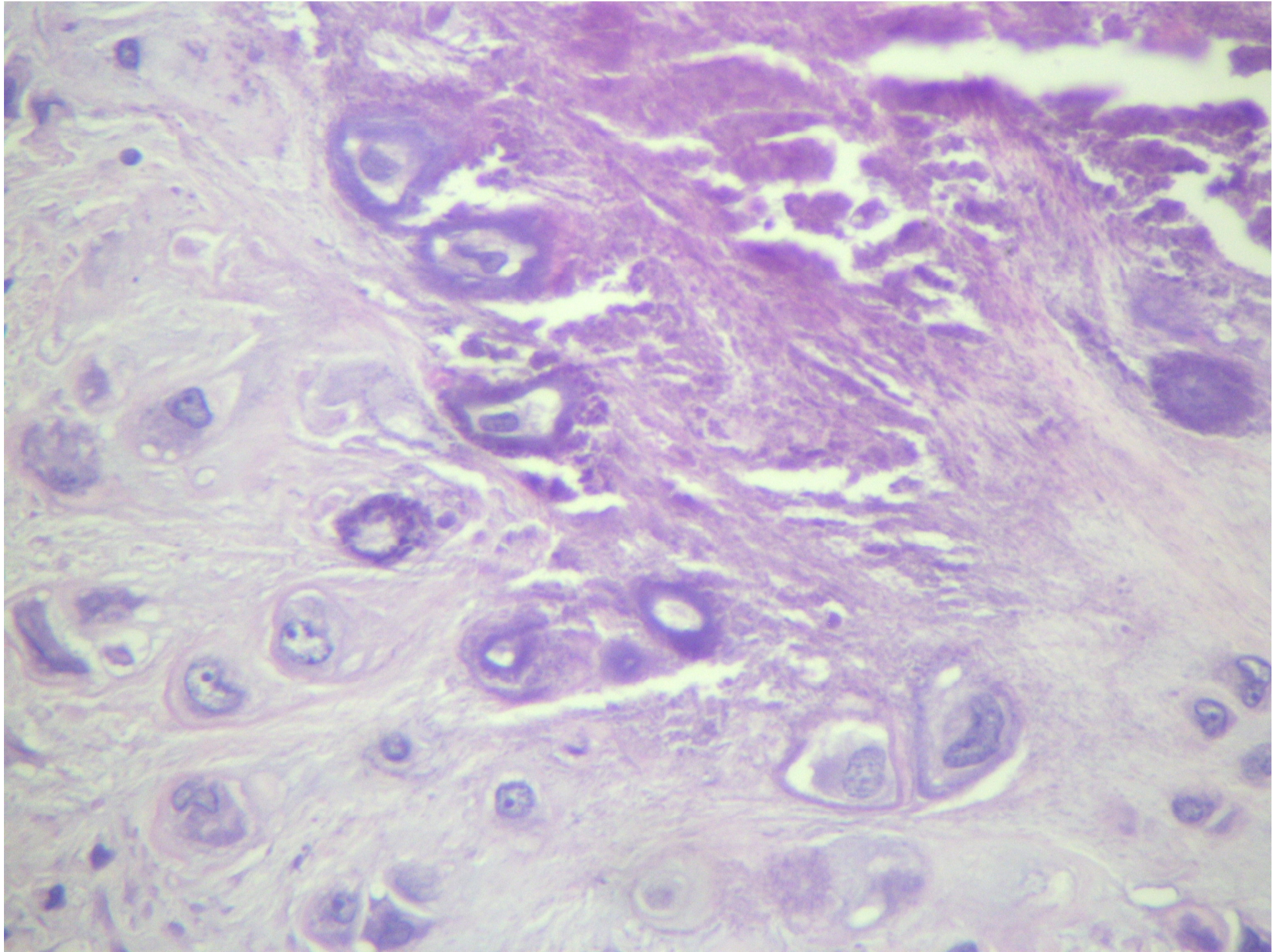


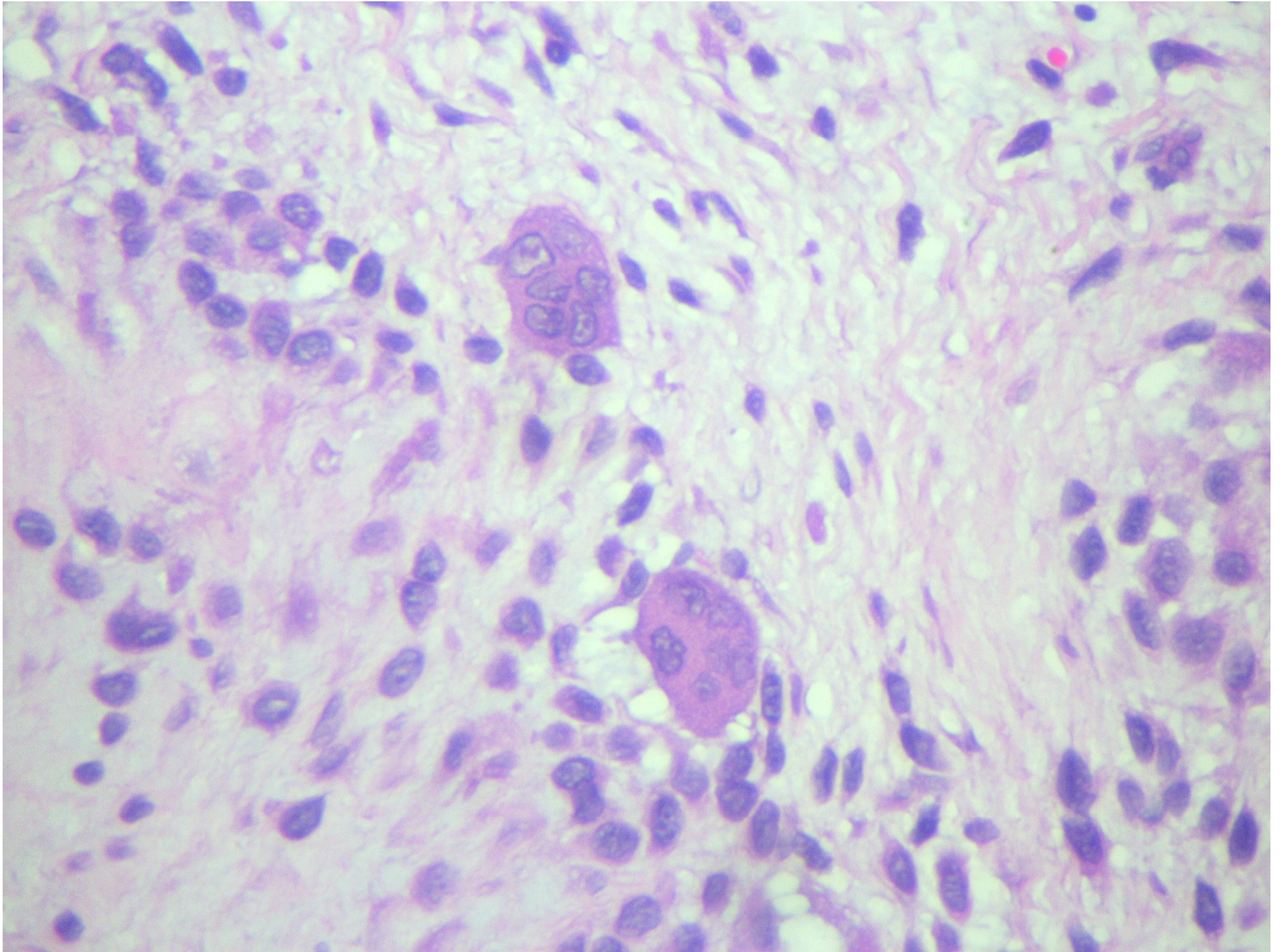












Qual é seu diagnóstico?

- ◆ **Fibromatose infantil**
- ◆ **Fibromatose palmar**
- ◆ **Fibroma aponeurótico calcificante**
- ◆ **Sarcoma sinovial tipo fibroso**
- ◆ **Condroma de partes moles**

***Fibroma
aponeurótico
calcificante***

Fibroma aponeurótico calcificante

- ◆ 1953 – Fibroma aponeurótico juvenil
- ◆ Menos de 150 casos na literatura

TABLE 10-1 CLINICOPATHOLOGIC CHARACTERISTICS OF FIBROUS TUMORS OF INFANCY AND CHILDHOOD

Histologic diagnosis	Age (years)	Location	Solitary	Multiple	Regression
Fibrous hamartoma	B-2	Axilla, inguinal area	+	-	-
Digital fibromatosis	B-2	Fingers, toes	+	+	+
Myofibromatosis	B-A	Soft tissue, bone, viscera	+	+	+
Hyaline fibromatosis	2-A	Dermis, subcutis	-	+	-
Gingival fibromatosis	B-A	Gingiva, hard palate	+	+	+
Fibromatosis colli	B-2	Sternocleidomastoid muscle	+	Bilateral	+
Infantile fibromatosis	B-4	Musculature	+	-	-
Congenital/infantile fibrosarcoma	B-2	Musculature	+	-	-
Calcifying aponeurotic fibroma	2-A	Hands, feet	+	-	+

A, adult life; B, birth.

Achados clínicos

- ◆ Crianças; 8-14 anos
- ◆ Massa dolorosa, crescimento lento
- ◆ Mãos (palma e dedos) e pés
- ◆ Infiltrativa; recorrência local



Diagnósticos diferenciais

- ◆ **Fibromatose infantil**
- ◆ **Fibromatose palmar**
- ◆ **Sarcoma sinovial tipo fibroso**
- ◆ **Condroma de partes moles**

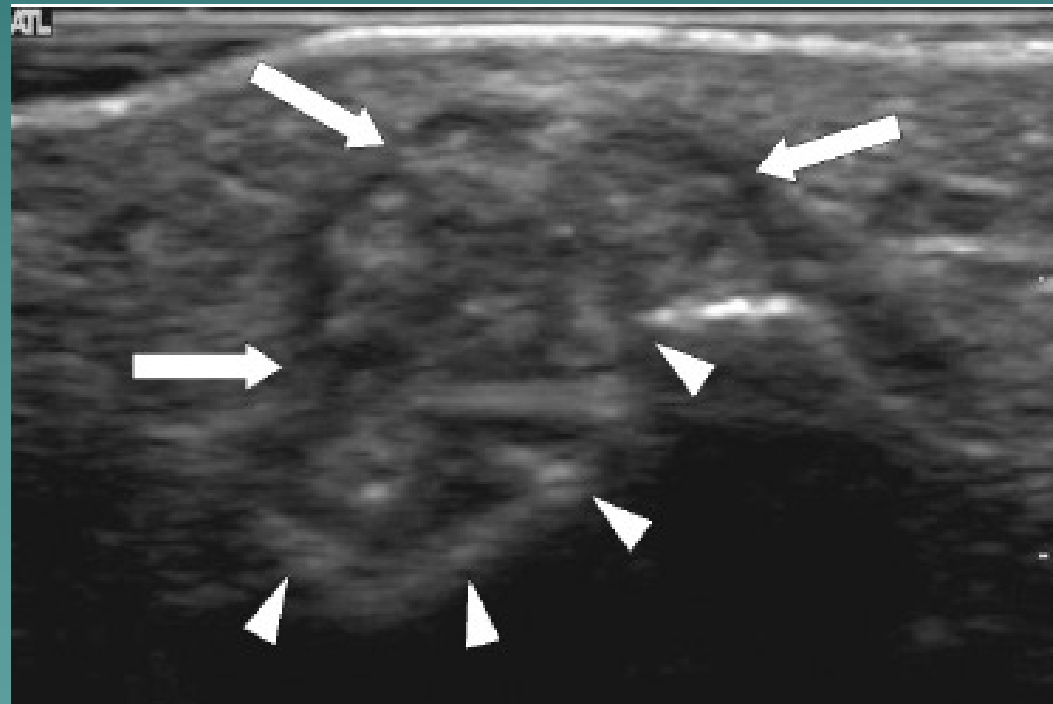
Prognóstico

- ◆ **Alto índice de recorrência local(1m a 11 a)**
 - em geral em pacientes jovens(< 5 anos)-
- ◆ **Raríssimos casos de malignização**
 - ◆ **Cirurgias conservadoras**

1: [Korean J Radiol](#). 2008 Jan-Feb;9(1):91-3. [Links](#)

Calcifying aponeurotic fibroma with osseous involvement of the finger: a case report with radiologic and US findings.

[Choi SJ](#), [Ahn JH](#), [Kang G](#), [Lee JH](#), [Park MS](#), [Ryu DS](#), [Jung SM](#).





1: [Diagn Cytopathol](#). 2001 May;24(5):336-9.

Calcifying aponeurotic fibroma features seen on fine-needle aspiration biopsy: case report and brief review of the literature.

[Tai LH](#), [Johnston JO](#), [Klein HZ](#), [Rowland J](#), [Sudilovsky D](#).

[Department of Pathology, University of California at San Francisco, San Francisco, California, USA.](#)



1: [Histopathology](#). 2007 Oct;51(4):509-14. Epub 2007 Aug 17.

Immunohistochemistry for beta-catenin in the differential diagnosis of spindle cell lesions: analysis of a series and review of the literature.

[Carlson JW](#), [Fletcher CD](#).

[Department of Pathology, Brigham and Women's Hospital and Harvard Medical School, Boston, MA 02115, USA.](#)