

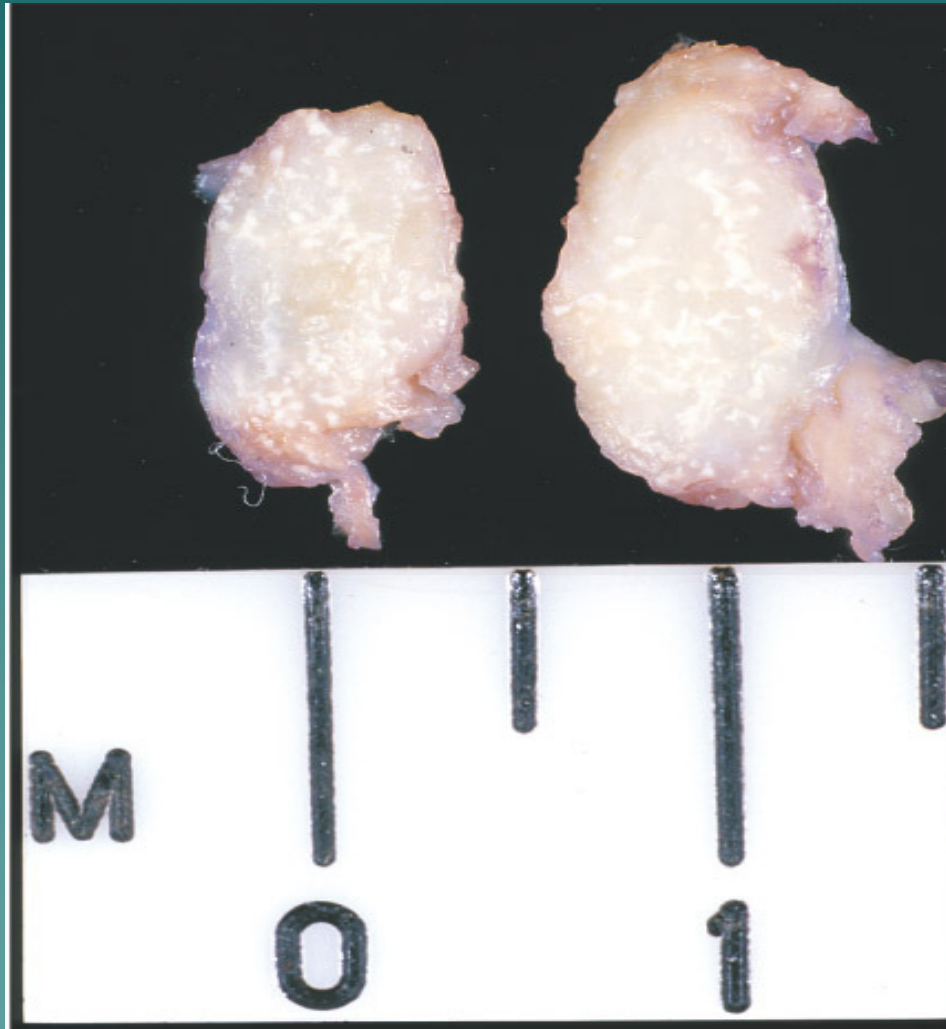
# Caso do Mês

**Rodrigo Neves Ferreira  
Allan Kardec de Castro Neto  
HSRC-VITÓRIA-ES**

# Dados clínicos

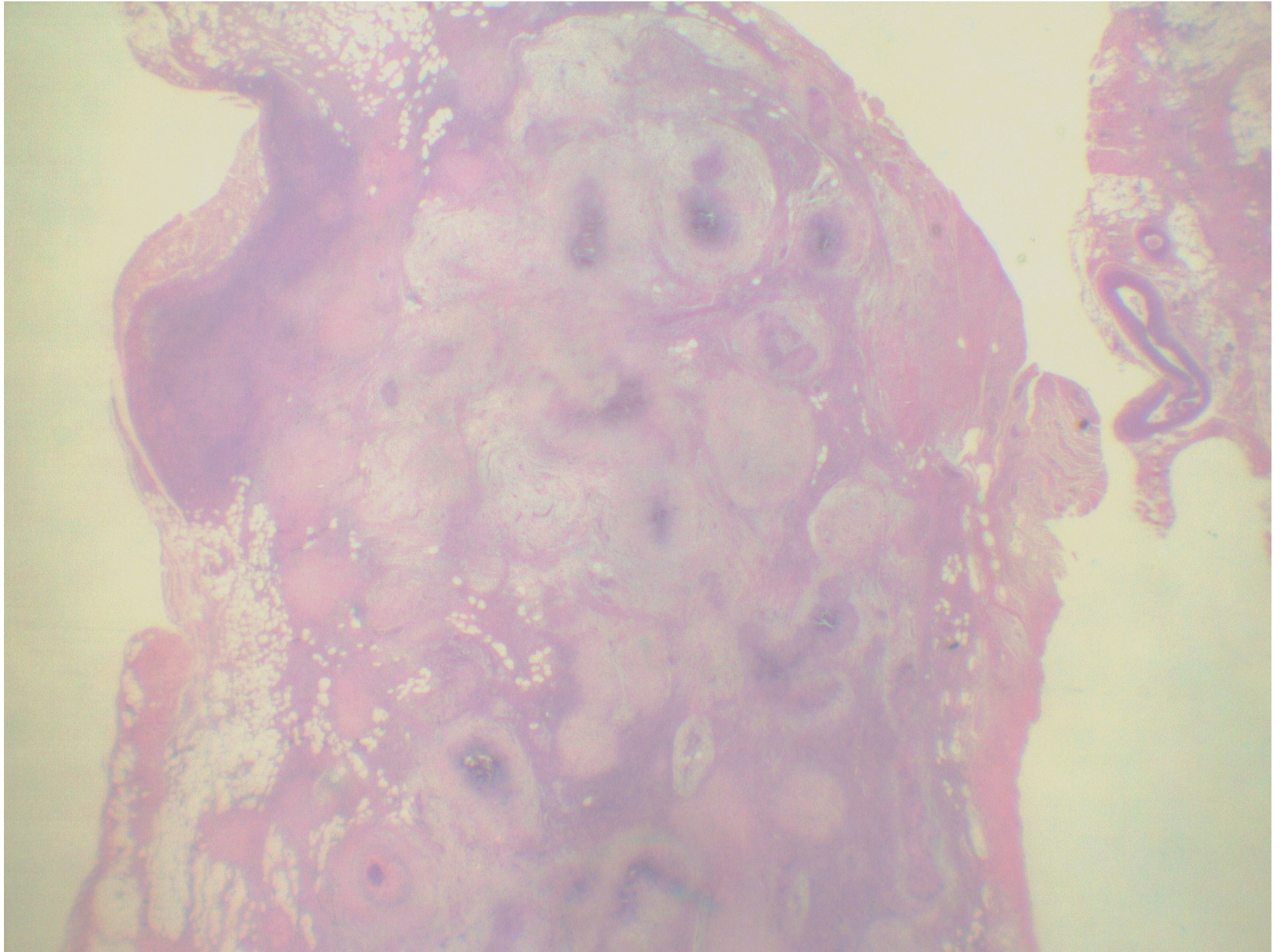
- ◆ Feminino, 9 anos, tumor aderido em extensor ulnar do carpo
- ◆ Dorso de mão esquerda

# Macroscopia

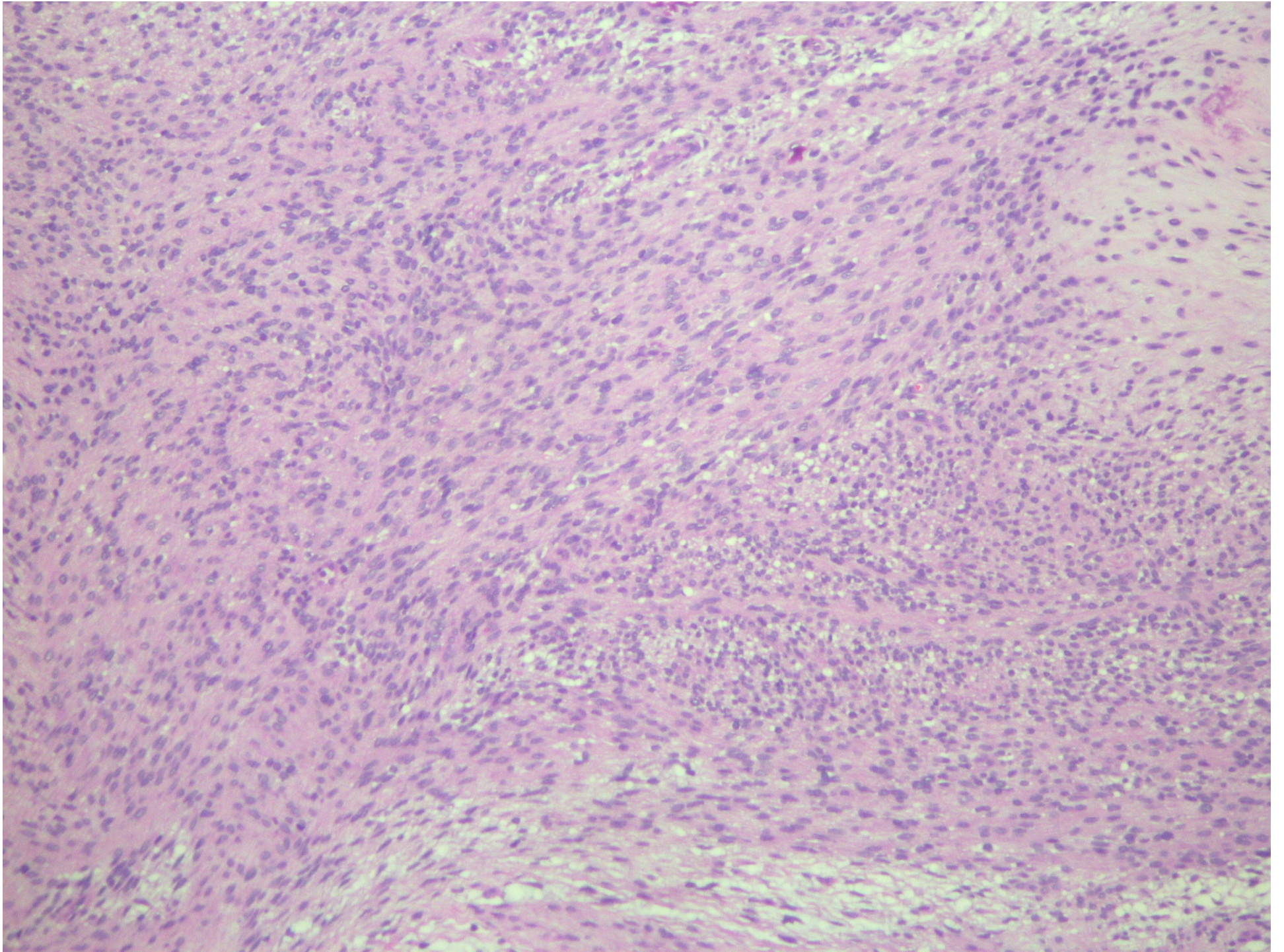


008 Weiss and Goldblum. *Enzinger and Weiss's Soft Tissue T*

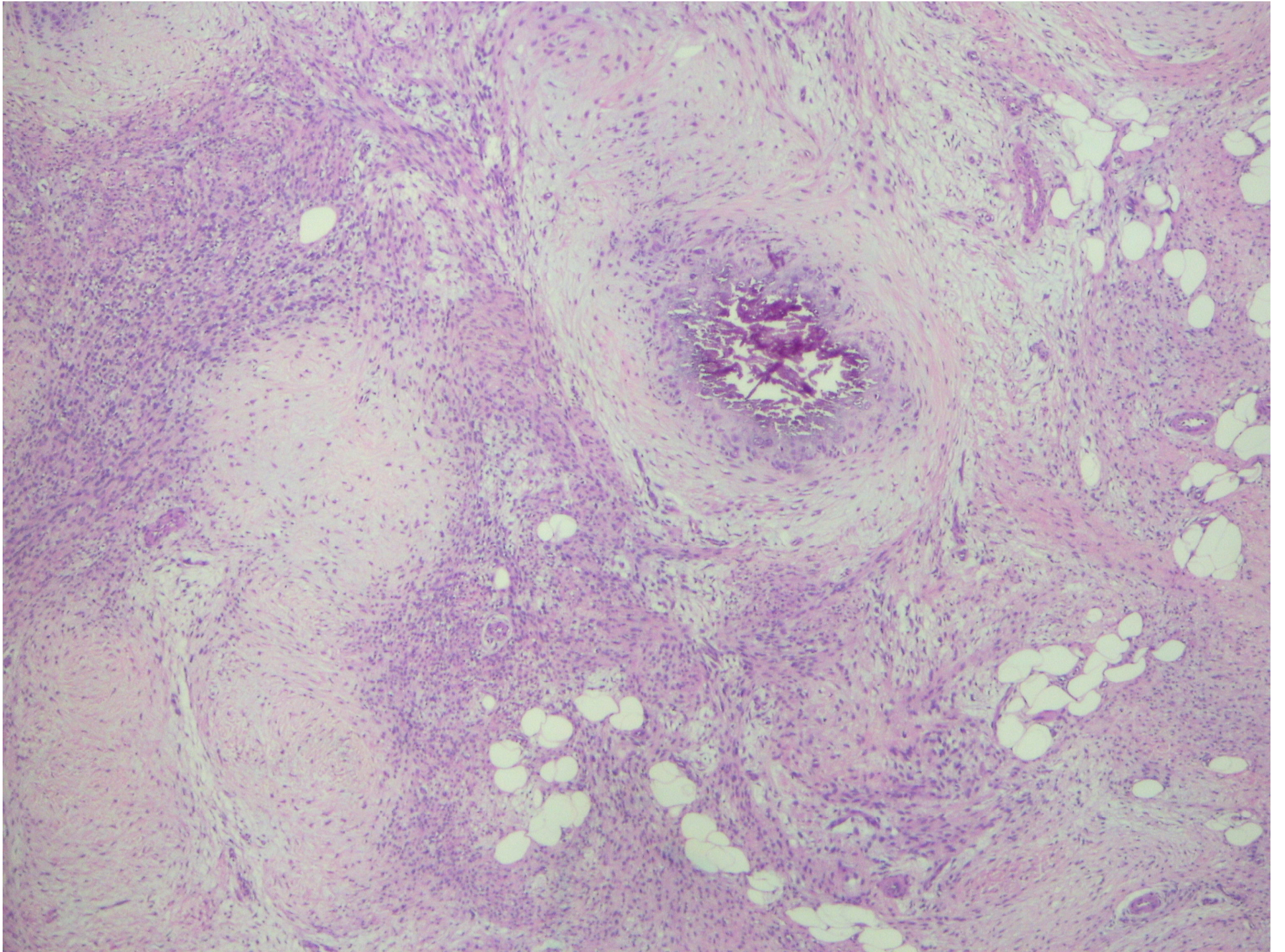




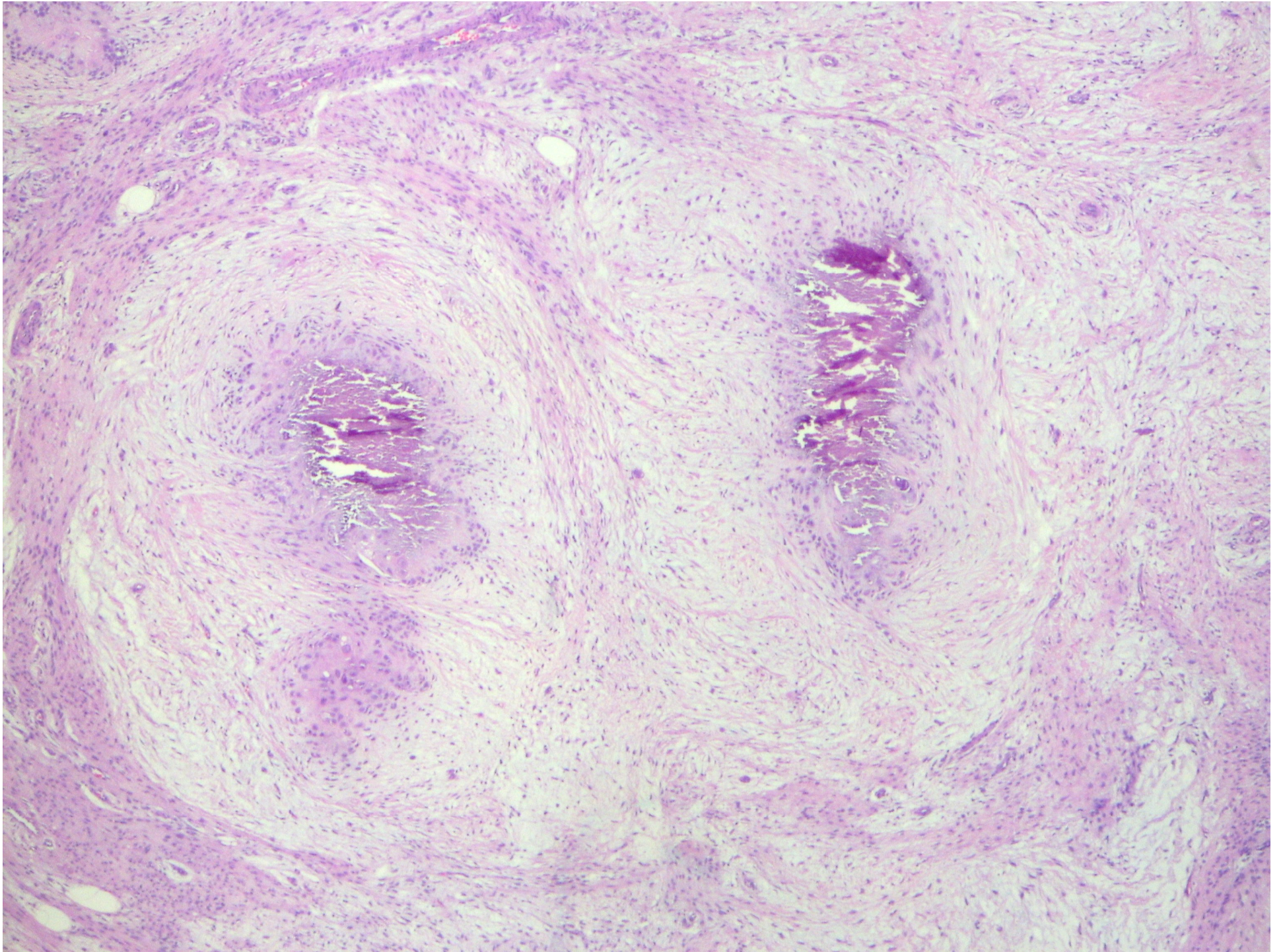




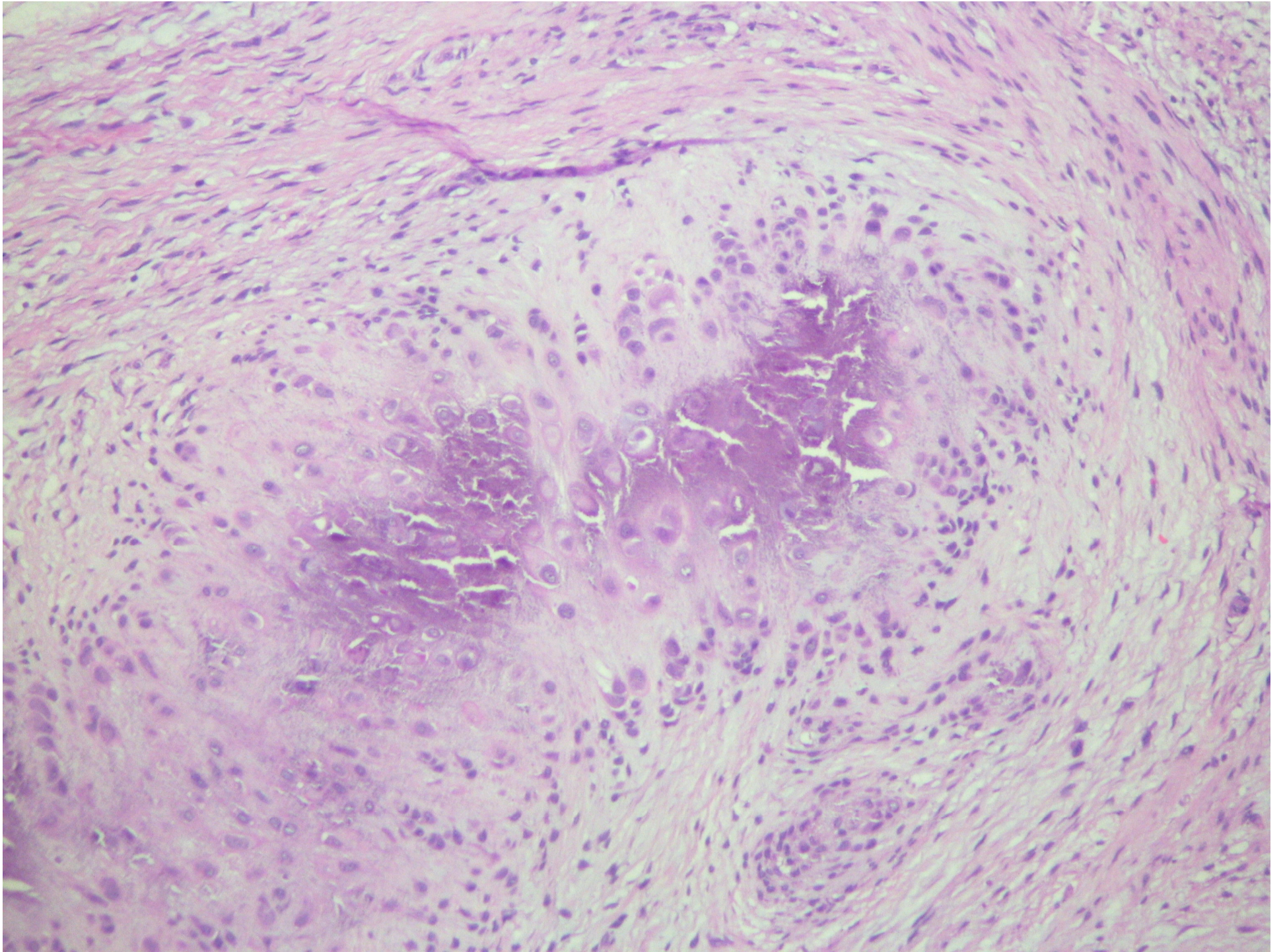




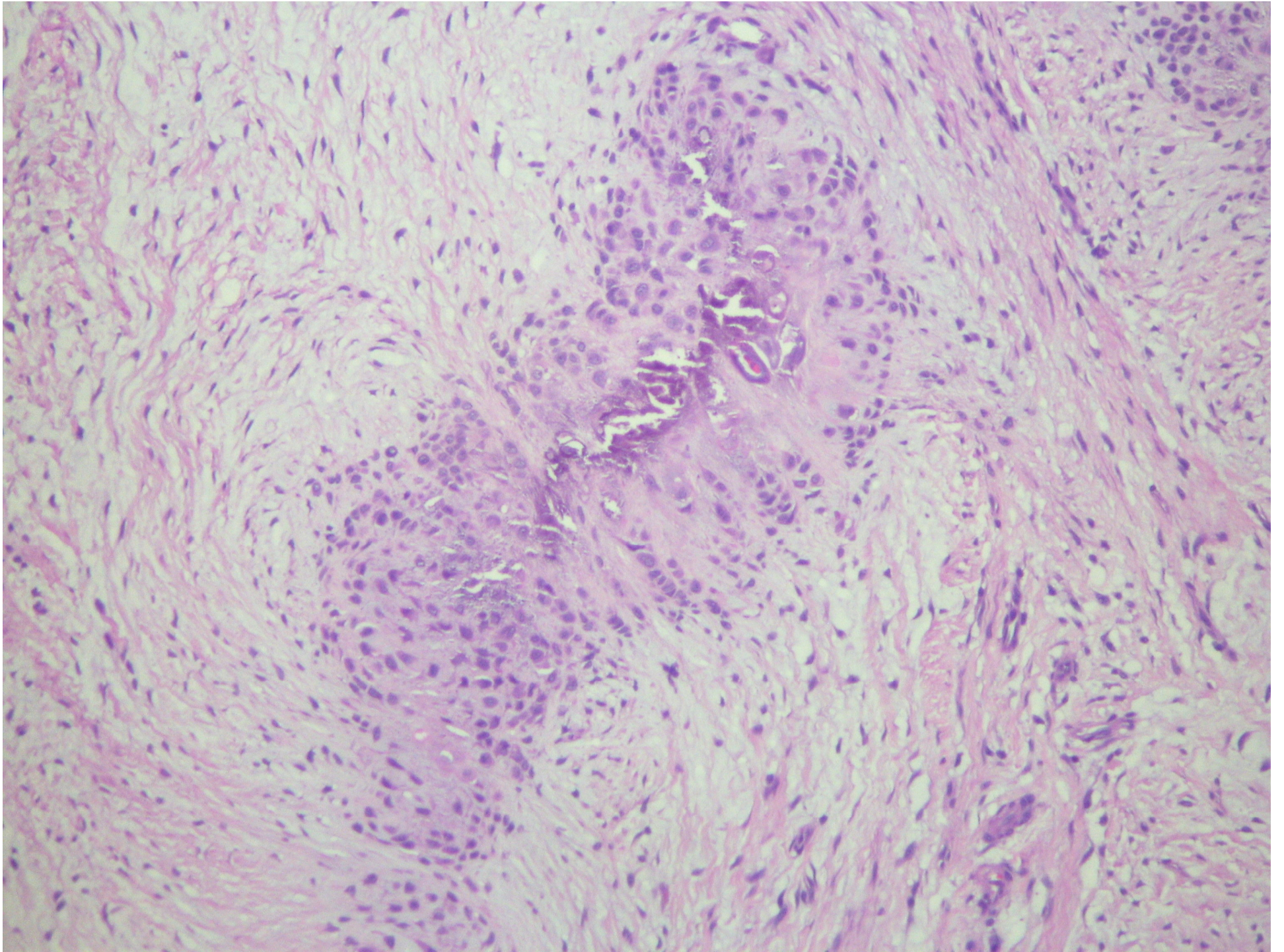




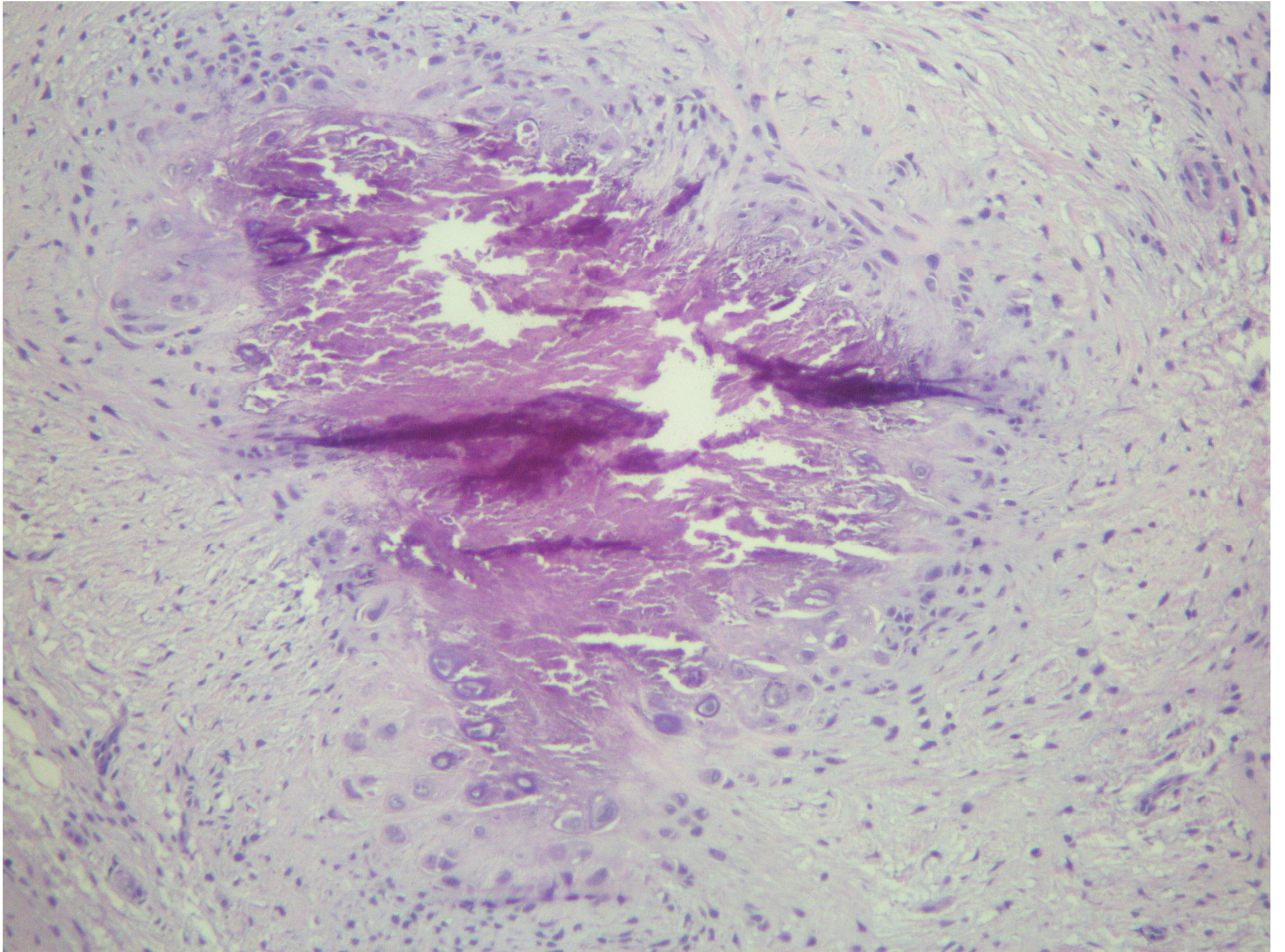




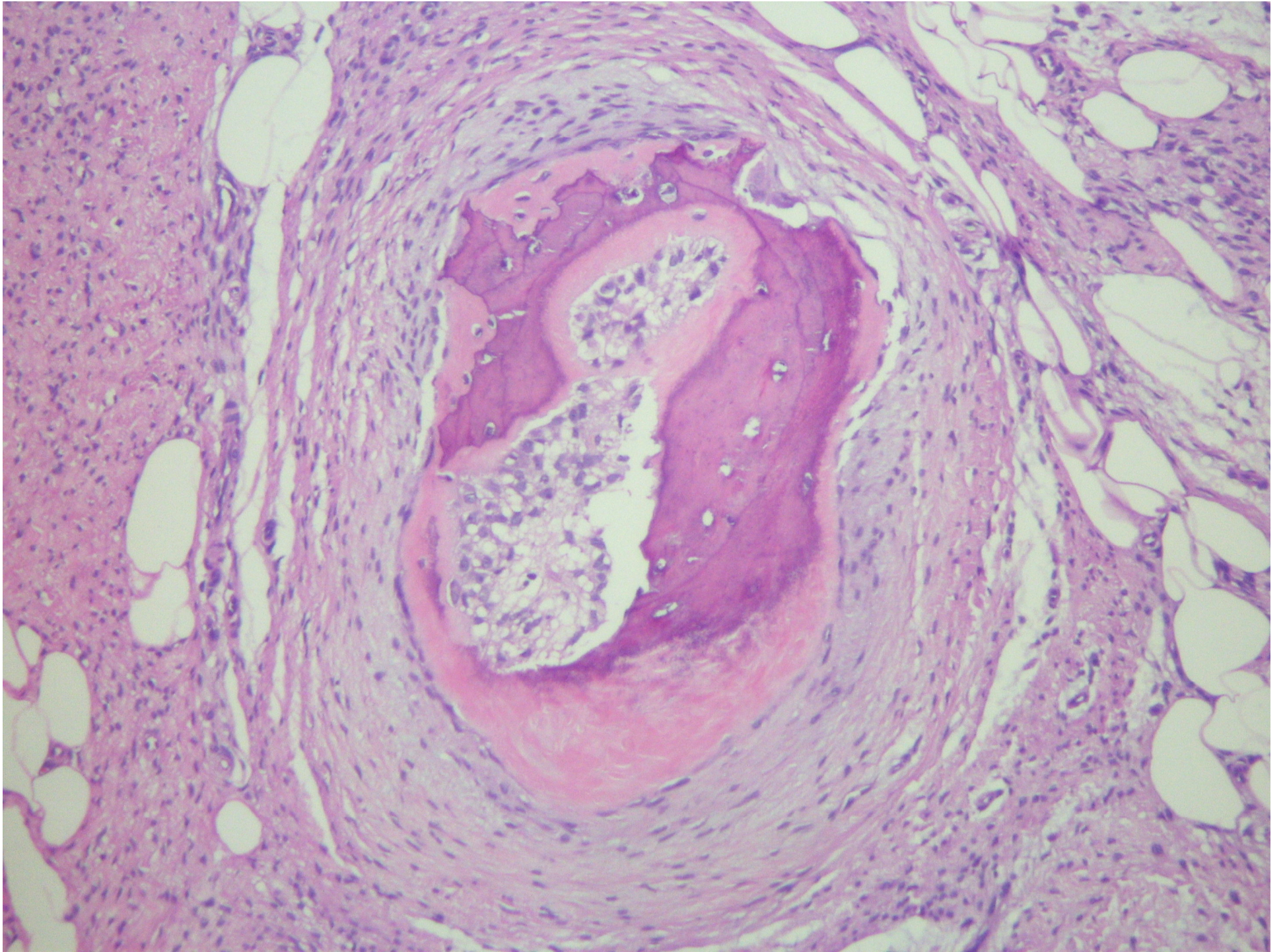




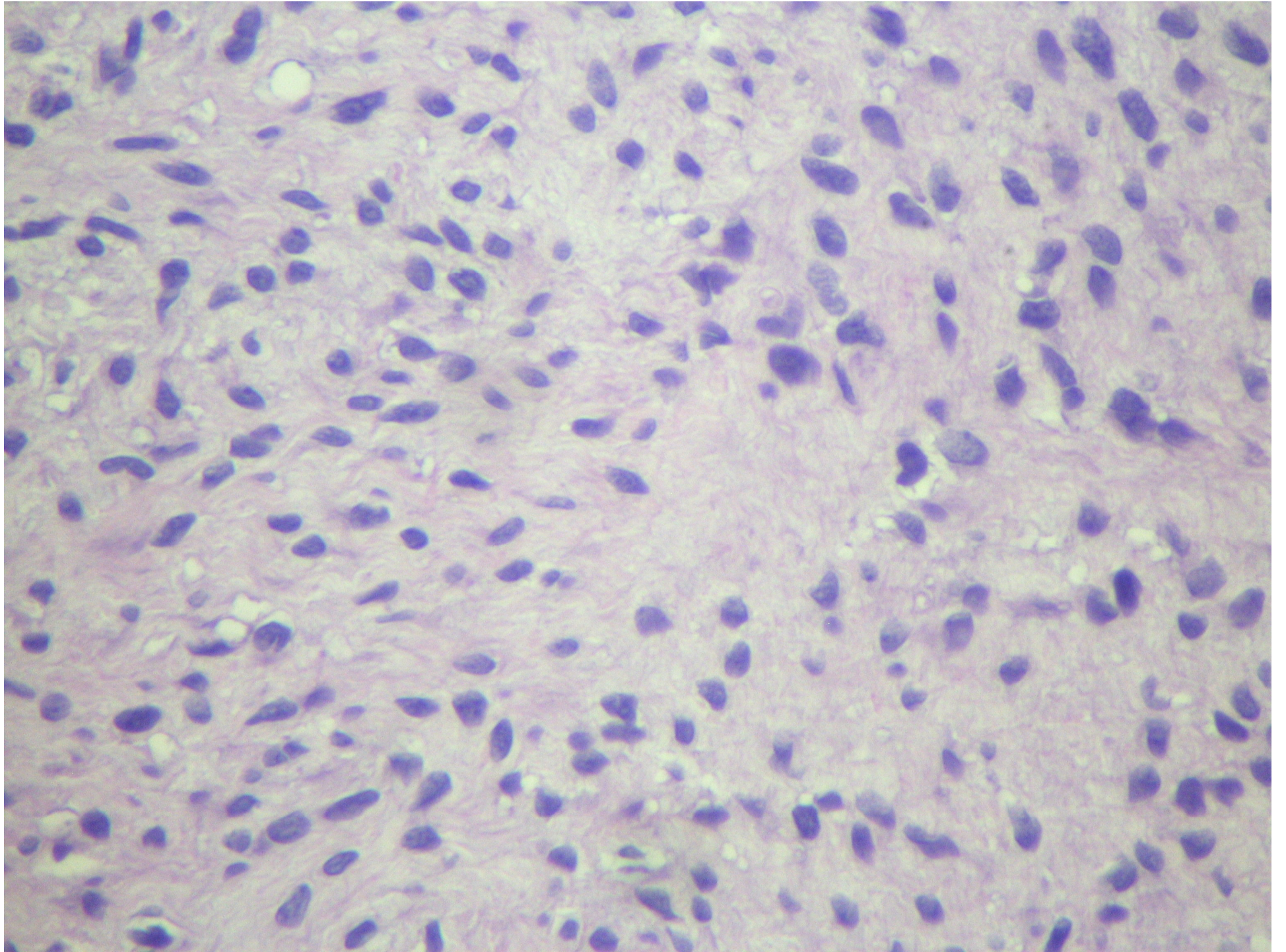




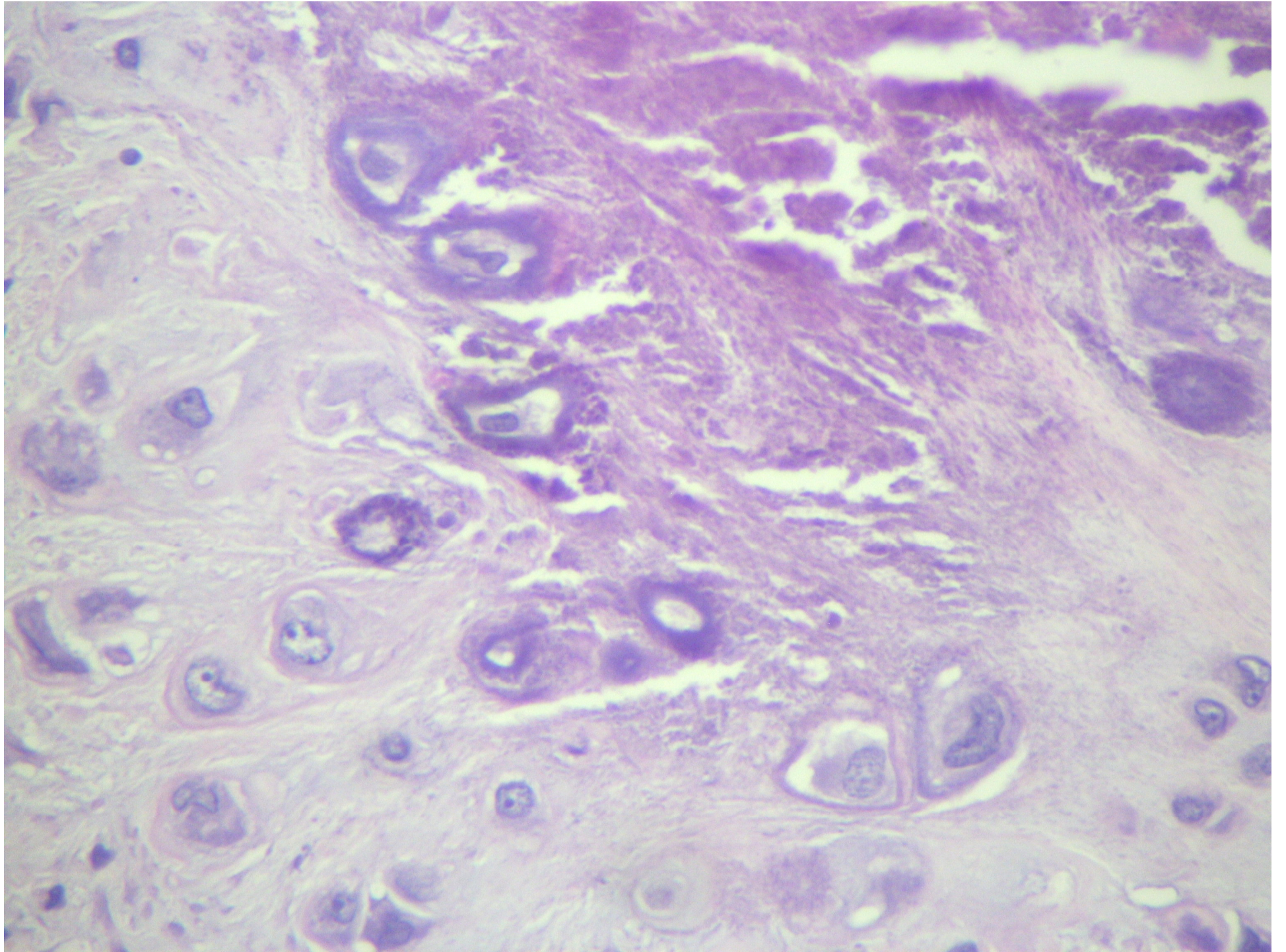




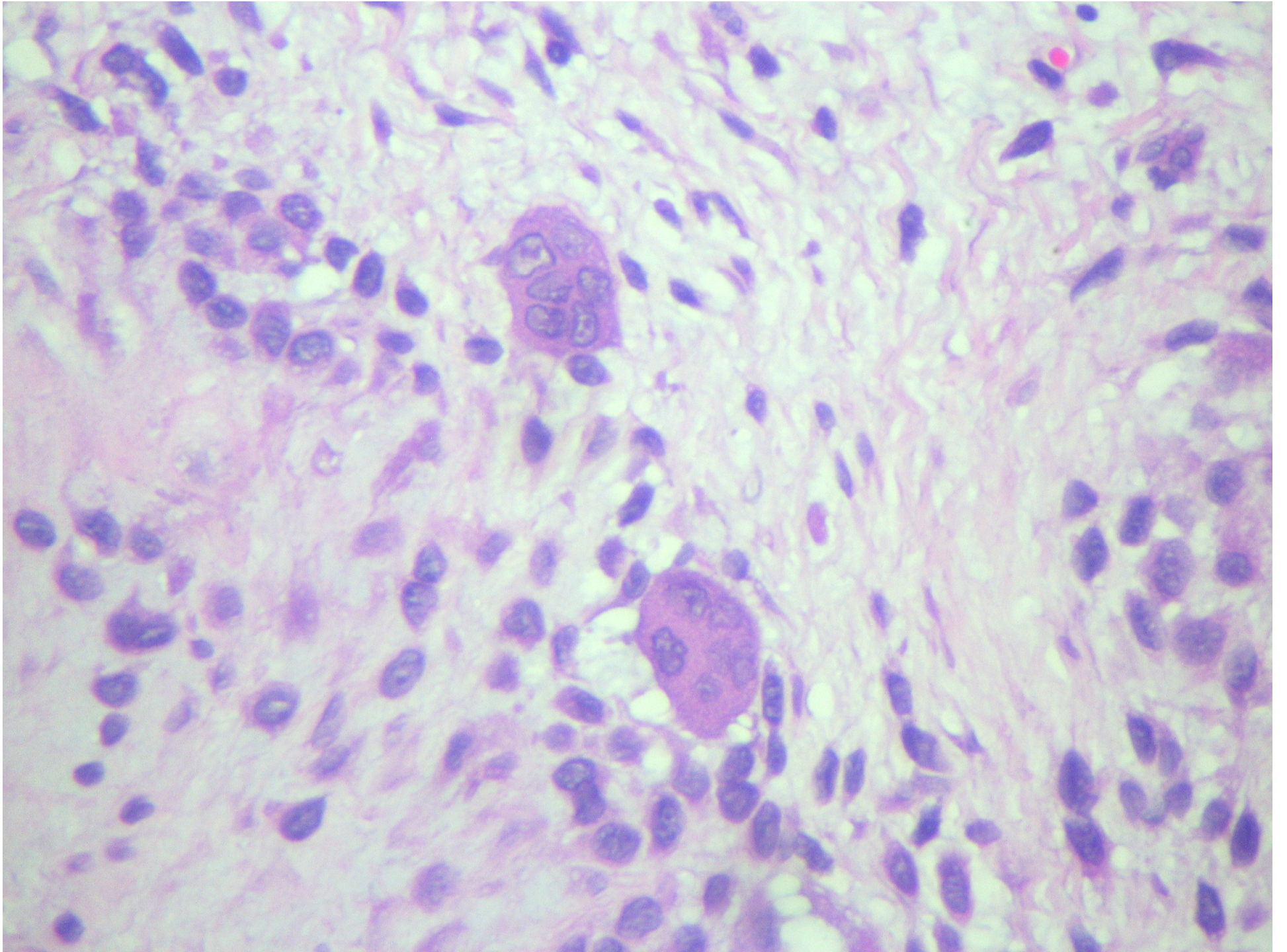












# Qual é seu diagnóstico?

- ◆ **Fibromatose infantil**
- ◆ **Fibromatose palmar**
- ◆ **Fibroma aponeurótico calcificante**
- ◆ **Sarcoma sinovial tipo fibroso**
- ◆ **Condroma de partes moles**



# CASO DO MÊS



*Agradecemos  
a sua  
participação*