

CASO DO MÊS



Dra. Catarina Shaletich

Ribeirão Preto – SP

➤ **DADOS CLÍNICOS**

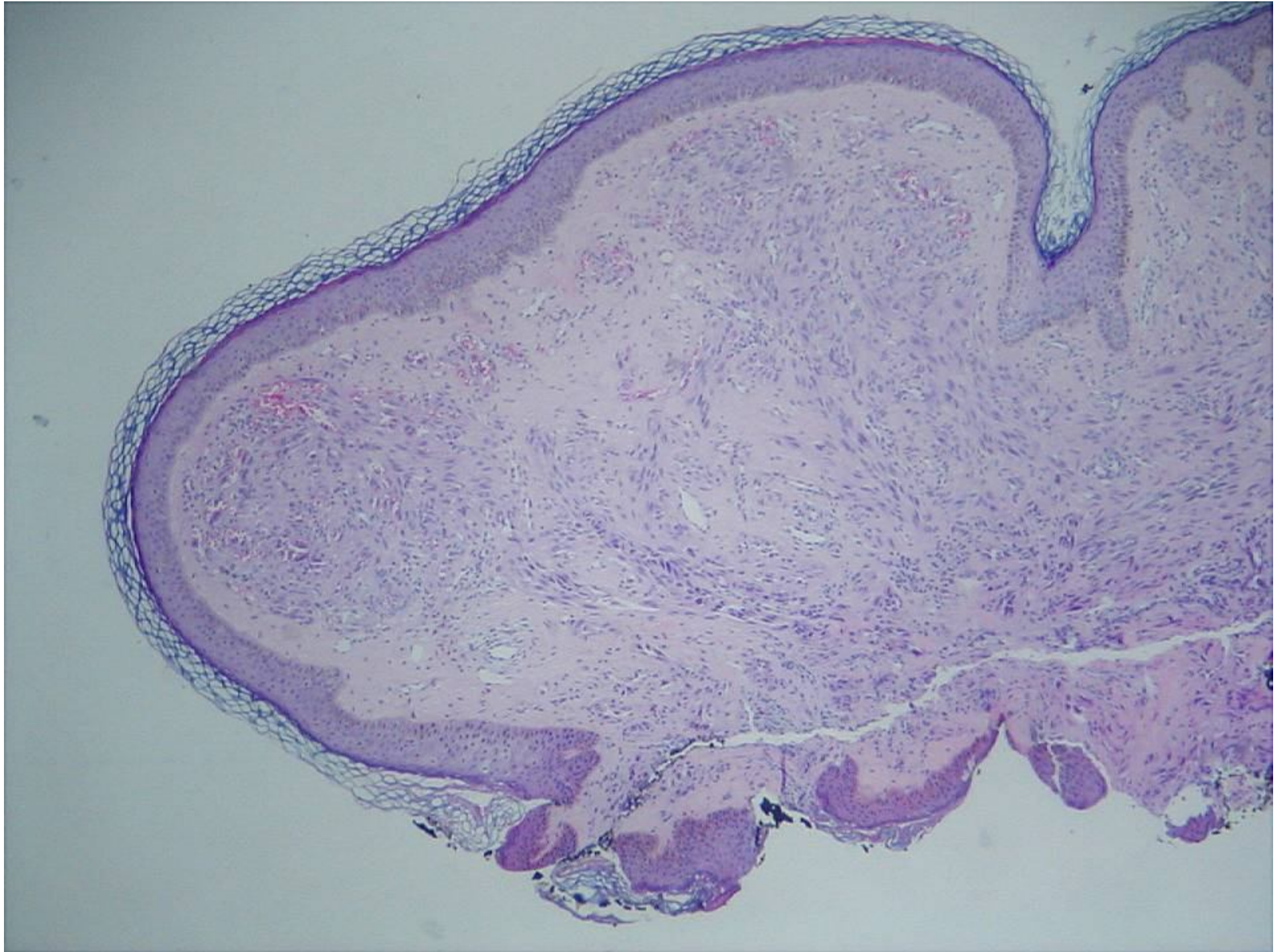


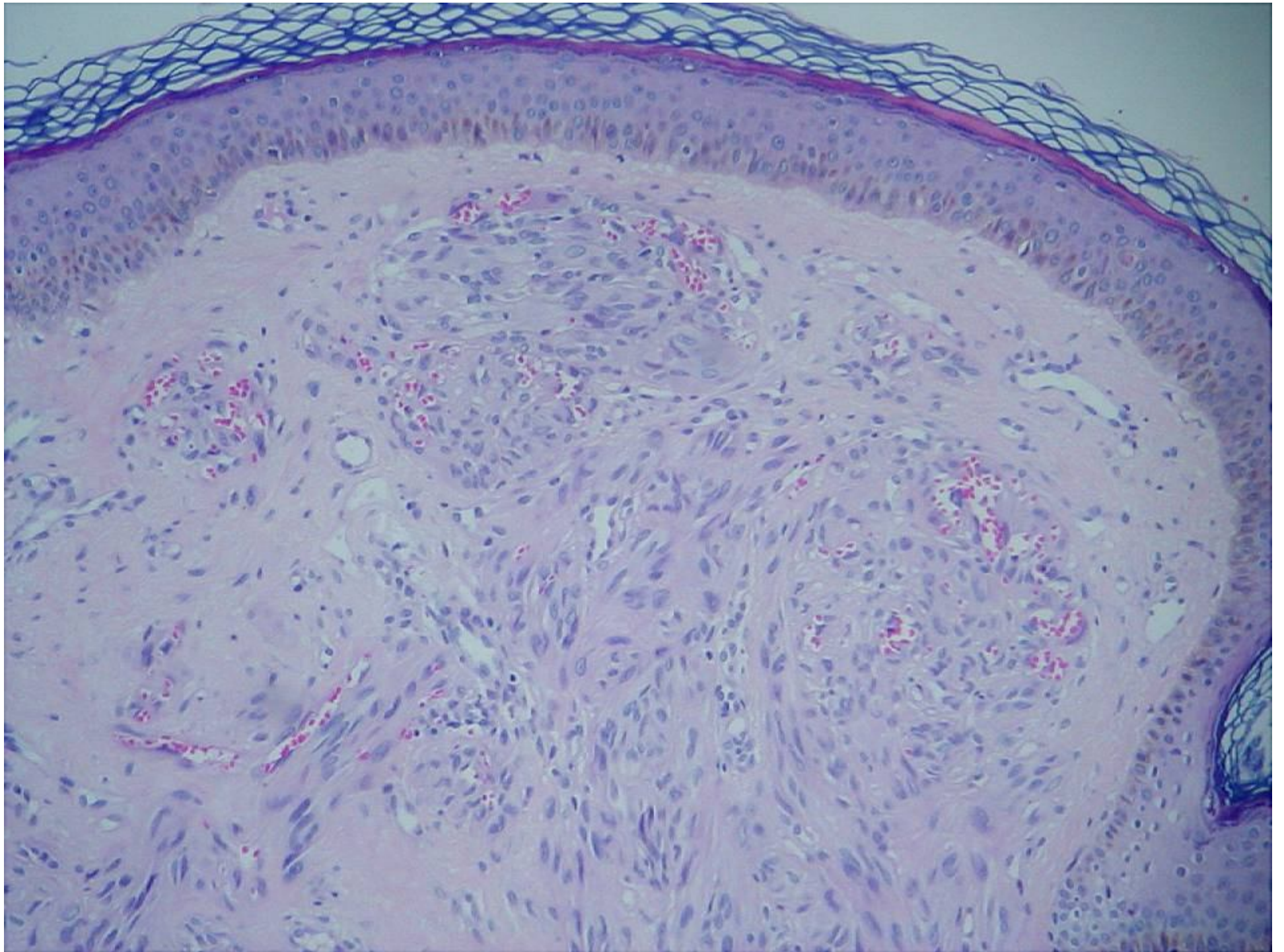
Paciente feminina, 14 anos de idade.

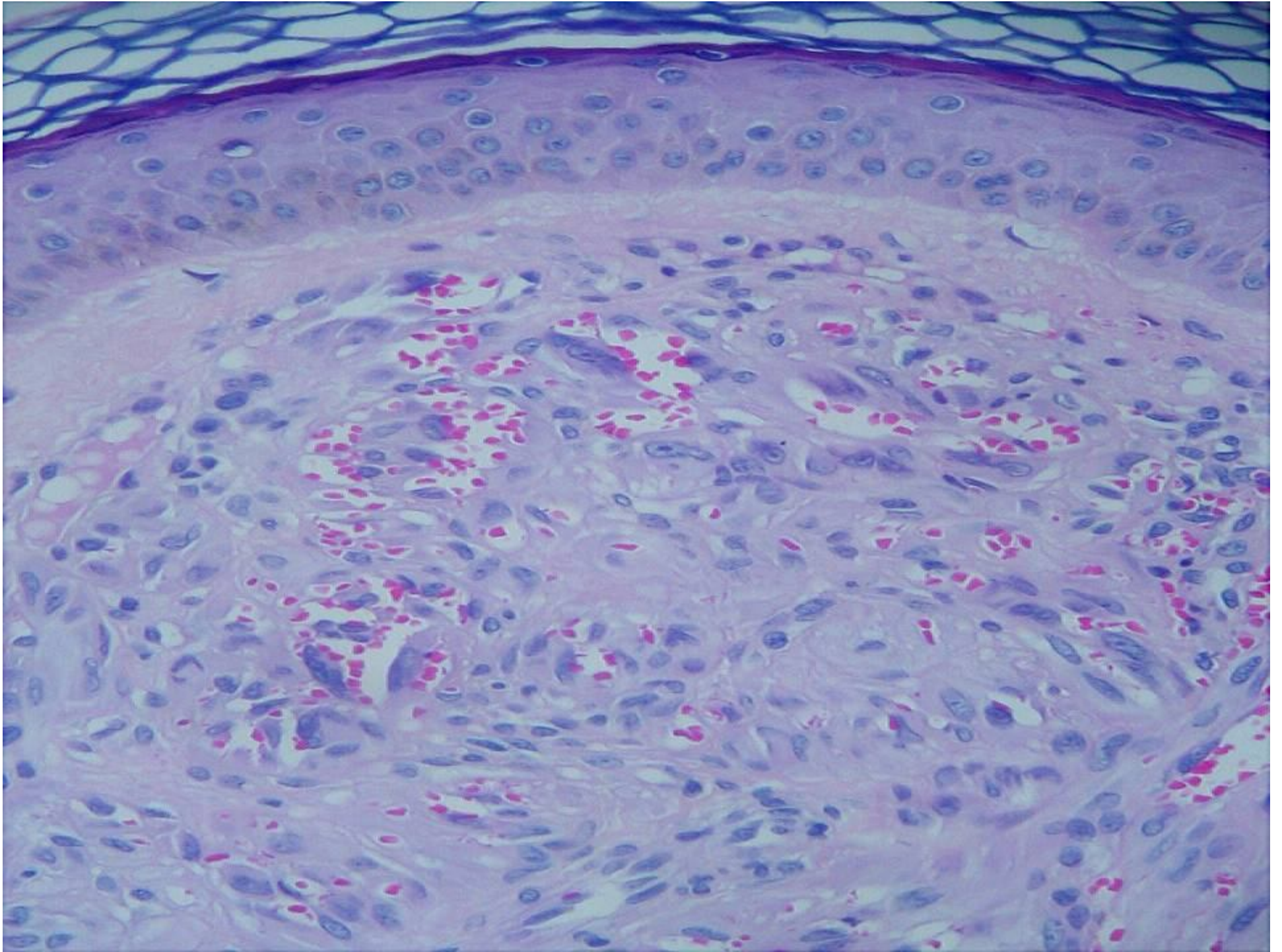


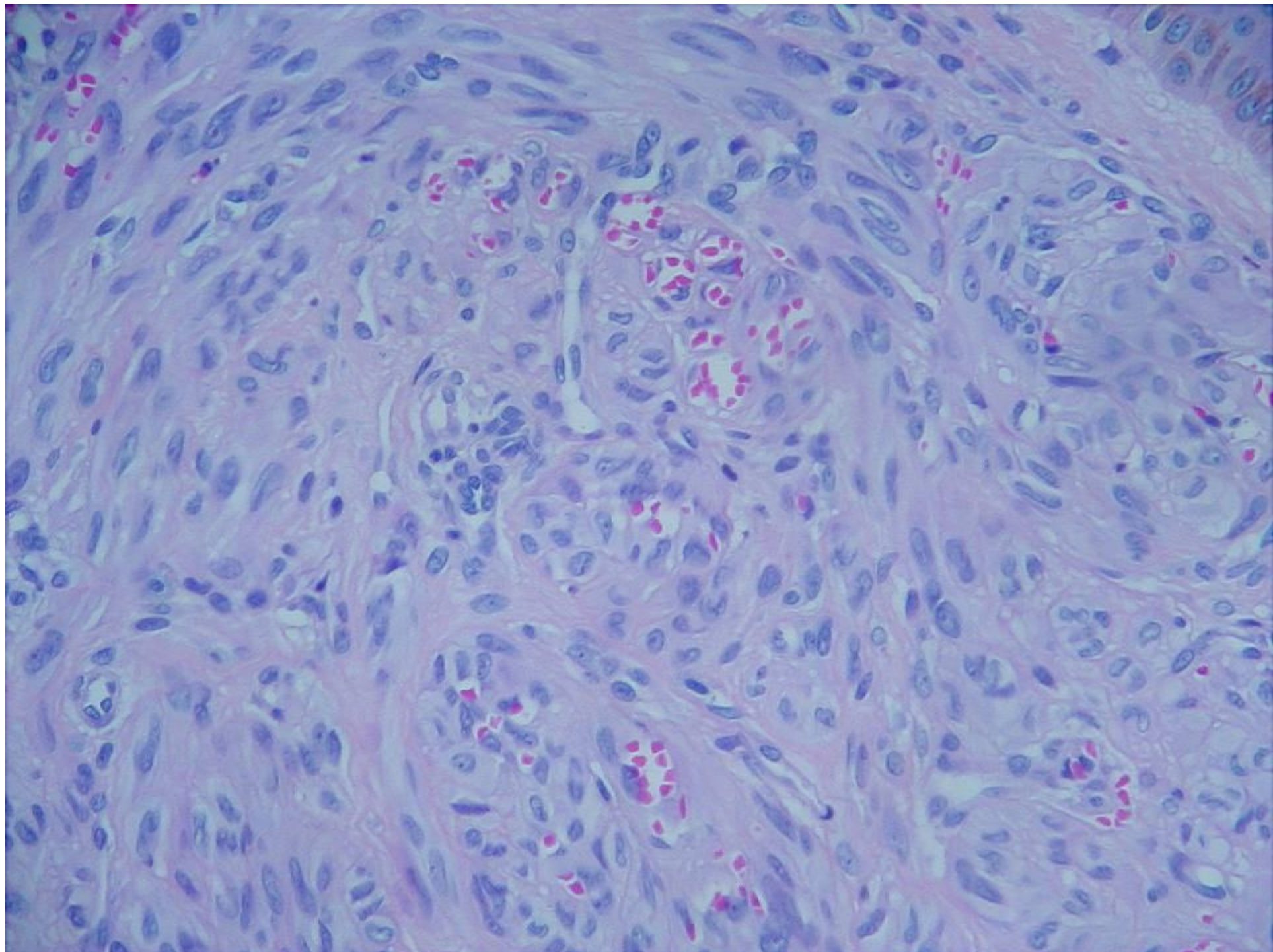
"Lesão vegetante cervical há 1 ano. Nevus?"

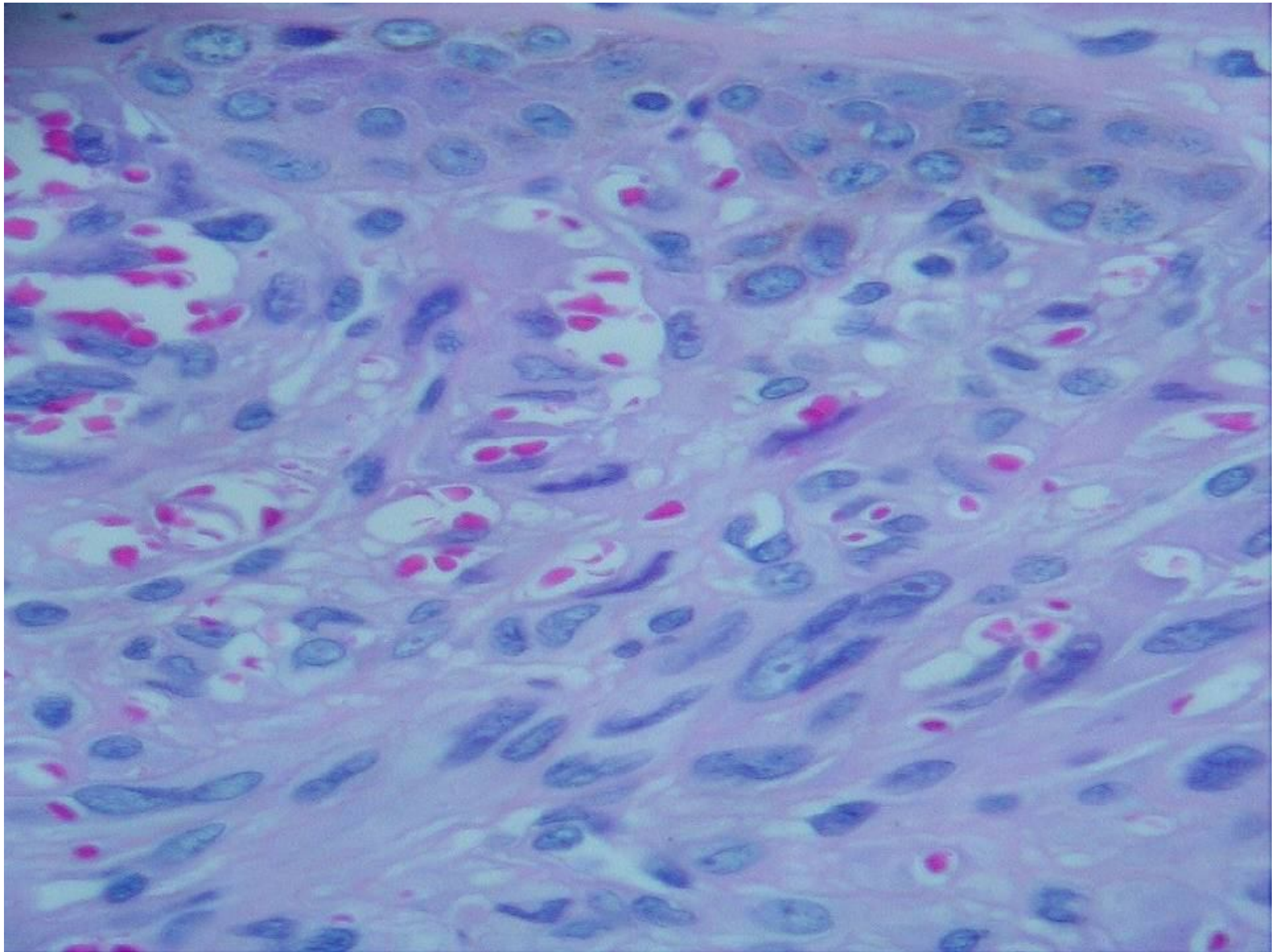


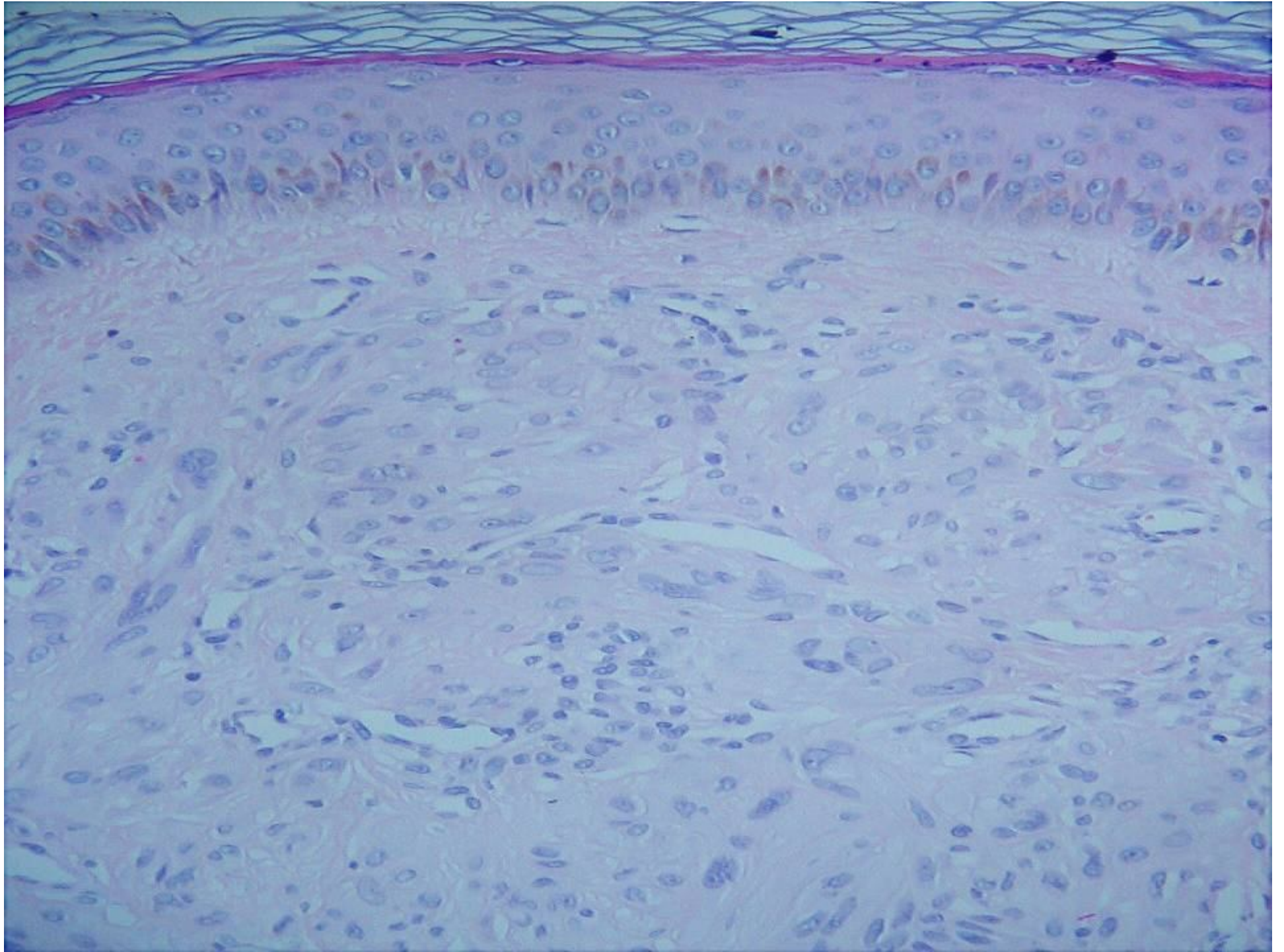


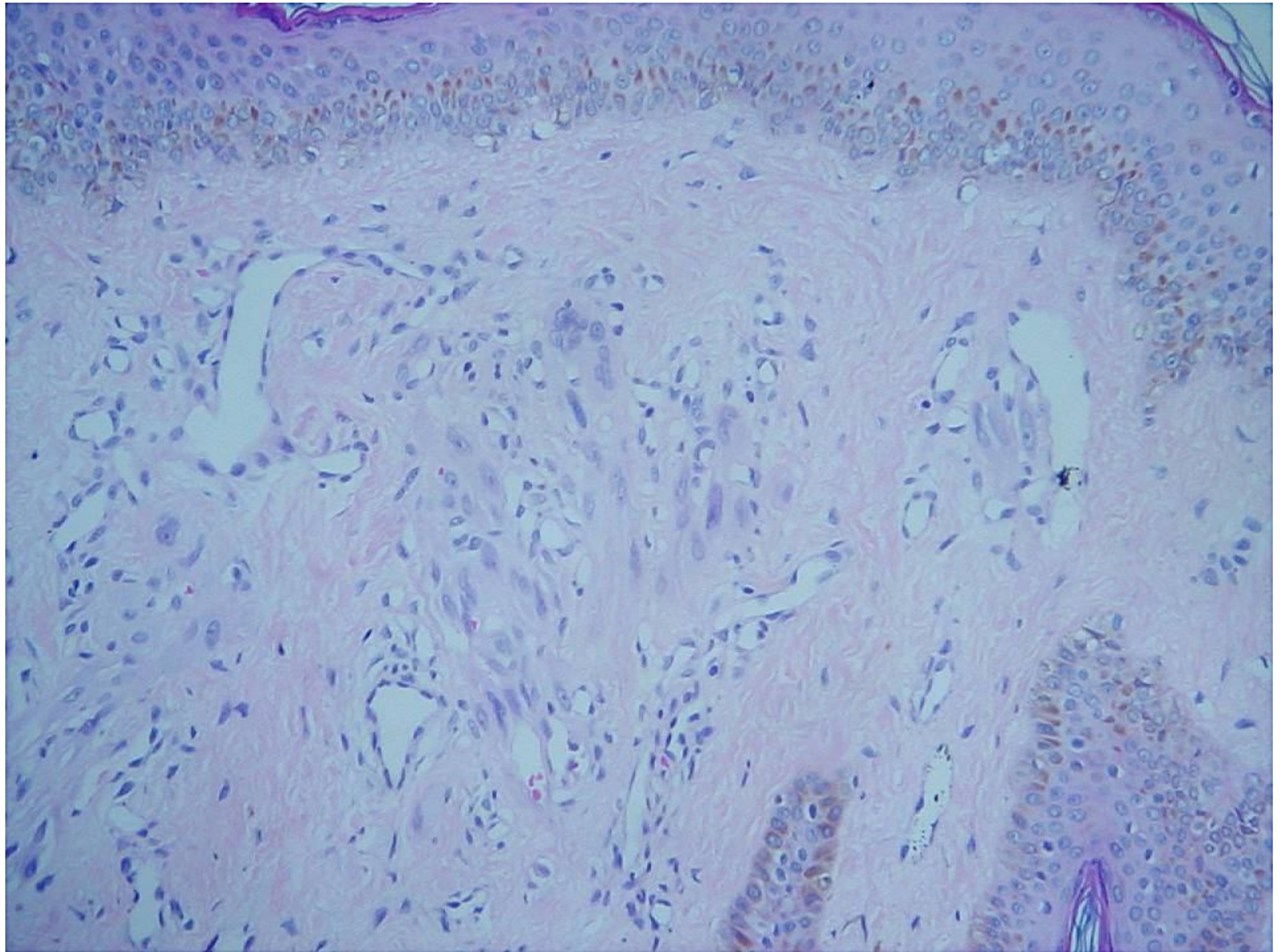












➤ Considerando:



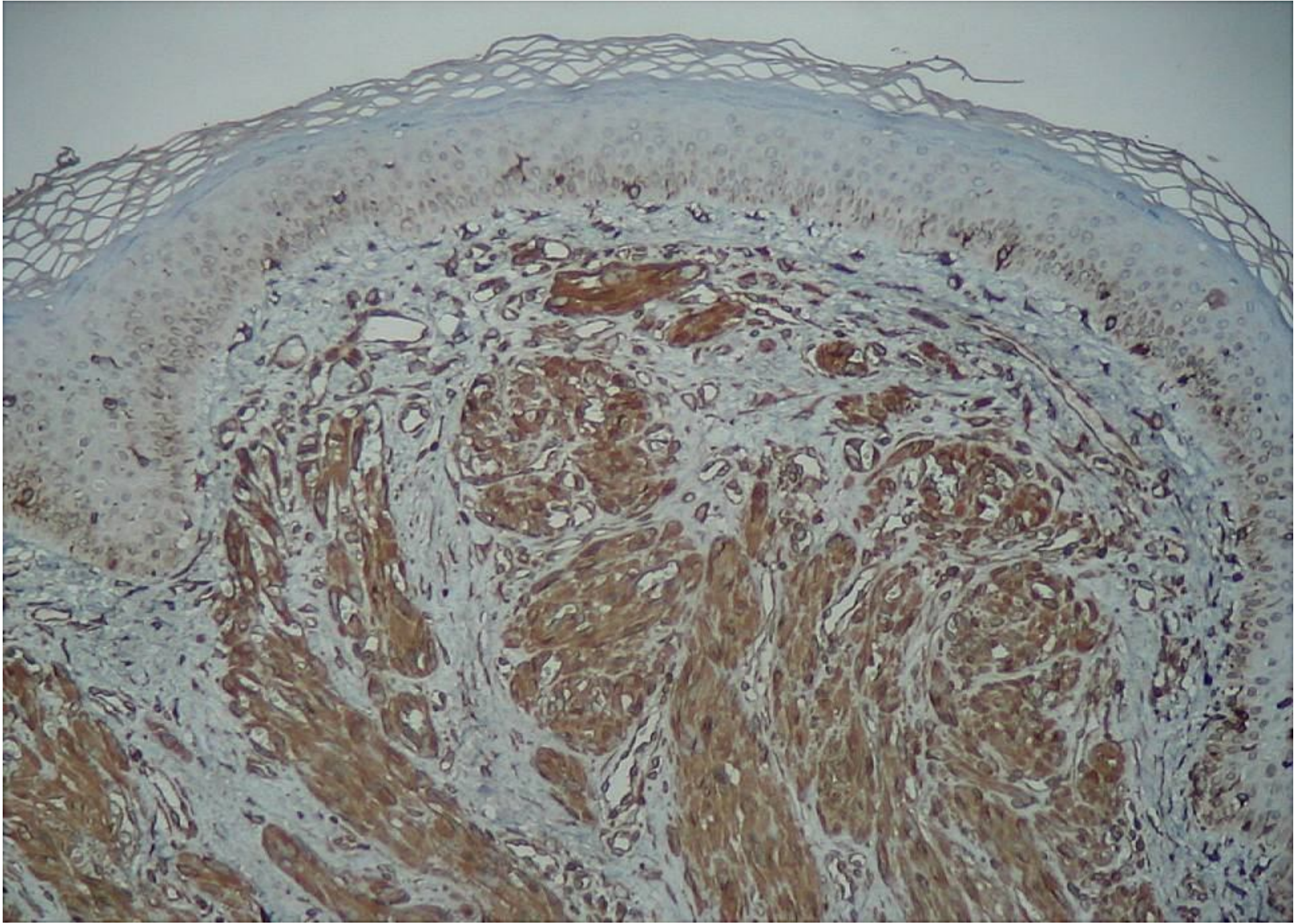
➤ - *neoplasia fusocelular*

➤ - *vasos numerosos*

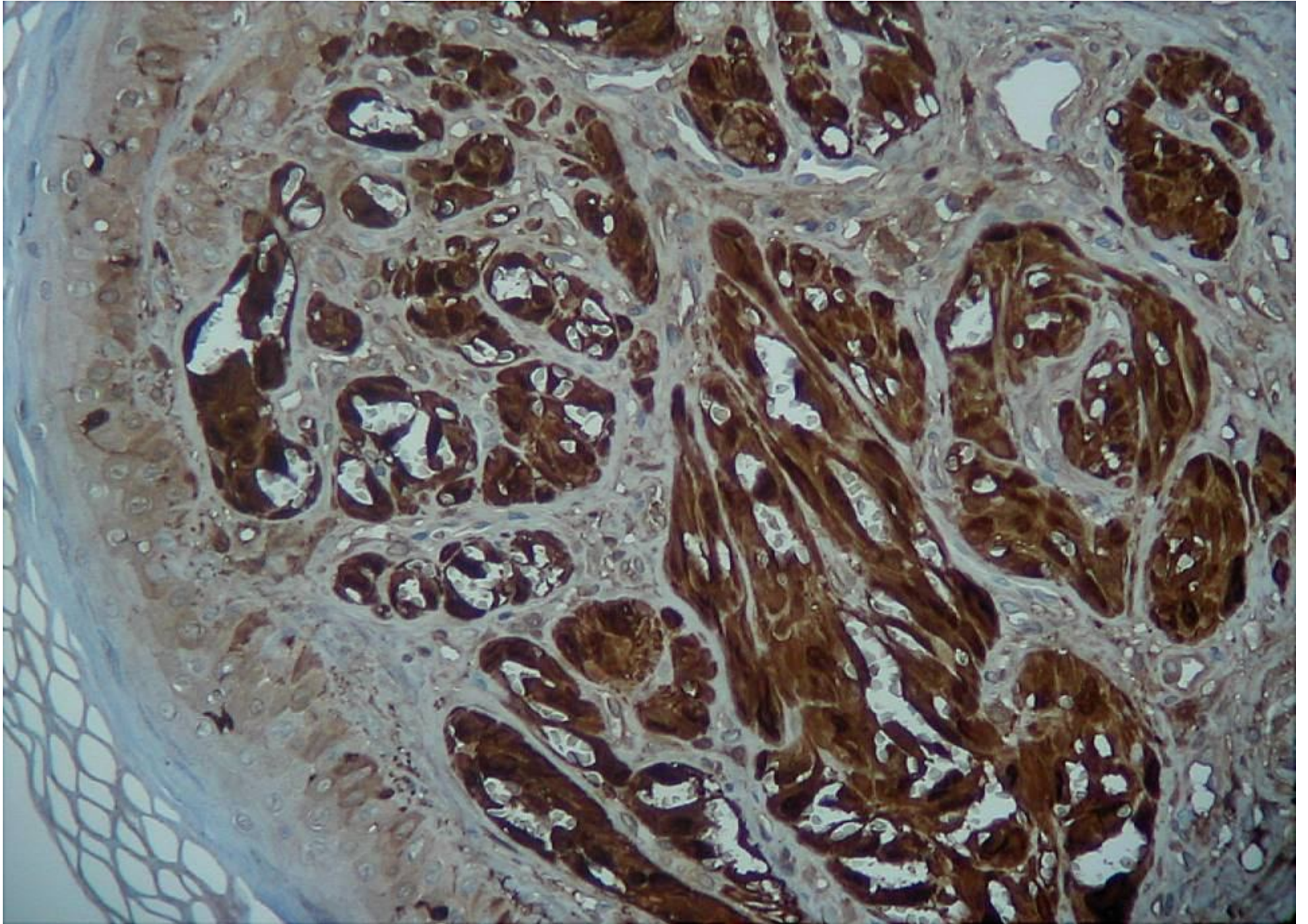
➤ - *idade da paciente*



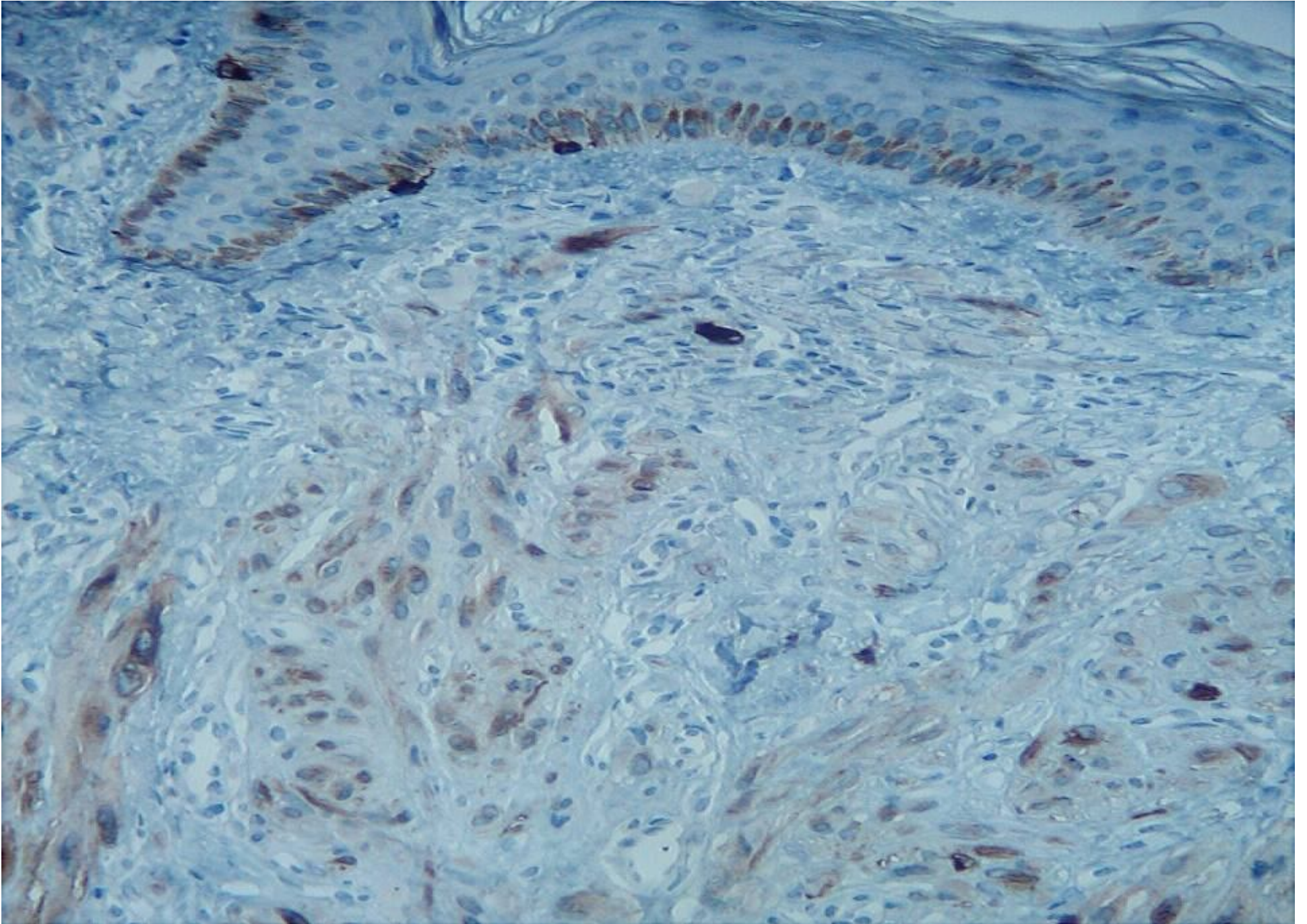
➤ >>>>>>> *avaliação imuno-histoquímica*



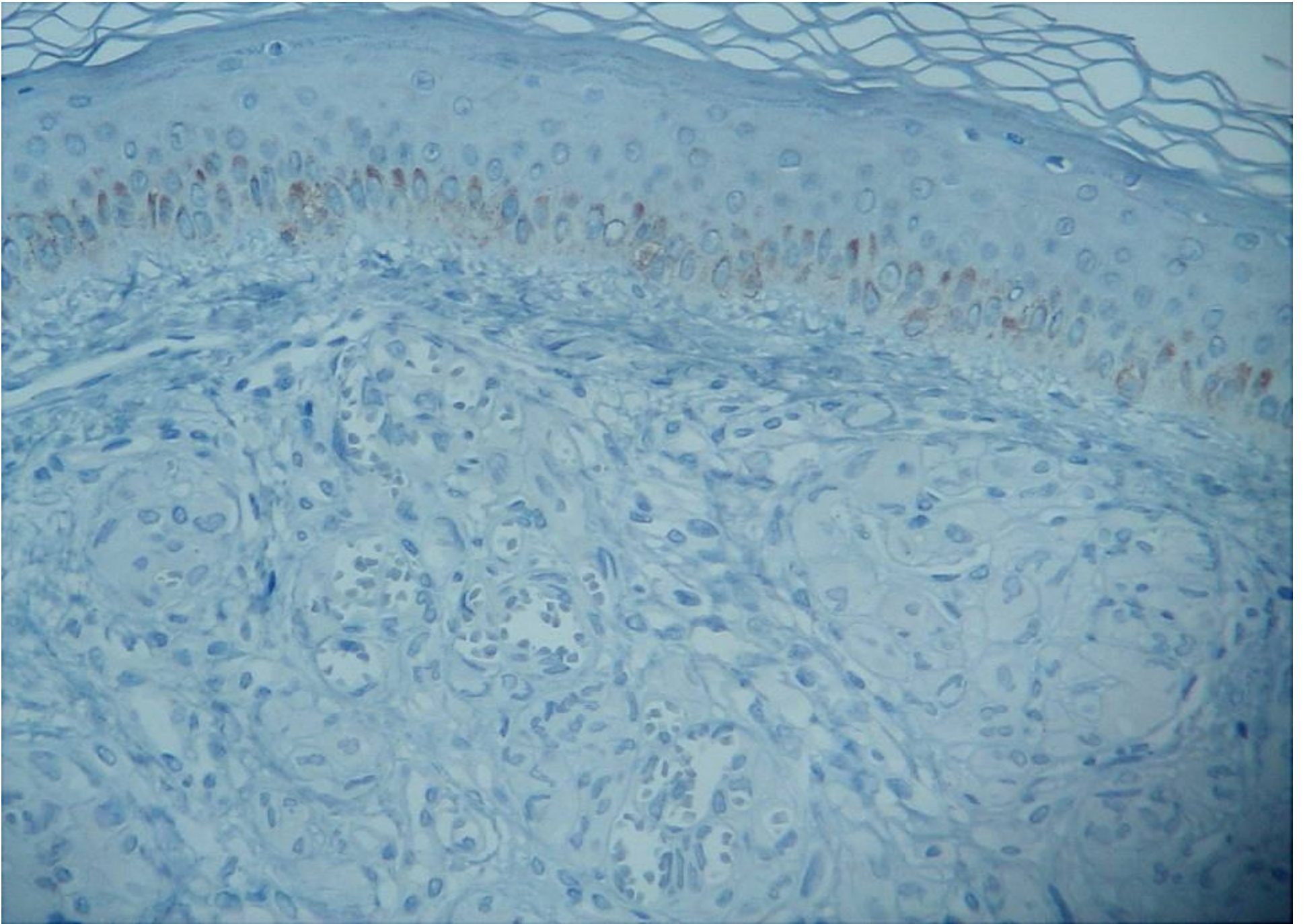
- vim



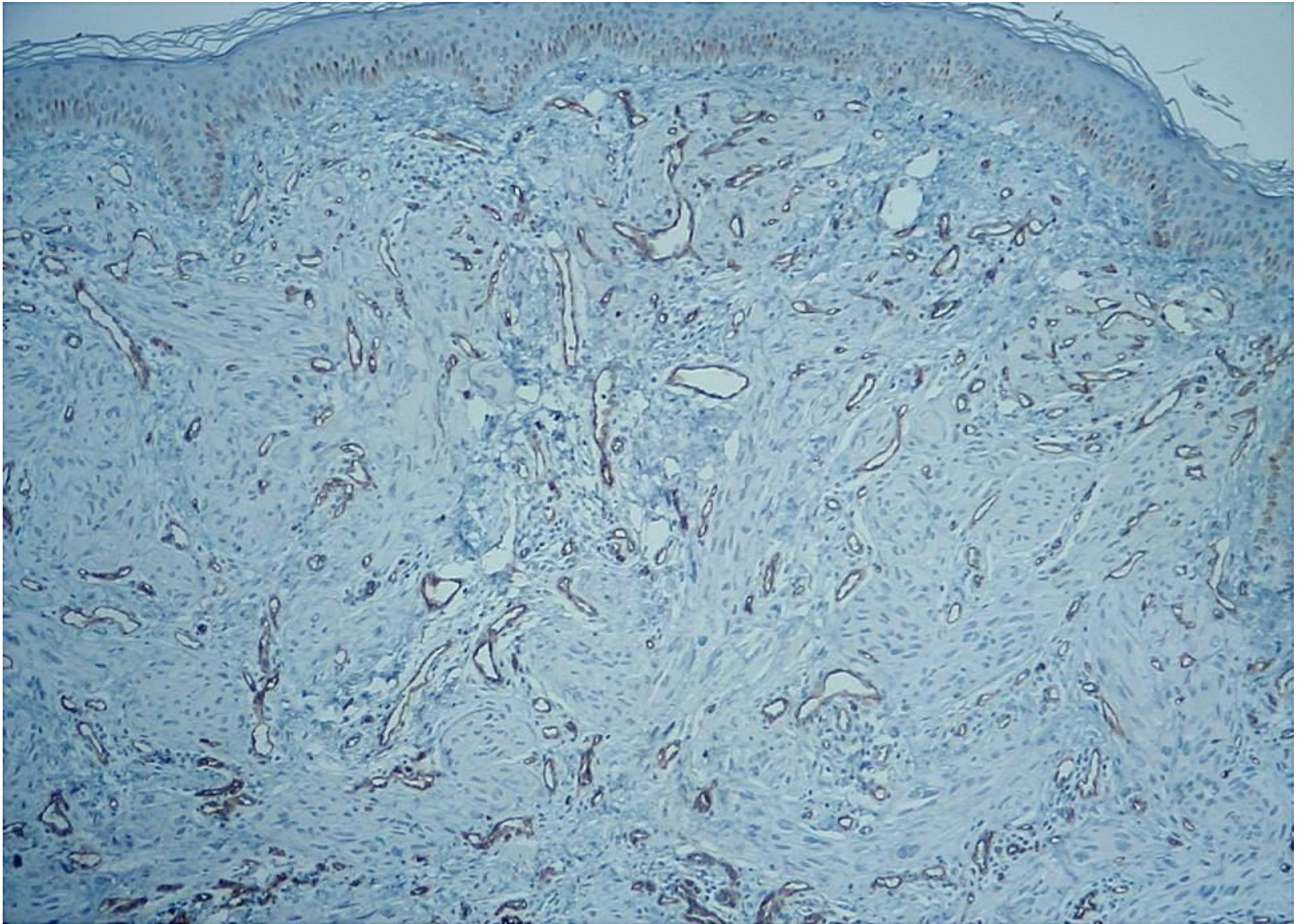
• S-100



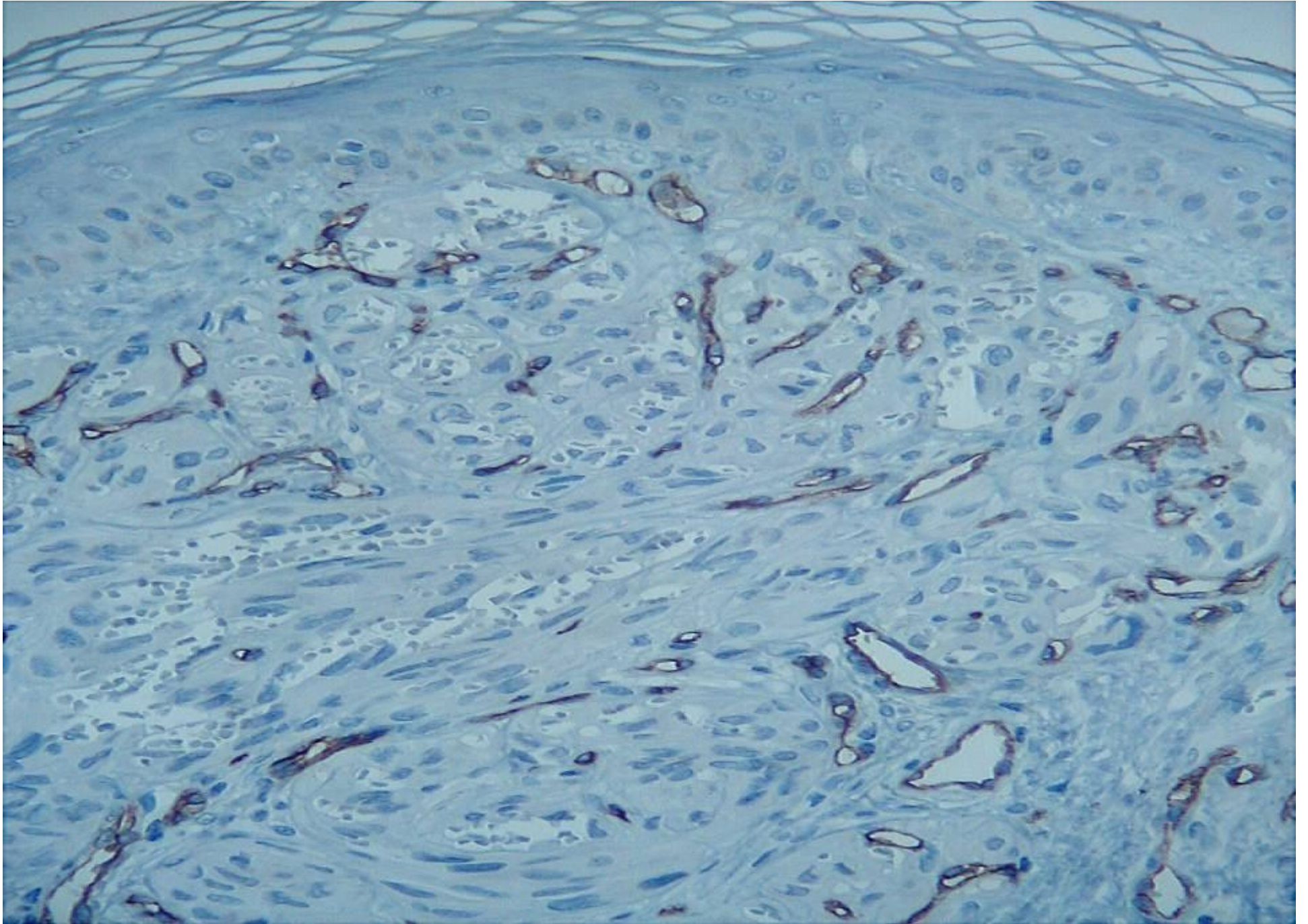
- Melan A



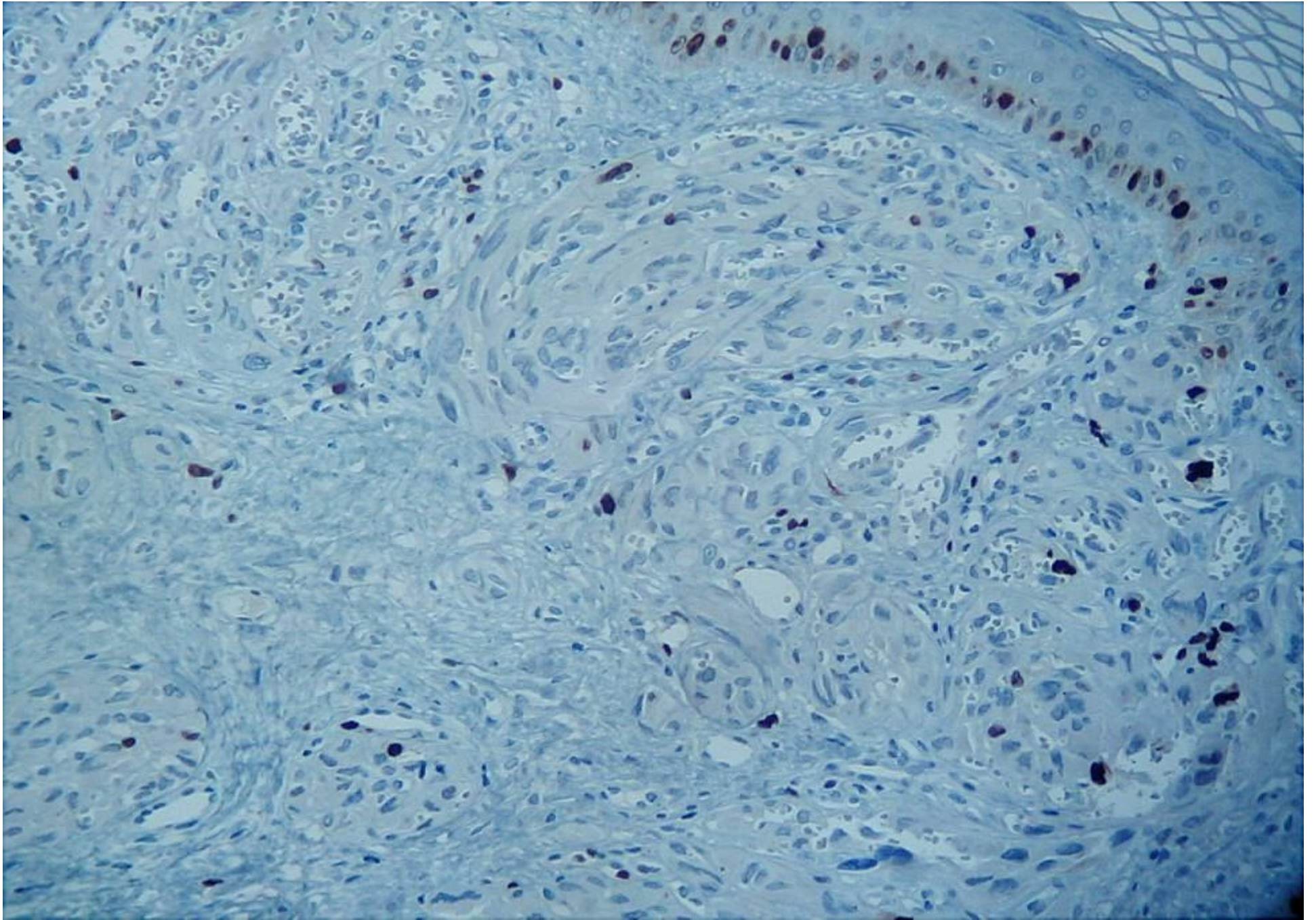
• HMB 45



- CD34



- CD31



- Ki 67

Qual é o seu diagnóstico?



CASO DO MÊS



Agradecemos sua participação