

# Caso do mês

## Janeiro/2016 - 2

Carlos Camilo Neto

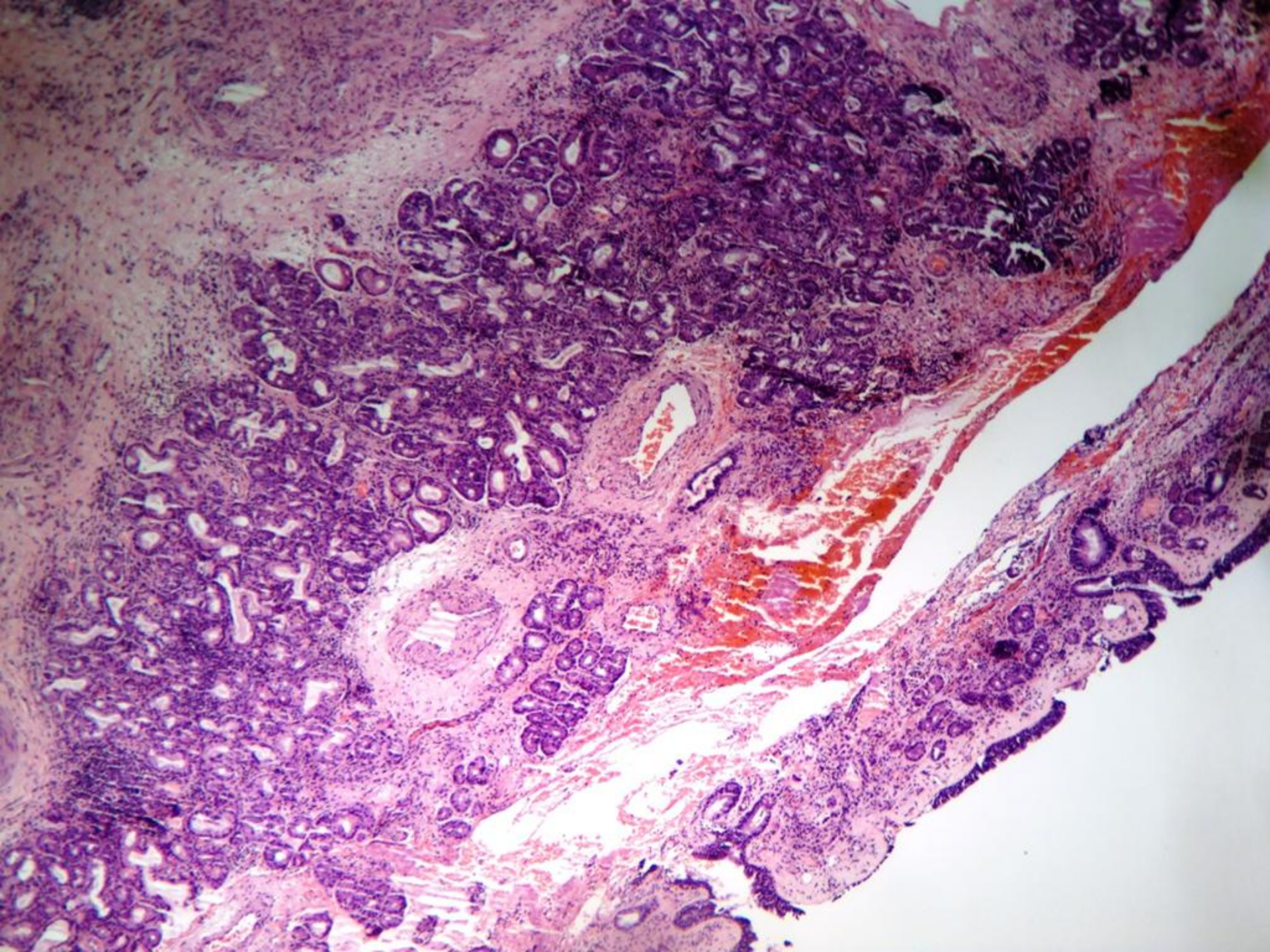
# História clínica

- . RAS, masculino, 34 anos
- . Paciente com história de trauma nasal
- . HD: Condroma?

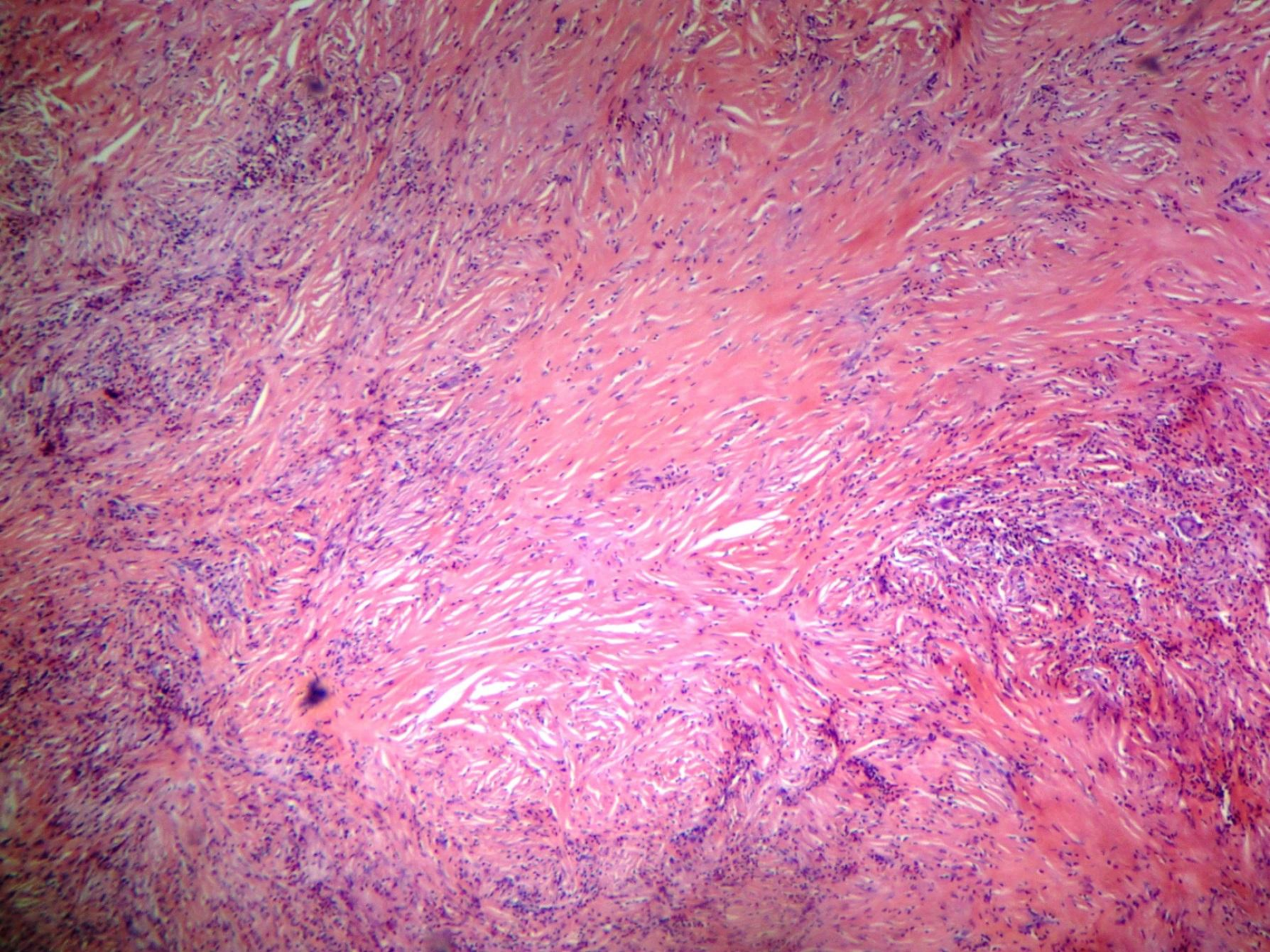
# História clínica

Não há informações de testes laboratoriais ou história patológica pregressa

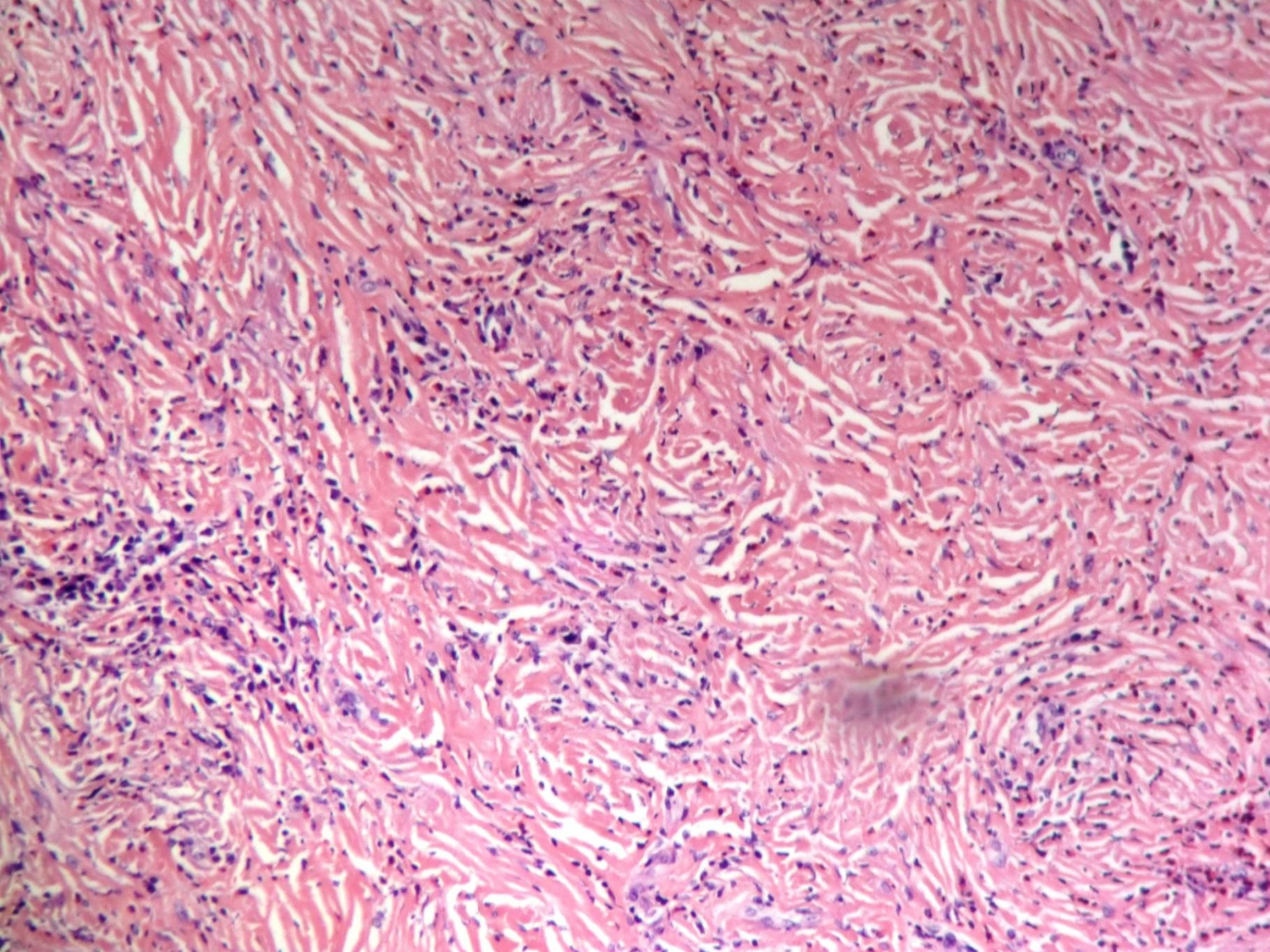




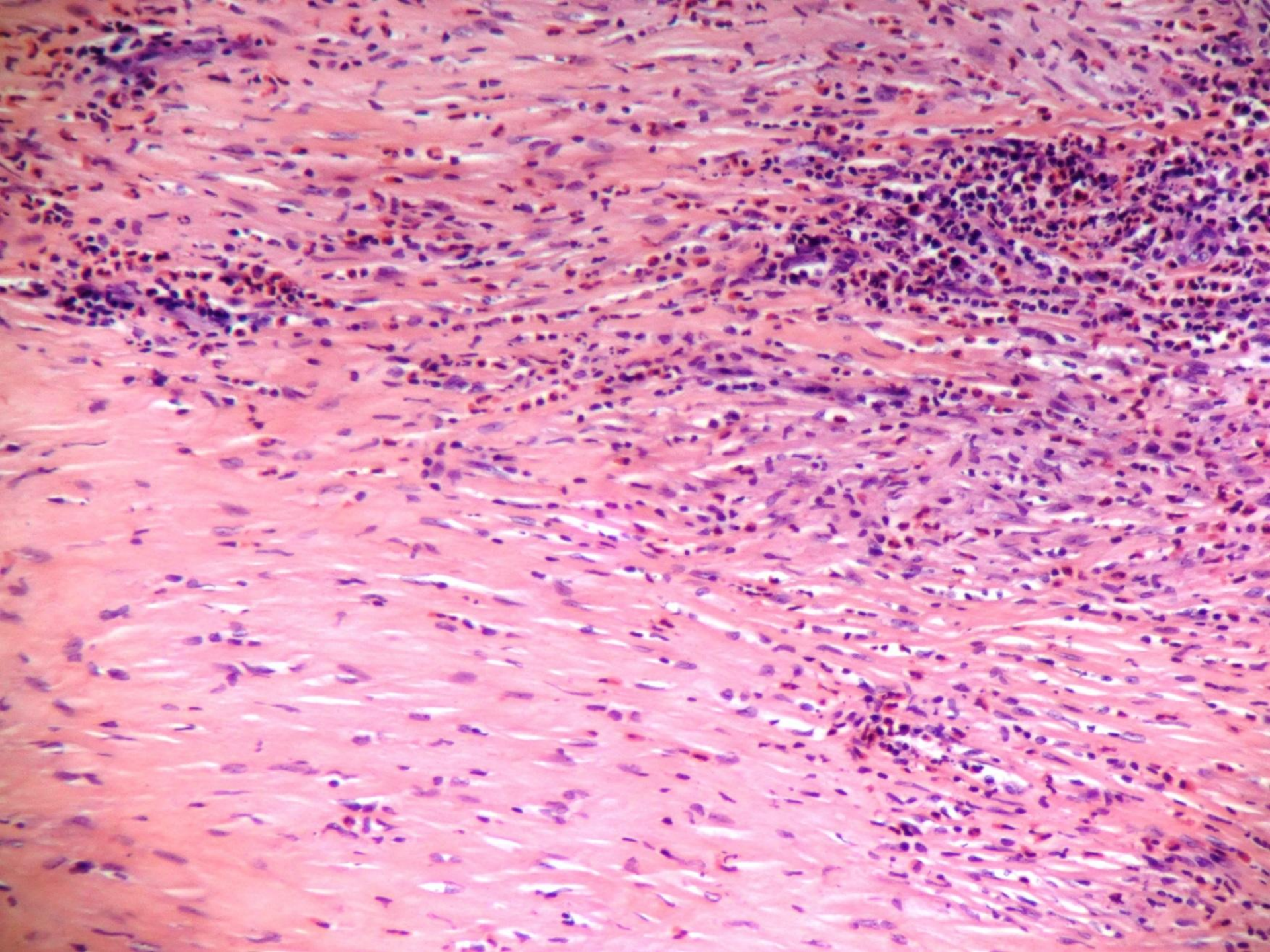




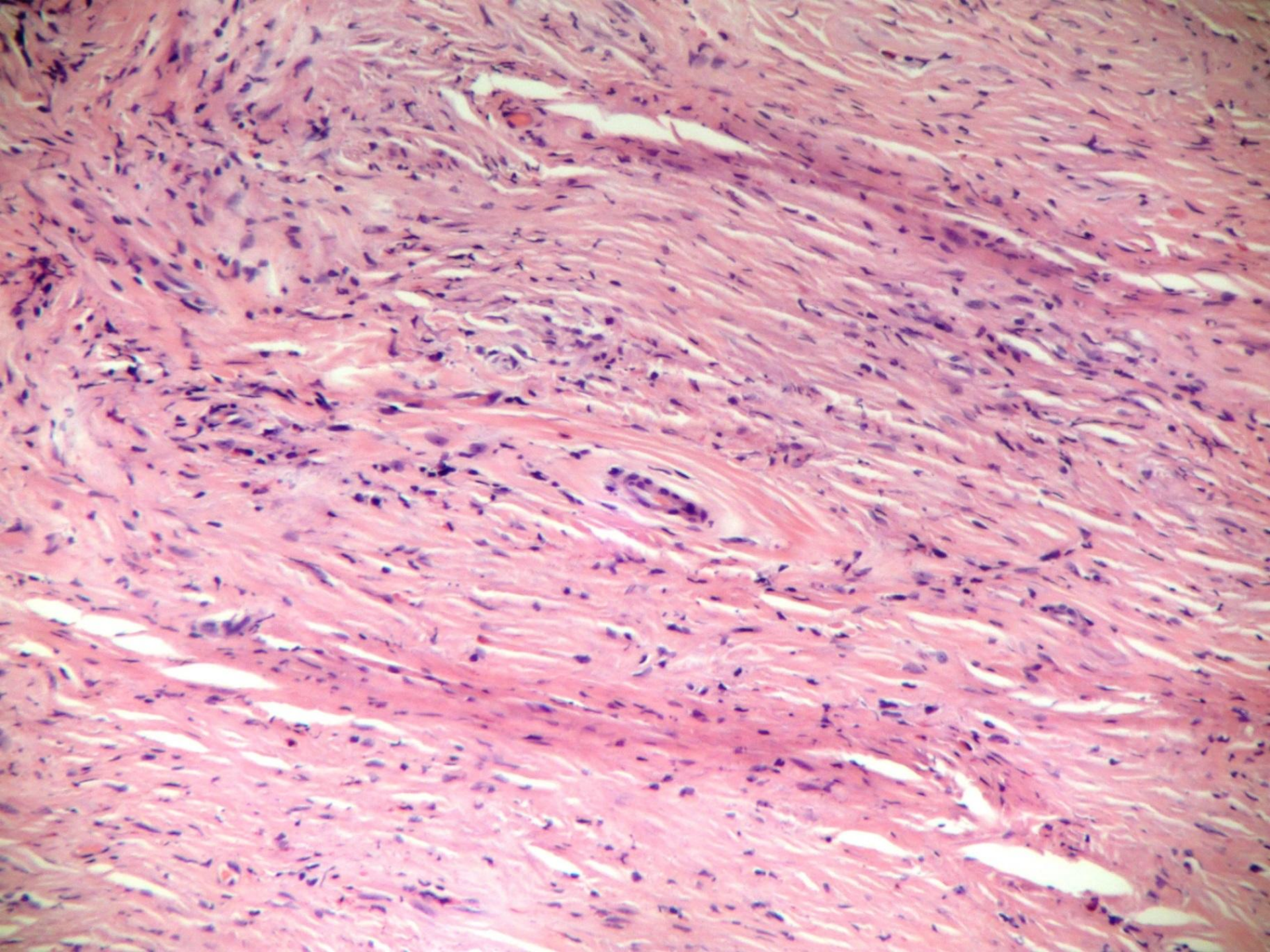




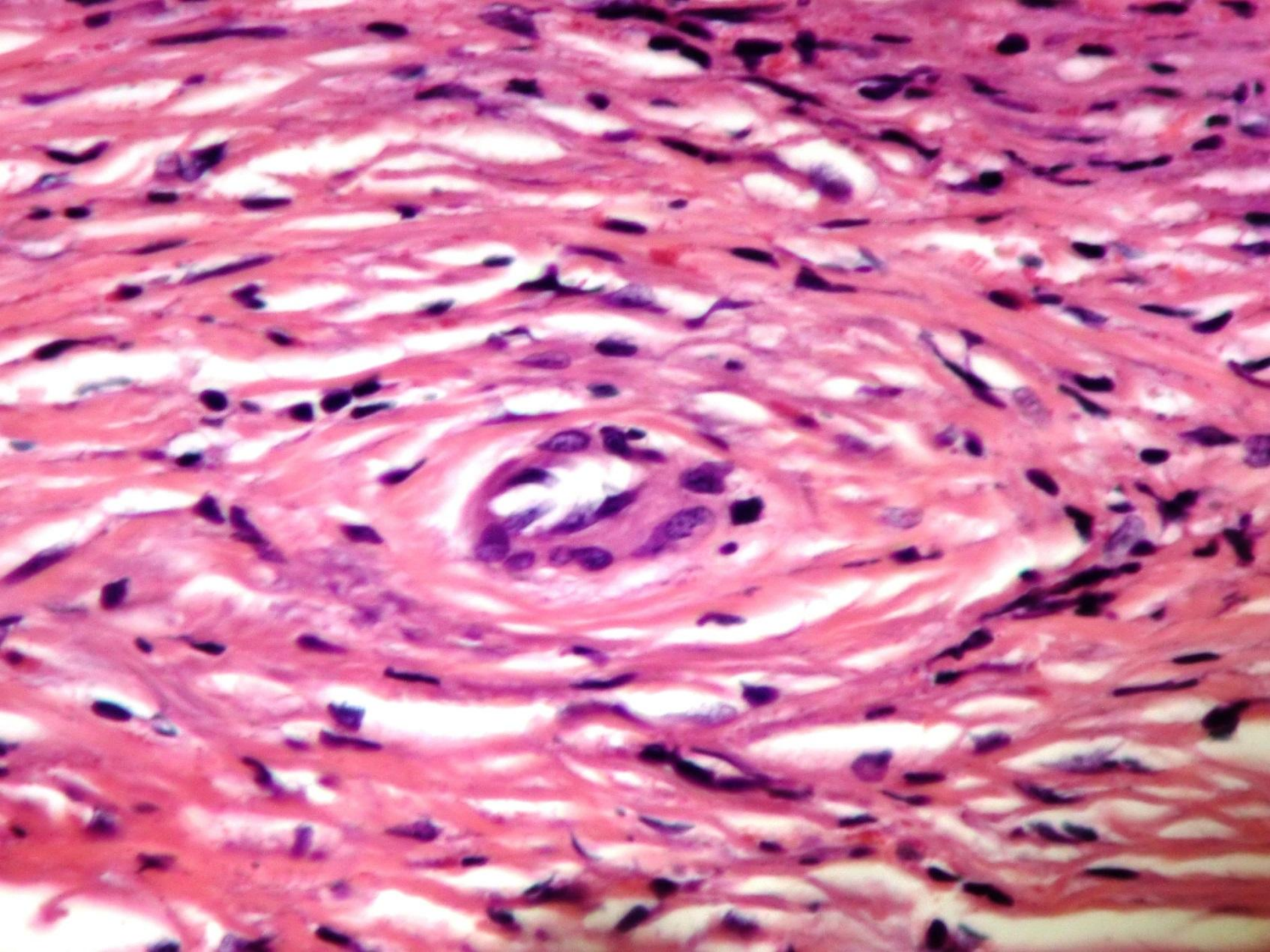




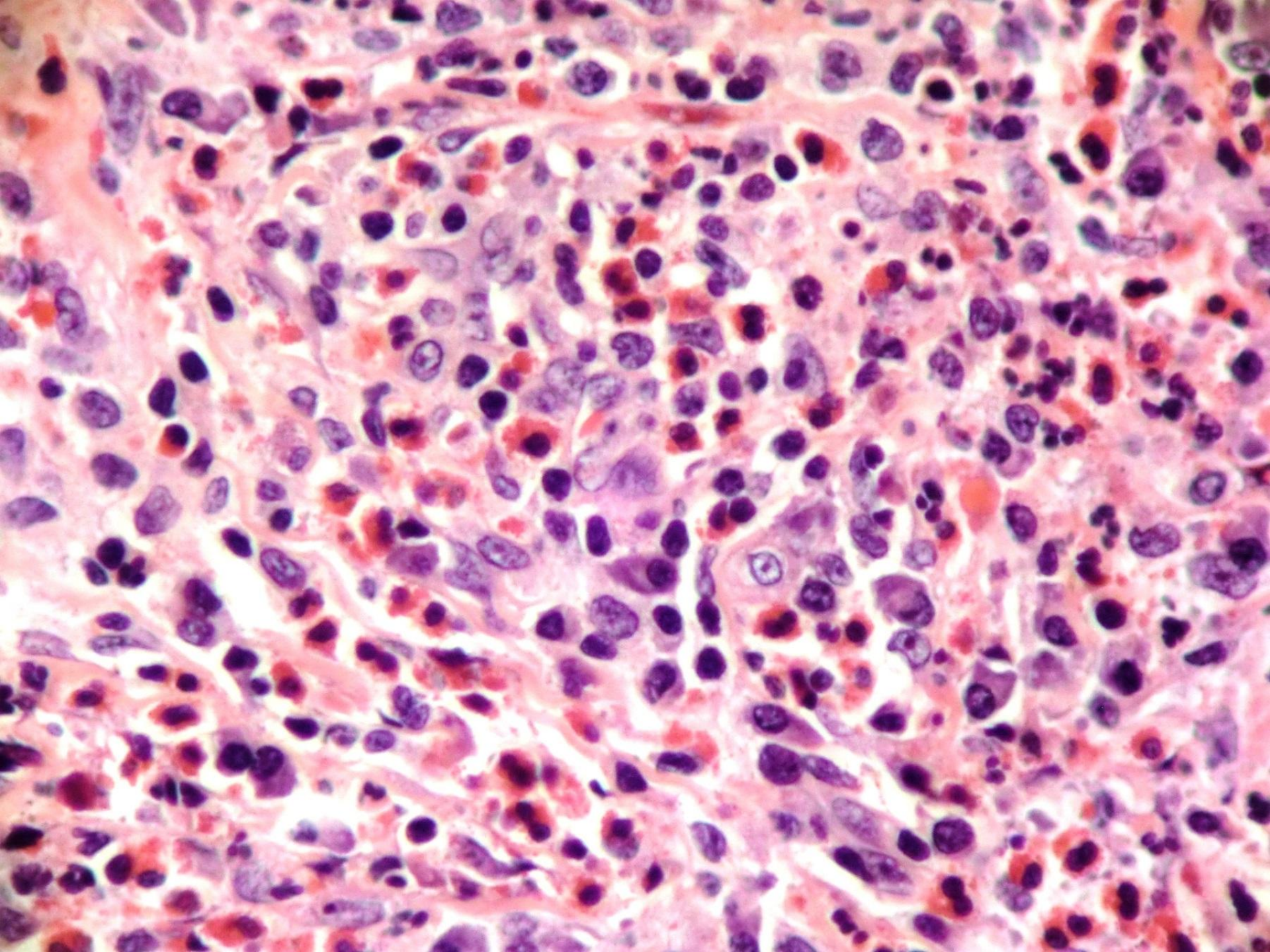














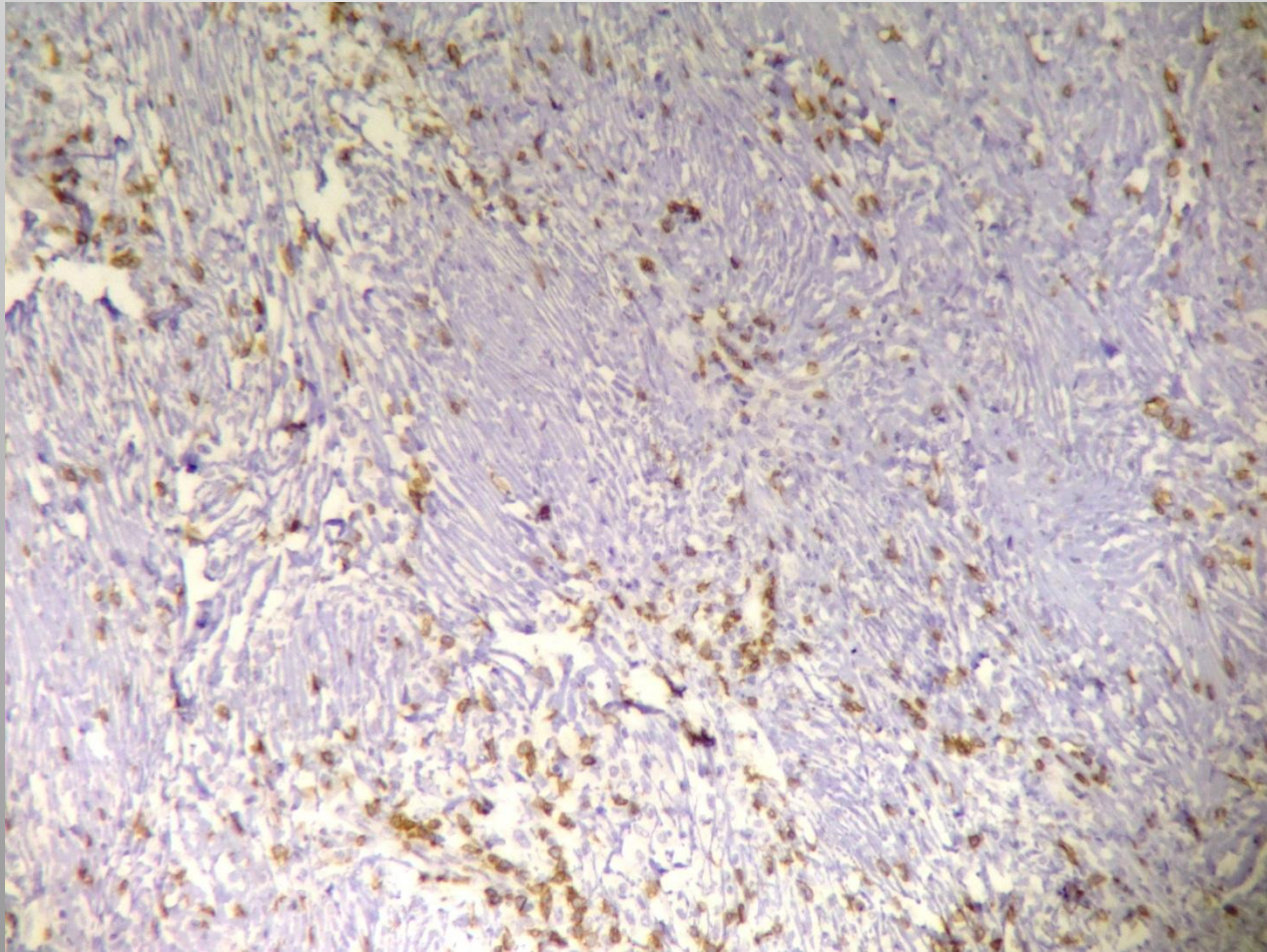
# Histologia

Ausência de:

- . Granulomas
- . Vasculite
- . Necrose

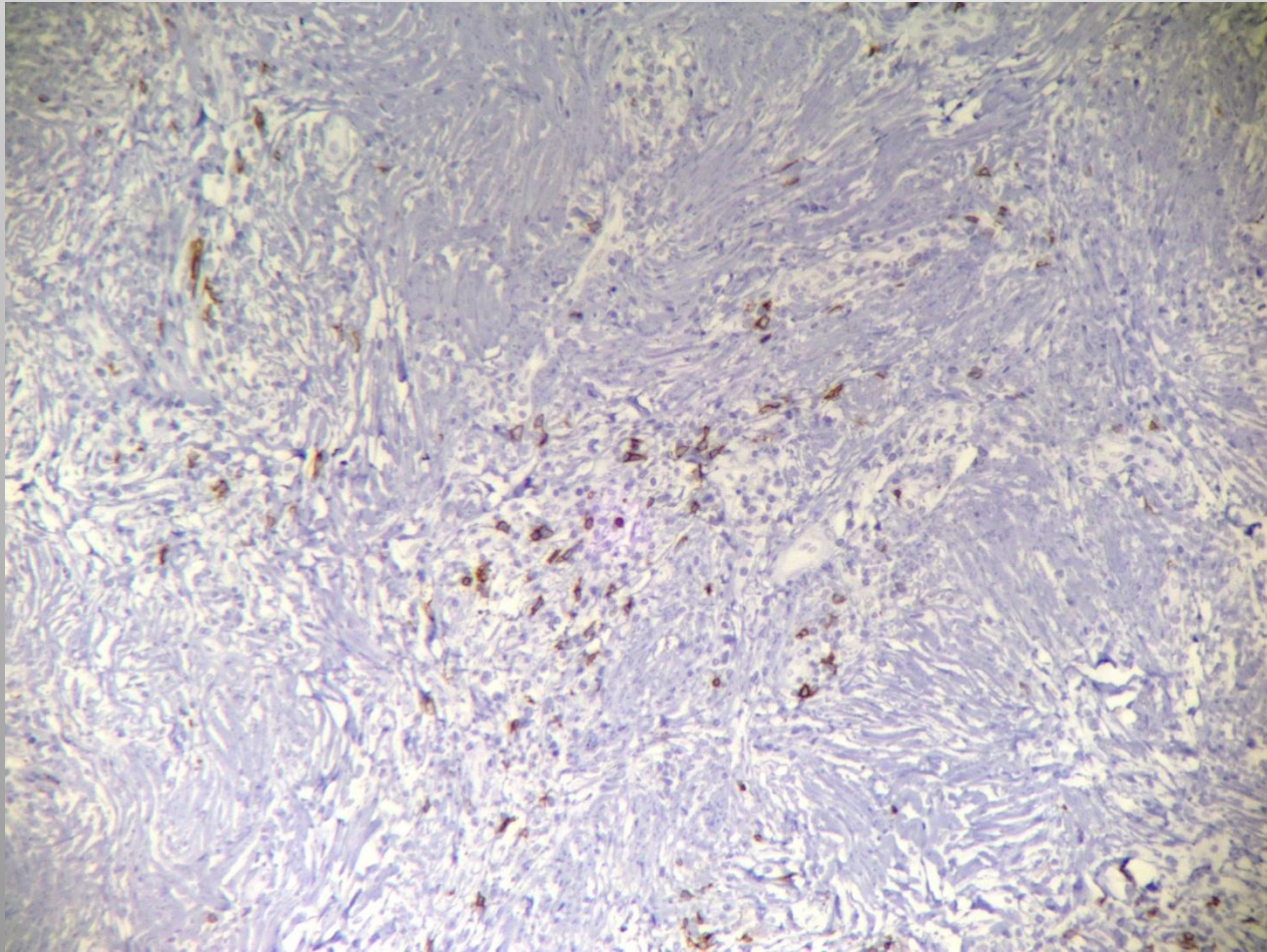


# CD3



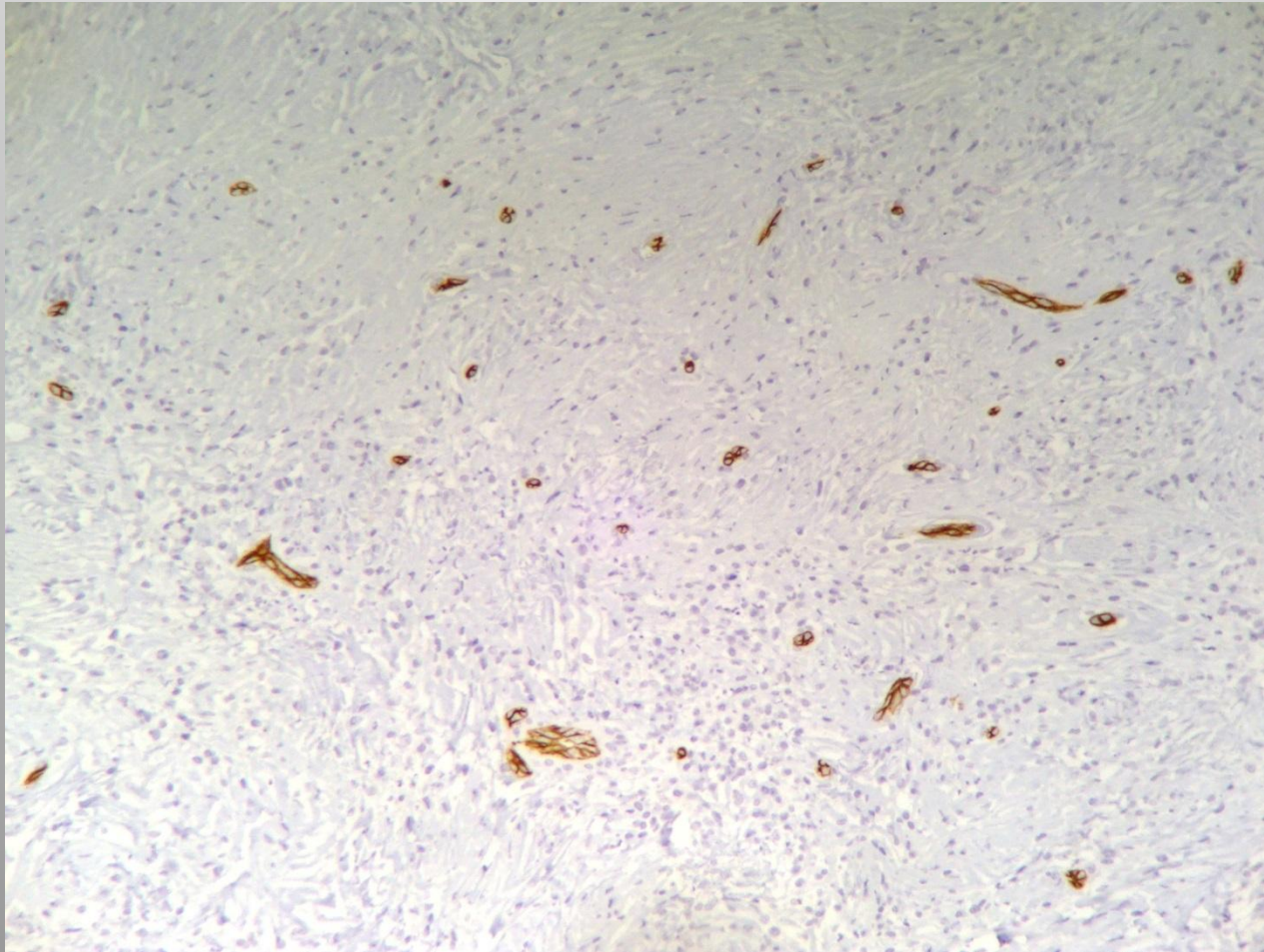


# CD20



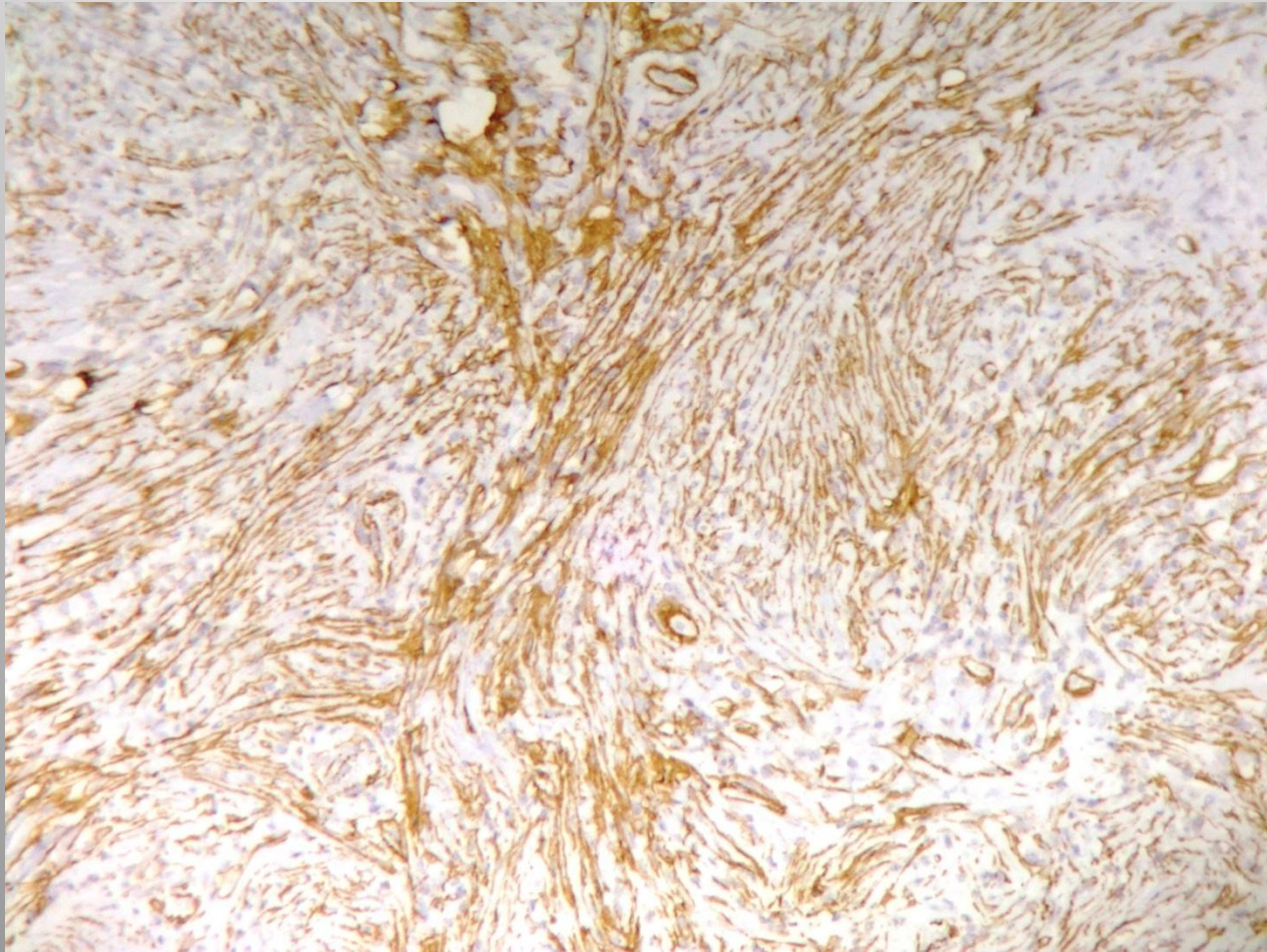


# CD34



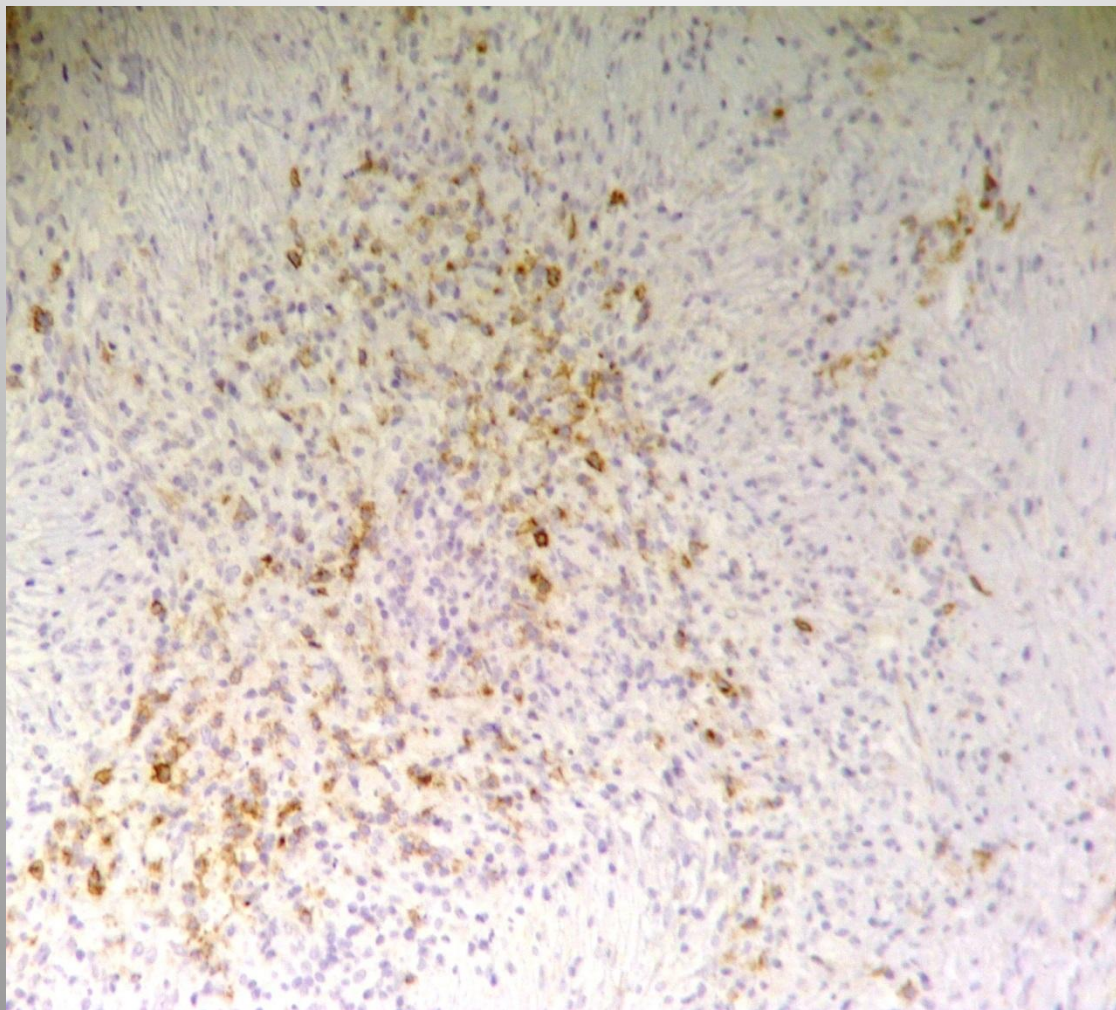


# AML



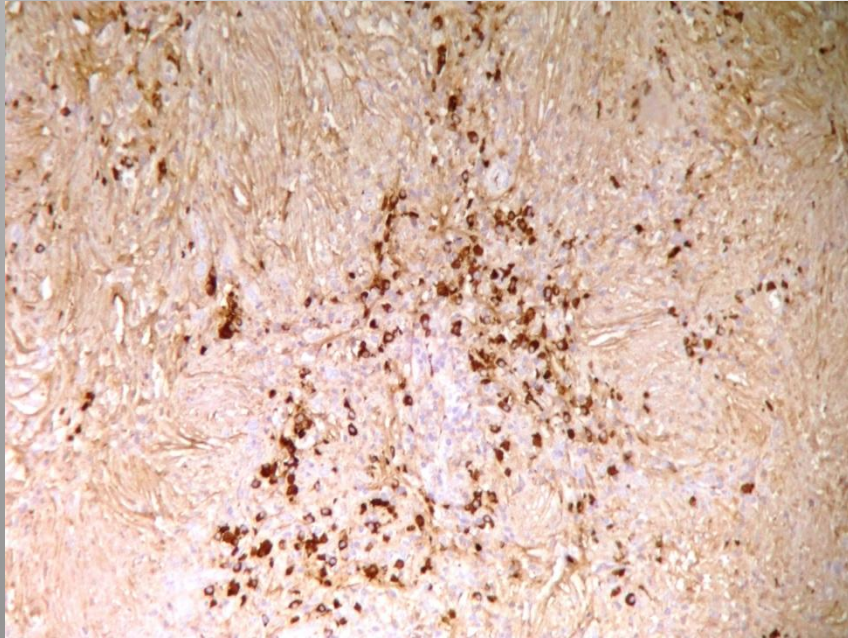


# CD 138

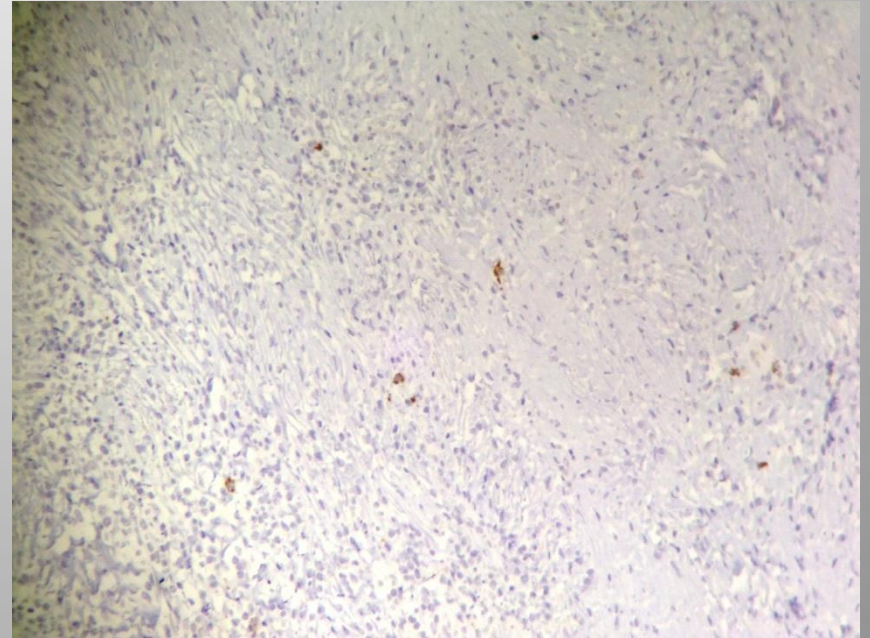




IgG



IgG4





# Anticorpos pesquisados

- . CD30 - negativo
- . Desmina - negativo
- . EBV - negativo
- . EMA - negativo
- . S100 - negativo
- . AE1/AE3 – negativo
- . CD15 – positivo nos granulócitos
- . Ki-67 – baixo índice proliferativo



Com base nestes  
aspectos, qual o  
diagnóstico?